

TOUKKA

Copyright © Moomin Language School. All rights reserved.



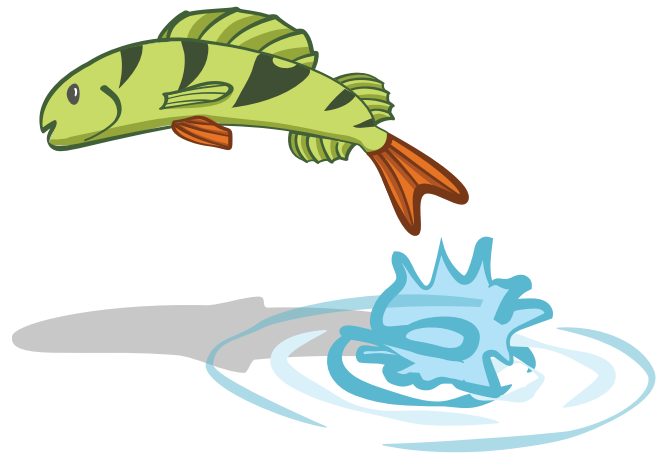
PERHONEN

Copyright © Moomin Language School. All rights reserved.



MEHILÄINEN

Copyright © Moomin Language School. All rights reserved.



KALA

Copyright © Moomin Language School. All rights reserved.



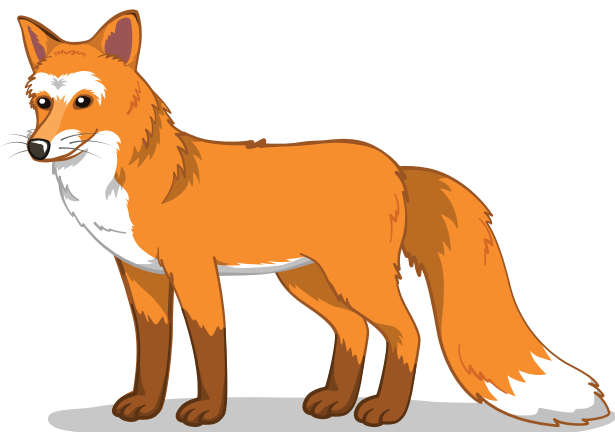
SAMMAKKO

Copyright © Moomin Language School. All rights reserved.



SIILI

Copyright © Moomin Language School. All rights reserved.



KETTU

Copyright © Moomin Language School. All rights reserved.



ORAVA

Copyright © Moomin Language School. All rights reserved.



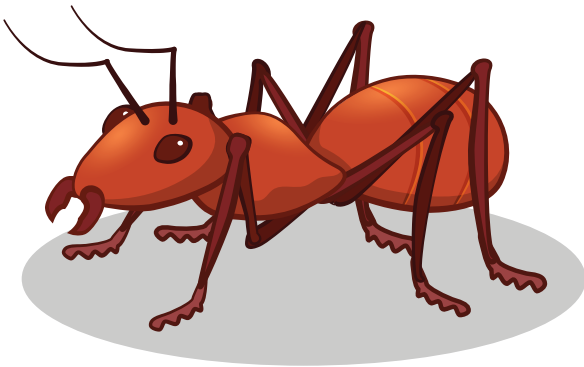
PÖLLÖ

Copyright © Moomin Language School. All rights reserved.



MATO

Copyright © Moomin Language School. All rights reserved.



MUURAHAINEN

Copyright © Moomin Language School. All rights reserved.



LEPPÄKERTTU

Copyright © Moomin Language School. All rights reserved.