

# Miami Plant Inspection Station

## A Time to Remember



### **Mission Statement**

To safeguard American agriculture by regulating the entry of propagative materials such as; live plants, plant propagules, and seeds to prevent the introduction or establishment of exotic pests and diseases. To expeditiously provide the highest level of taxonomic identification services, professionally monitor treatments and conduct phytosanitary certifications to facilitate safe global trade.

## Miami Plant Inspection Station Core Functions

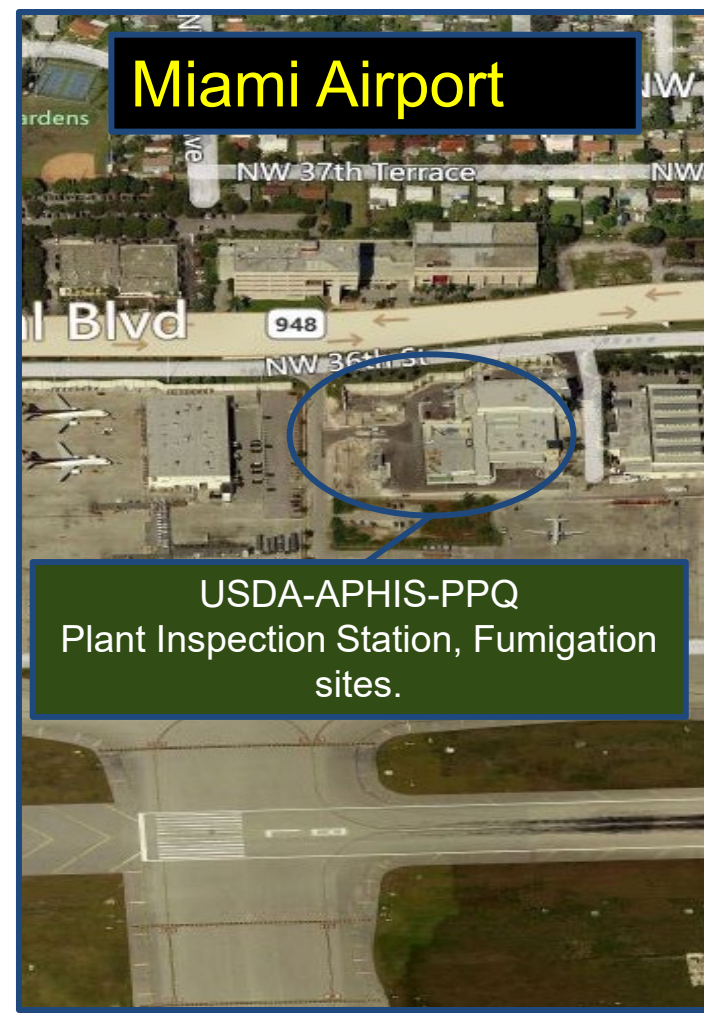
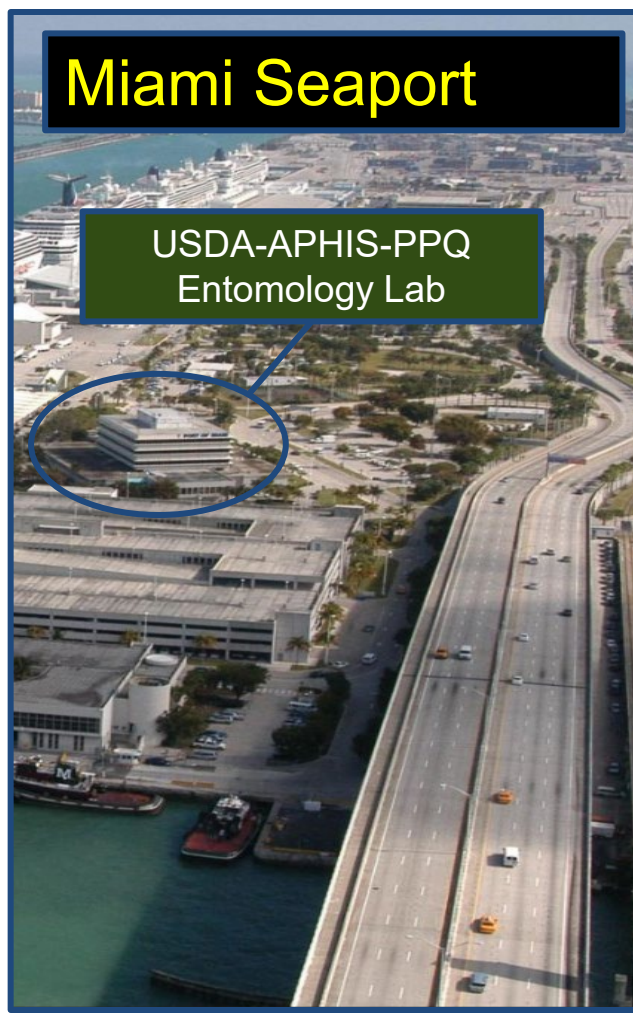
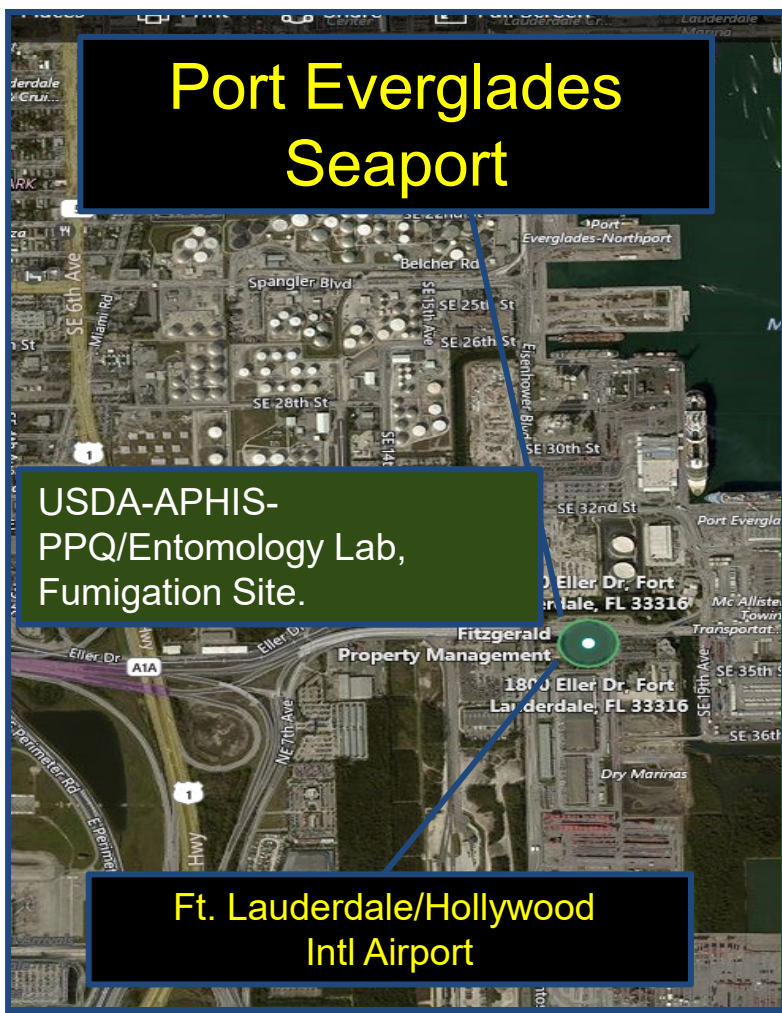


- Regulate Propagative Material/Seeds
- Provide taxonomic services (pest identification)
- Inspect and Issue Phytosanitary Certificates for export
- Supervise reconditioning and restacking
- Monitor Methyl Bromide (MB) treatments
- Validate Cites (Convention on International Trade and Endangered Species) documents for export
- Smuggling Introduction and Trade Compliance
- Compliance (Regulated Garbage and Agreements)
- Stakeholder Outreach

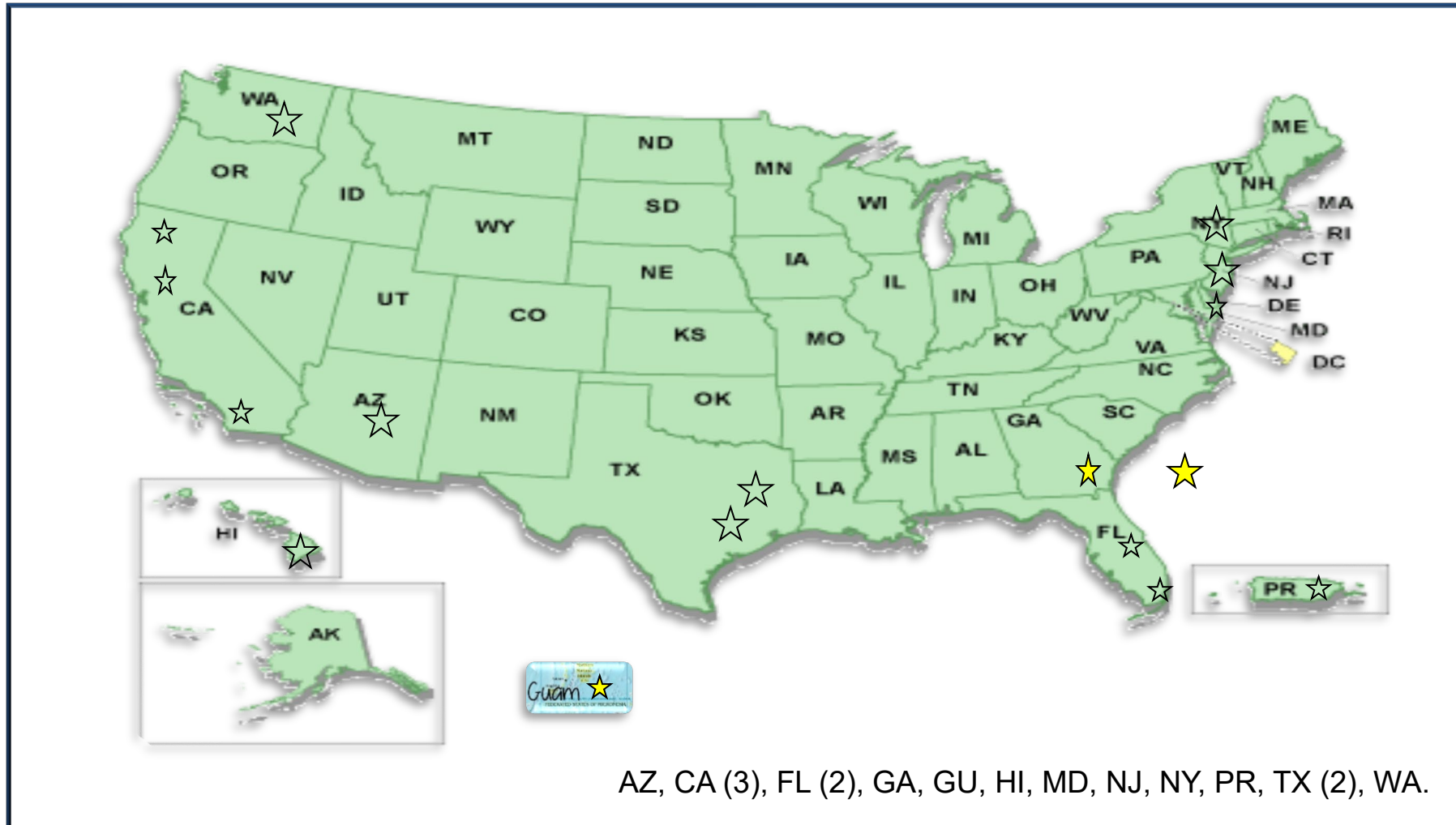




# South Florida Area



# Plant Inspection Stations





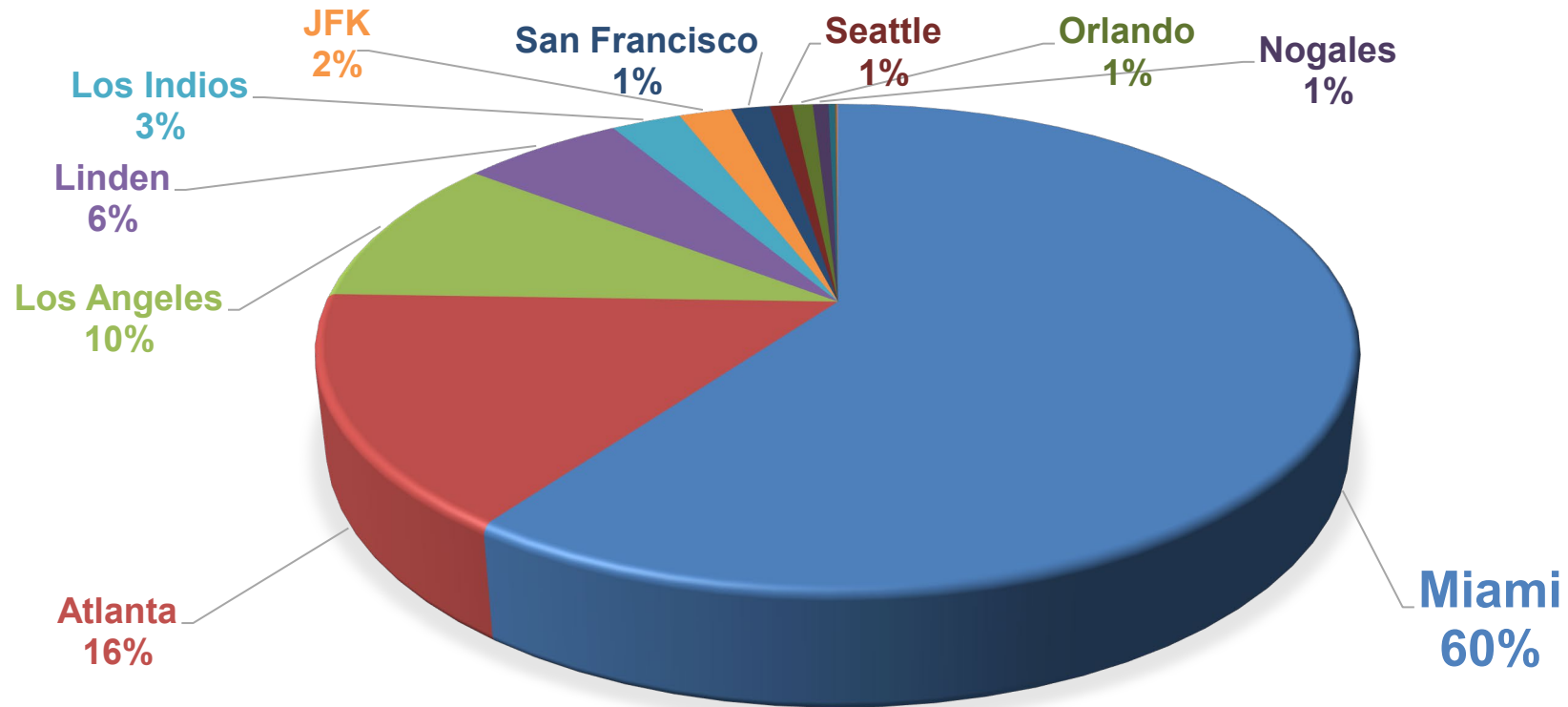
# Total Plant Units Processed Per PIS FY 2020

**Miami**  
**60%**



Miami	1,024,162,686
Atlanta	265,132,112
Los Angeles	169,507,744
Linden	102,719,999
Los Indios	44,447,484
JFK	33,405,161
San Francisco	24,674,445
Seattle	14,177,033
Orlando	13,042,819
Nogales	9,995,818
Houston	4,289,014
Honolulu	904,735
Carolina	434,223
San Diego	316,230
Beltsville	44,012
Guam	300

## Percentage Of Live Plants Processed Per PIS FY 2020

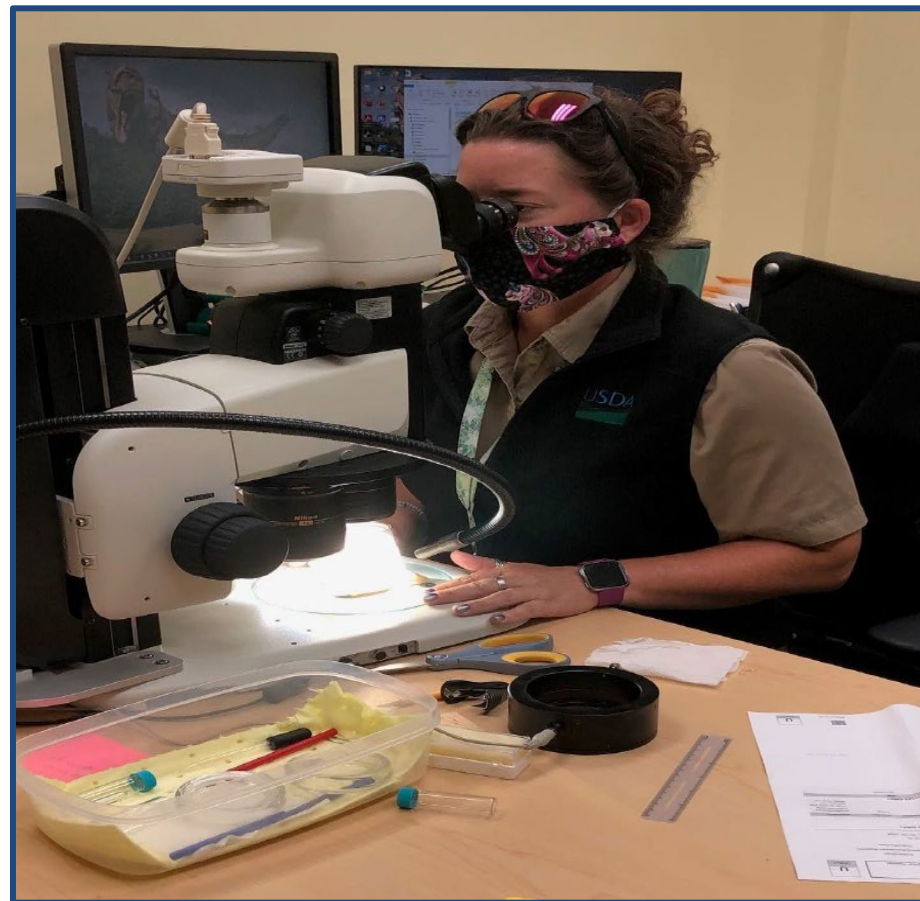


## Pest Identification

Miami Area Identifiers are experienced taxonomic generalists in one of five disciplines: entomology, botany, plant pathology, malacology, nematology and CITES plant material. We identify organisms intercepted in our port and other ports in our area of coverage.

Number of specialists:

- Ft. Lauderdale: 2
- MIS: 10
- Maritime: 1





## National Pest Interceptions Processed Per PIS FY 2020

**17,545**



Miami	17,545
JFK	16,655
Houston	8,480
Seattle	7,619
Los Angeles	6,481
Carolina	6,291
Linden	5,441
Honolulu	4,177
San Diego	3,410
San Francisco	3,011
Los Indios	2,797
Atlanta	2,745
Nogales	2,585
Orlando	7,84
Guam	10
Beltsville	1



## Export Certification FY 2020



The Phytosanitary Certification of US agricultural products and by-products is a very significant part of our Mission.

In FY 2020, a total of **7,987** Phytosanitary Certificates were issued for the export of a variety of commodities.

# Miami Treatments

## Fumigation Facilities:

Miami International Airport/Seaport is serviced by three fumigation companies with 24/7 operational capability. The fumigation companies conduct the operation through agreements with the Miami Dade Aviation Department and with on-site monitoring by the US Department of Agriculture (USDA).

## Fumigation Methods:

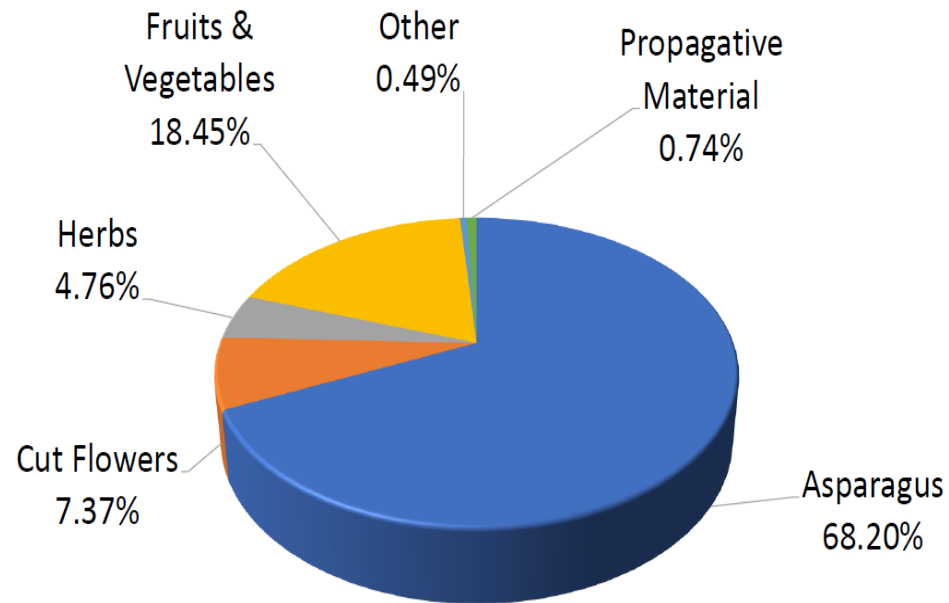
- Normal Atmospheric Pressure (NAP) and Containerized
- 4 fumigation chambers (360 pallets total), with a 95% emission free, recover system for the methyl bromide.





## Treatments Per Commodity Type FY 2020

**8,766  
Treatments**

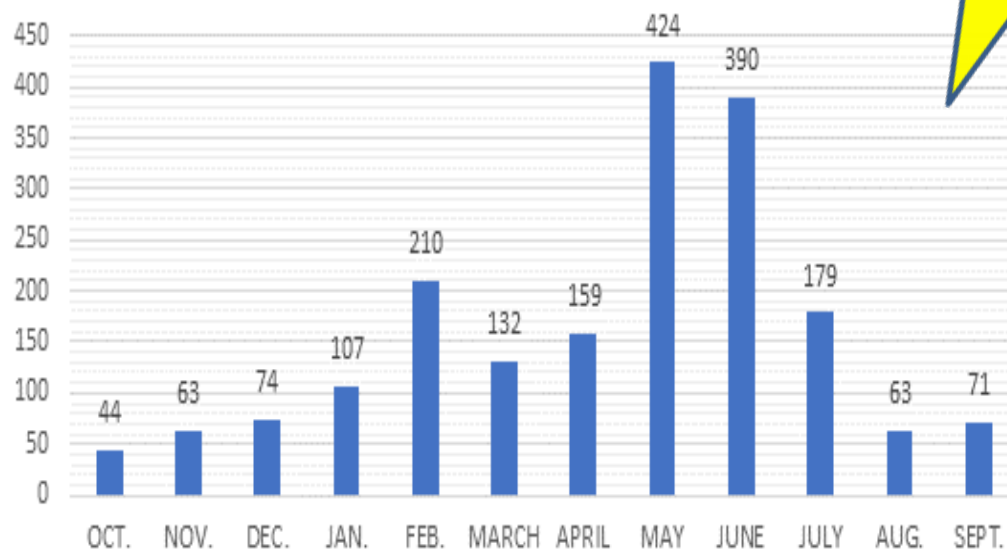


<u>Commodity</u>	<u>Total</u>
Asparagus	5,978
Fruits & Vegetables	1,617
Cut Flowers & Greenery	646
Herbs	417
Propagative Material	65
Others	43

## Convention on International Trade in Endangered Species of Wild Fauna and Flora (CITES)



FY2020  
Exported CITES Shipments



**1,916**



# Reconditioning and Restacking

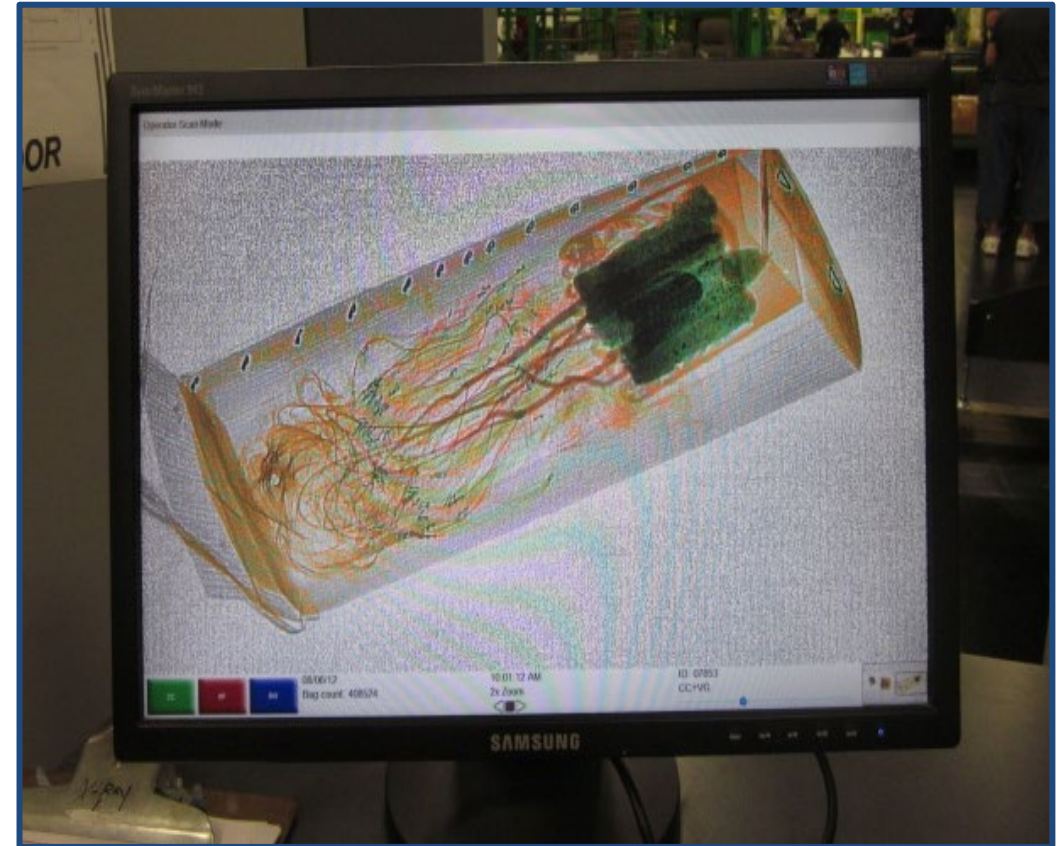


# Smuggling Interdiction & Trade Compliance Southern Florida





# International Mail Facility





# Compliance



## WOOD PACKING MATERIAL





# Stakeholder Outreach



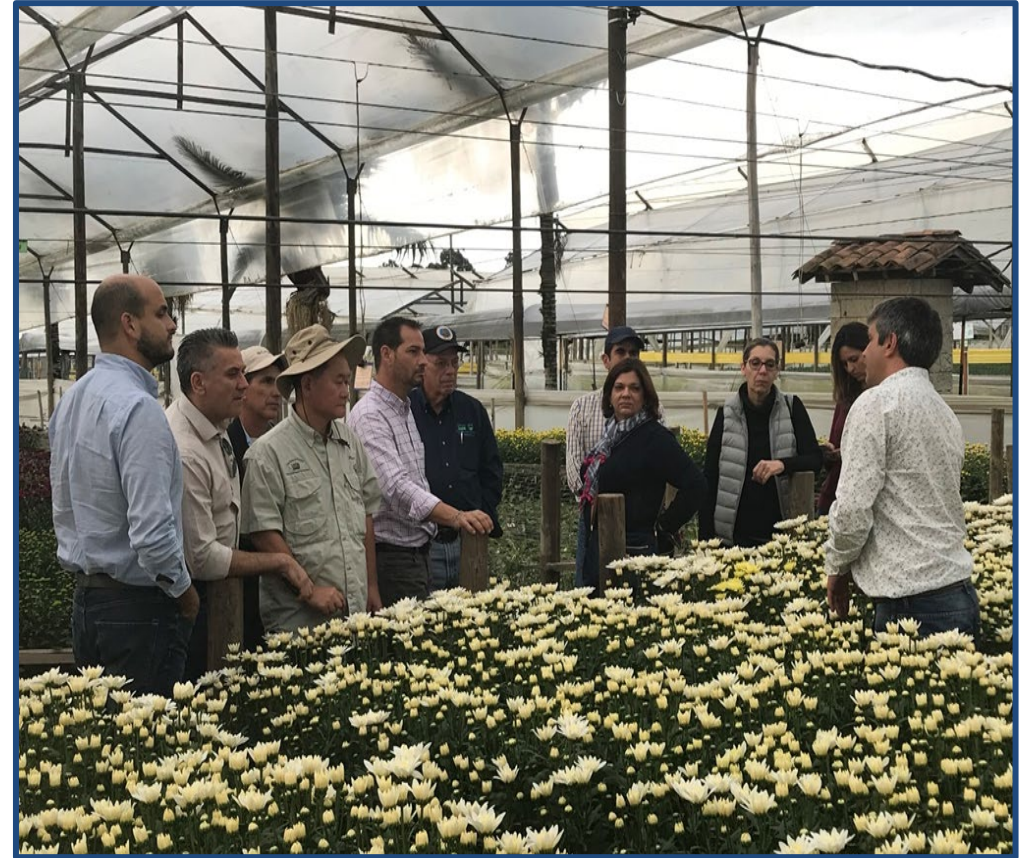


# Stakeholder Outreach





# Stakeholder Outreach





# Miami Plant Inspection Station FY 2021 October to March



## Live Plants Processed Per PIS FY 2021 – October to March

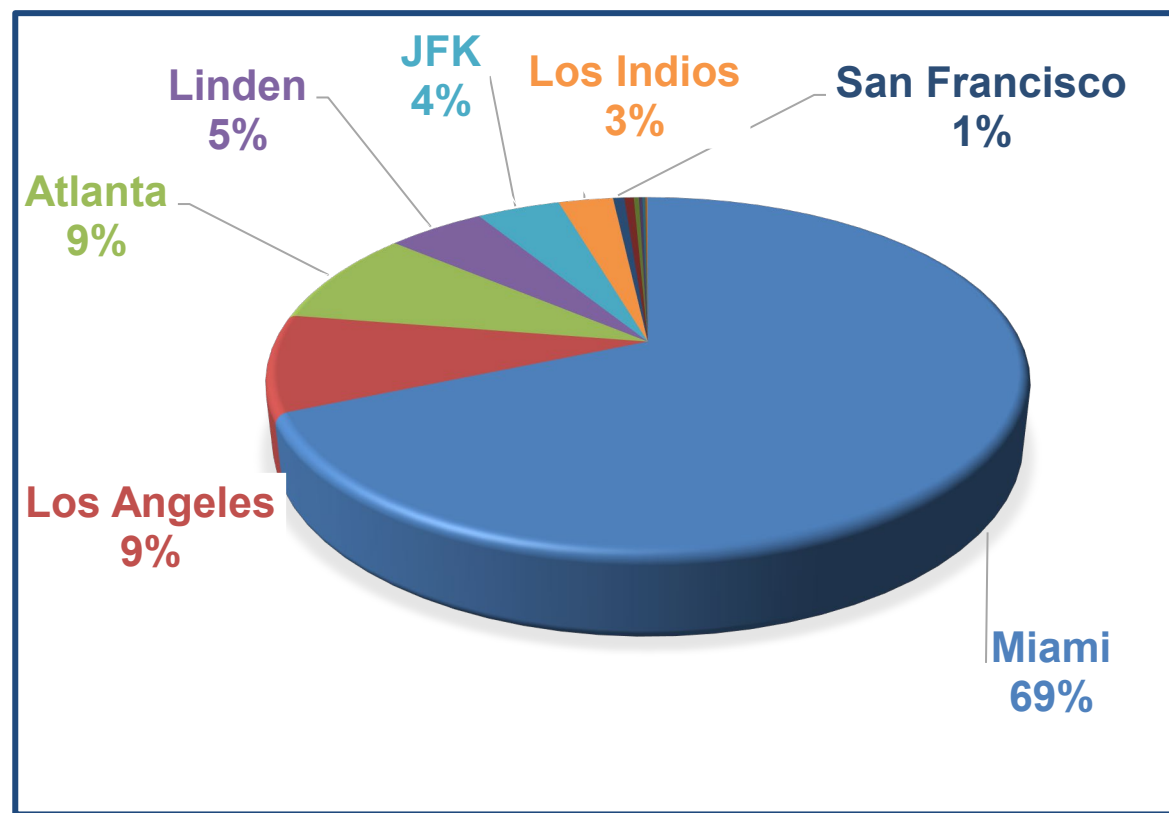
**Miami**  
**69%**



<b>Miami</b>	<b>987,993,371</b>
Los Angeles	128,057,402
Atlanta	124,699,482
Linden	72,080,521
JFK	61,425,114
Los Indios	40,267,378
San Francisco	8,251,134
Nogales	6,985,768
Seattle	3,766,567
Houston	2,587,681
Orlando	2,142,585
Carolina	1,323,515
Honolulu	451,330
San Diego	56,639
Guam	4,493
Beltsville	2,622



## Total Plant Units Processed Per PIS FY 2021 October to March





# National Pest Interceptions Processed Per PIS FY 2021 – October to March

**13,157**



Miami	<b>13,157</b>
JFK	10,369
Houston	7,776
San Francisco	4,738
Los Angeles	4,712
Seattle	4,585
Linden	4,504
Carolina	3,675
Honolulu	3,234
Los Indios	2,671
Atlanta	1,866
San Diego	1,840
Nogales	1,821
Orlando	662
Guam	5
Beltsville	2

# Export Certification

FY 2021 – October to March

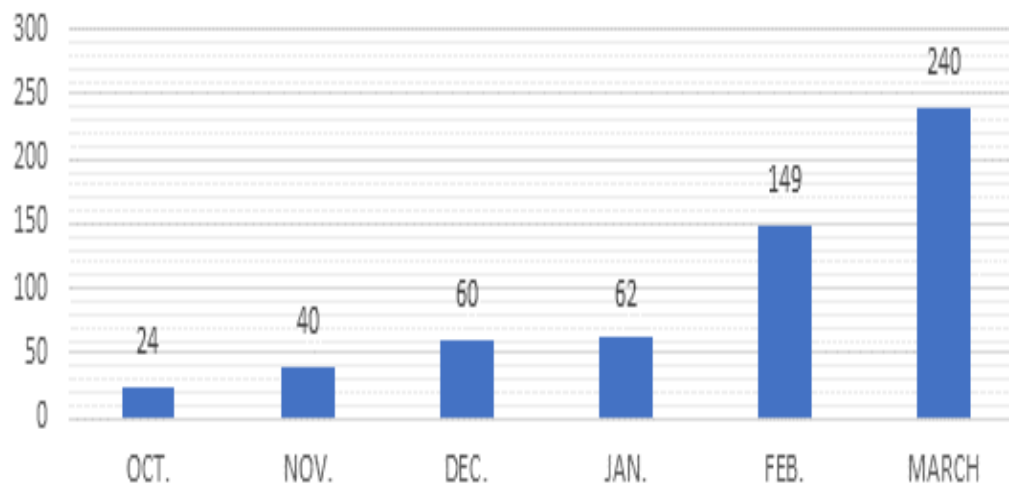


In FY 2021 - October to March, a total of **4,130** Phytosanitary Certificates were issued for the export of a variety of commodities.

## Convention on International Trade in Endangered Species of Wild Fauna and Flora (CITES)



FY2021  
Exported CITES Shipments



575



## Treatments FY 2021 to Present



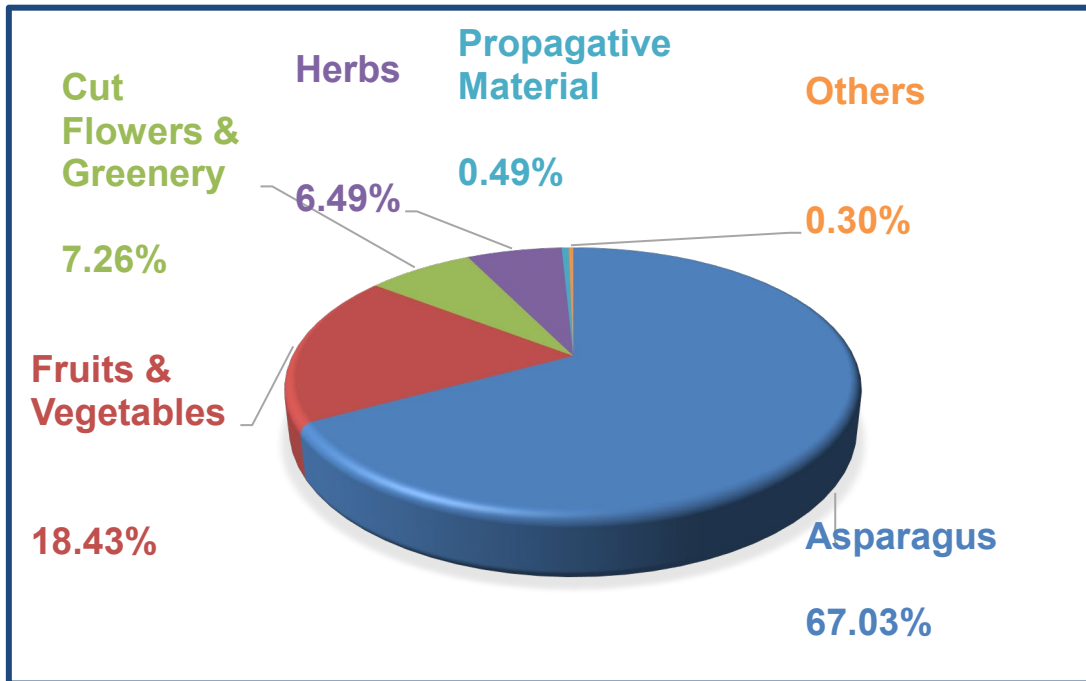
Mitigation of plant pest often requires the application of chemical treatments.

In FY 2021, a total of **4,286** fumigations with Methyl Bromide (MB) were conducted to treat a variety of agricultural products and by-products.



## Treatments Per Commodity Type FY 2021

**4,286  
Treatments**

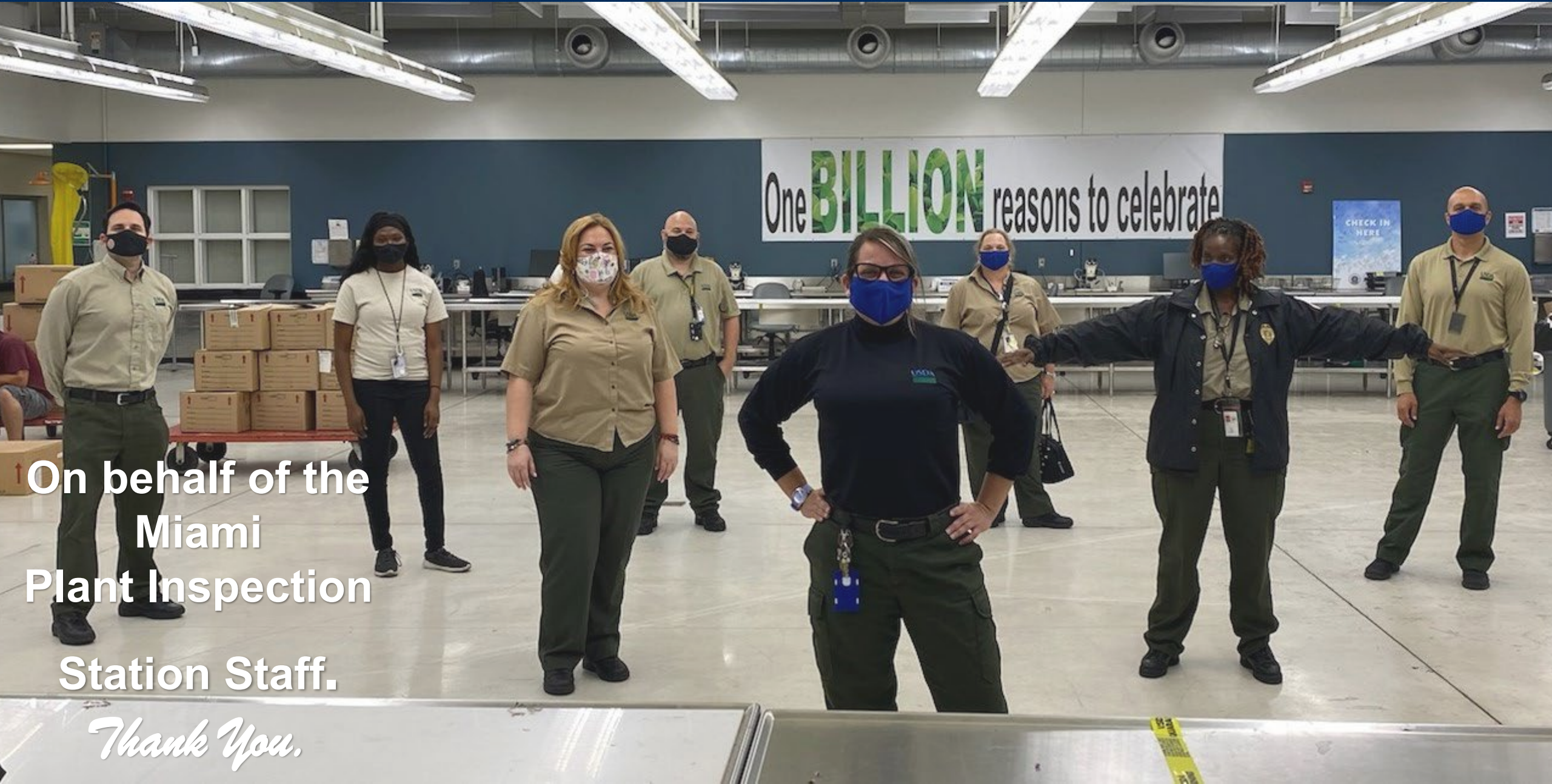


<u>Commodity</u>	<u>Total</u>
Asparagus	2,873
Fruits & Vegetables	790
Cut Flowers & Greenery	311
Herbs	278
Propagative Material	21
Others	13





United States Department of Agriculture



On behalf of the  
Miami  
Plant Inspection  
Station Staff.

*Thank You.*