



Caution checklist for installation

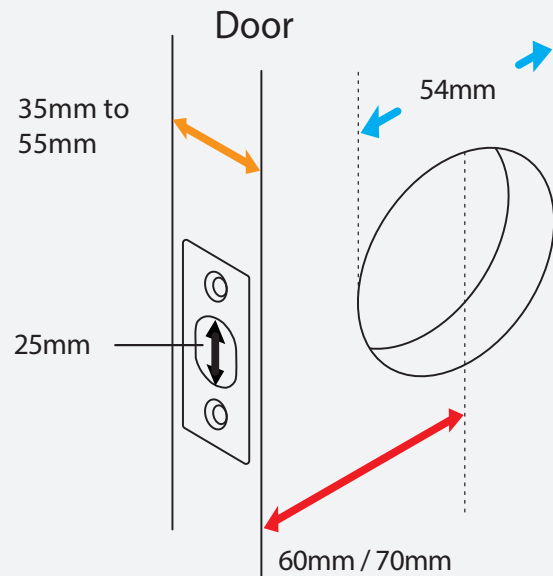
CAUTION

PLEASE READ THIS MANUAL or
WATCH THE VIDEO GUIDE
BEFORE STARTING INSTALLATION

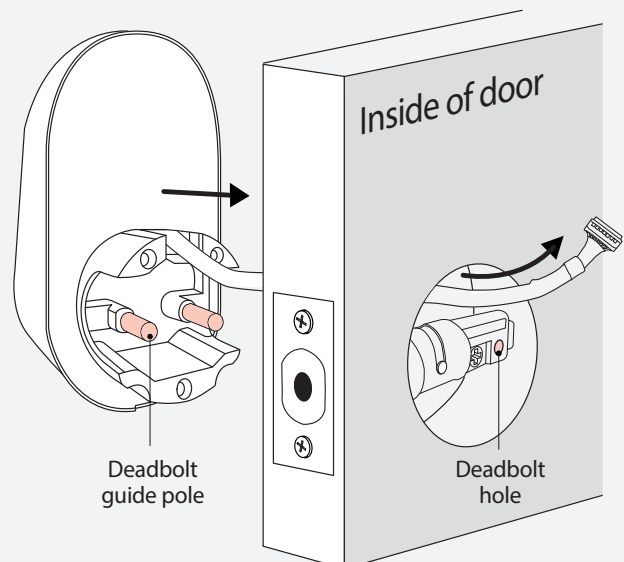
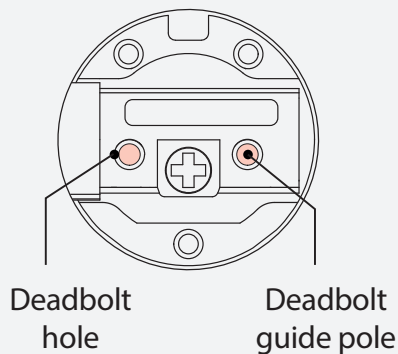
1 The deadbolt does not extend or retract all the way :

- a. Ensure that the bore hole/face bore is 54mm and the back set is either 60mm or 70mm (depending on your door) for the outer body to fit correctly and align with the deadbolt.

- ☐ Bore hole/ Face bore (54mm)
- ☐ Back Set (60 / 70mm)
- ☐ Door Thickness (35-55mm)

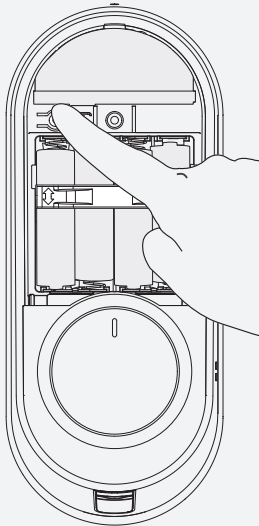


- b. Ensure that the outer body pins are correctly aligned through the deadbolt.

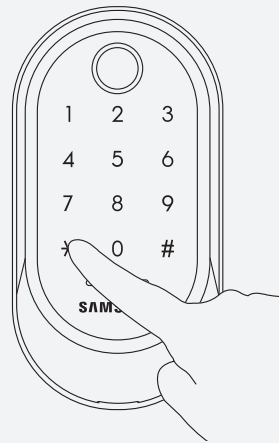


2 Once powered on for the first time, the automatic direction detection sequence does not start OR the bolt thumb turn does not move, and a jamming noise is heard :

- Please perform a factory reset (in this specific case, please uninstall the inner body ensuring that the outer body cable is still connected so that the screen can be accessed)
- Proceed to reset the lock as seen below:



With the door unlocked and open, press the [REG] button for 5 seconds.

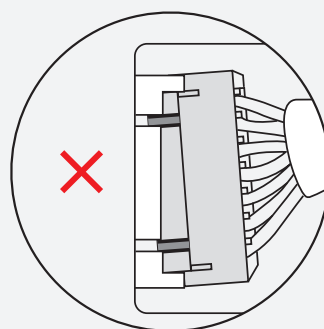
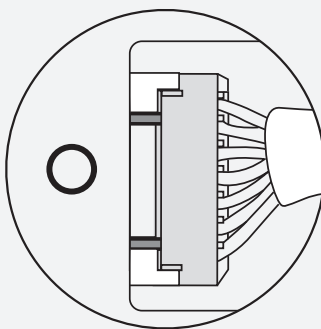


Enter "4560852580" followed by [*] button.

- Once completed please remove a battery for 5 seconds, then reinsert.
- The lock will now perform the automatic direction detection sequence.

3 Once installed, if the screen does not light up or respond to touch :

- Uninstall the inner body
- Check the cable connection, ensure that the cable is correctly connected like below.



CAUTION! Fully insert the connector.