

NAME: \_\_\_\_\_

PHONE: \_\_\_\_\_

SCHOOL/ORGANIZATION: \_\_\_\_\_

E-MAIL: \_\_\_\_\_

DEALER/REP: \_\_\_\_\_

SALES REP: \_\_\_\_\_ QUOTE: \_\_\_\_\_

# Terry Cotton Towels

The Terry Cotton Towels are fluffy, soft, thick, and absorbent, yet they dry very quickly. These towels use high quality cotton and are woven to a plush 600 grams per square meter giving them the ultra soft feeling wash after wash. Face/wash towels and hand towels are sold in packs of 6.



**Towel Wash  
and Towel Hand**



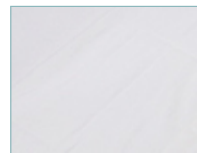
## STANDARD FEATURES:

- 100% high quality ring spun cotton
- 600 GSM

### Standard Towels:

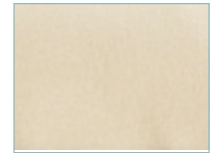
**Towel Wash** - Terry Cotton Face/Wash Towels - Pack of 6  
12"W x 12"L

**Towel Hand** - Terry Cotton Hand Towels - Pack of 6  
16"W x 30"L



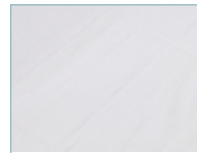
**White**

Qty \_\_\_\_\_



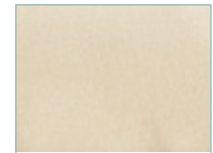
**Natural**

Qty \_\_\_\_\_



**White**

Qty \_\_\_\_\_



**Natural**

Qty \_\_\_\_\_



### Washing Instructions:

Make sure you wash your towels before you use them. For the first wash add 1/2 cup to 1 cup of white vinegar during the rinse cycle. Make sure you are pouring the vinegar into the water and not directly on the towels. We recommend using a mild laundry detergent as well as washing your white towels in warm water. Use about half the amount of detergent you normally would to prevent build up. Dry on a cool setting, as heat will cause the fibers to break down and become scratchy and rough. Do NOT use softener. Softeners prevent the towel fibers from being able to absorb moisture. If you notice your towels smell or if they seem to not be as soft as they once were, wash with 1 cup of vinegar to balance the PH levels back to normal.