



TABLE

TALK

*CUSTOM
CRAFTWORKS*
A Brand Of Pivotal Health Solutions



**ELECTRIC
TABLES:
Assessing
your massage
table needs**



888-515-0444

www.MassageTablesNow.com



After assessing your massage table needs and weighing the different table options, you might decide that **an electric table is right for you.**

What are the advantages to treating clients on an electric massage table?



- Accommodate More Clients
- Improved Body Mechanics
- Increase Client Comfort



Elegance Basic Electric Table
shown in Sapphire, with optional
Breast Recesses upgrade



Majestic Basic Electric Table
shown in Ivory with
optional rounded
corners



Hands Free Basic Electric Table
shown in Black

TABLE

TALK

ADVANTAGE: Accommodate More Clients



**CUSTOM
CRAFTWORKS**
A Brand Of Pivotal Health Solutions

Adding an Electric Massage Table to your practice can help you to accommodate more clients.

The ADA compliant* height adjustment on many of our electric massage tables allows clients to more easily transfer from wheelchair to table. Those with limited mobility or knee and hip issues will also appreciate being able to get on and off the table more comfortably. Most of our electric lifts have higher weight capacities than many portable tables. The Hands Free Electric Table even offers an optional bariatric weight capacity of 650 lbs. Many of our models include or can be upgraded to include a power tilt back adjustment to assist you with positioning clients who are uncomfortable lying flat.



*Some models are ADA compliant (Consult your tax professional about eligibility for a Section 44 ADA Tax Credit).



Power Tilt Back
upgrade available on
some models



550 lb.
Load Capacity

PRO TIP: Assess your massage space and consider additional ways to make your practice more accessible.



18"-34" Height Range

Pro Basic Electric Table
shown with prenatal option

TABLE

TALK

ADVANTAGE: Improve Body Mechanics



**CUSTOM
CRAFTWORKS**
A Brand Of Pivotal Health Solutions

We have all heard the saying “work smarter, not harder”.

Different therapists work at different table heights for optimal leverage and ergonomics. Working on a table that is too low or too high and transporting a heavy portable table on a regular basis can increase strain on the wrists and back as well as contribute to injury, fatigue and “therapist burn out”. With a portable or stationary table, it is difficult to make an adjustment during the massage or set the table up properly based on the needs of each client, but not so with Electric Massage Tables. Many therapists consider acquiring an Electric Massage Table an essential component to their commitment to self-care.



Elegance Electric Table Shown

PRO TIP: Contemplate if a foot control, hand control or foot bar system is best for you and how you work. Do you need pedals accessible on both sides?

QUESTIONS?

Go to the back over for Electric Table FAQs

TABLE



**CUSTOM
CRAFTWORKS**
A Brand Of Pivotal Health Solutions

TALK

ADVANTAGE: Increase Client Comfort

Electric Massage Tables offer several positioning and comfort advantages over traditional portable massage tables.

Our secure steel lift bases have a solid look and feel that will put even a first time client at ease. Our Electric Massage Tables are available in three configurations - Basic, Lift Back and Deluxe.

A Basic features a flat surface, and is used for most modalities.

A Lift Back is used for traditional massage modalities as well as massage performed with the upper body elevated. This is a versatile choice for facials, waxing and esthetics.

A Deluxe offers the advantages of the Lift Back but adds the ability to raise the table under the knee as well.

Most of our built to order Electric Massage Tables can be further customized for comfort. Choose our Touch Response memory foam system to facilitate a nurturing/cradling effect during the massage or Breast Recesses for compression-free positioning. Table extensions give clients room to relax.

PRO TIP: Because an electric table can be lowered to the optimal working height regardless of width, many therapists opt for a wider table for client comfort.



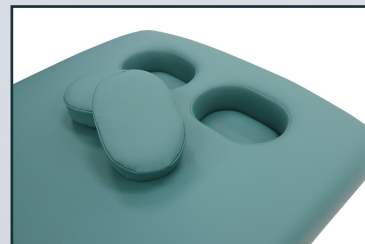
Elegance Basic Electric Table
shown in Sapphire with optional Breast Recesses upgrade



Majestic Lift Back Electric Table
shown in Black



McKenzie Deluxe Electric Table
shown in Buff



OPTION: Breast Recesses



**CUSTOM
CRAFTWORKS**
A Brand Of Pivotal Health Solutions

Best Sellers

Best
Value!



**Pro Basic
Electric Table**
shown in Agate
with prenatal
upgrade



**Pro Lift Back
Electric Table**
shown in Buff

**Pro Deluxe
Electric Table**
shown in Jade



Innovative
Design!

**Hands Free Basic
Electric Table**
shown in Black



**Hands Free Lift
Back Electric Table**
shown in Navy with
rounded corners



**Hands Free
Deluxe Electric
Table** shown in
Stainless Steel
Gray



Controlling the height
of your table has never
been easier!



VIEW OUR ONLINE VIDEO
www.customcraftworks.com

**Signature
SPA SERIES**
by CUSTOM CRAFTWORKS

SIGNATURE SPA SERIES ELECTRIC TABLES

**E100 Deluxe
Electric Spa Table**



**M100 Basic
Spa Table**



**Signature Spa
Series Hands
Free Deluxe
Electric Table**



At a Glance...

Electric Table Guide

TABLE	 ADA Compliant	 Height Range	 lbs. Load Rating	 Electric Lift Back Option Available	 Prenatal Option Available	 Breast Recess Option Available	 Touch Response Memory Foam Available	 Natural Touch Upholstery Option Available	 Cabinet
 Pro									
Basic	✓	18-34"	550	✗	✓	✓	✗	✗	✗
Lift Back	✓	18-34"	550	✗	✗	✓	✗	✗	✗
Deluxe	✓	18-34"	550	✗	✗	✓	✗	✗	✗
 Elegance									
Basic	✓	18-34"	550	✗	✓	✓	✓	✓	✗
Lift Back	✓	18-34"	550	✓	✗	✓	✓	✓	✗
Deluxe	✓	18-34"	550	✓	✗	✓	✓	✓	✗
 McKenzie									
Basic	✓	19-38"	400	✗	✗	✓	✓	✓	✗
Lift Back	✓	19-38"	400	✓	✗	✓	✓	✓	✗
Deluxe	✓	19-38"	400	✓	✗	✓	✓	✓	✗
 Majestic									
Basic	✗	27.5-39"	600	✗	✓	✓	✓	✓	✗
Lift Back	✗	27.5-39"	600	✓	✓	✓	✓	✓	✗
Deluxe	✗	27.5-39"	600	✓	✗	✓	✓	✓	✗
 Hands Free									
Basic	✓	17-35"	650	✗	✗	✓	✓	✓	✗
Lift Back	✓	17-35"	650	✓	✗	✓	✓	✓	✗
Deluxe	✓	17-35"	650	✓	✗	✓	✓	✓	✗
 Signature Spa Series Hands Free									
Basic	✓	17-35"	650	✗	✗	✓	✓	Included	✗
Lift Back	✓	17-35"	650	✓	✗	✓	✓	Included	✗
Deluxe	✓	17-35"	650	✓	✗	✓	✓	Included	✗
 M100									
Basic	✗	27-34"	550	✗	✗	✓	✓	✓	✓
Lift Back	✗	27-34"	550	✗	✗	✓	✓	✓	✓
Deluxe	✗	27-34"	550	✗	✗	✓	✓	✓	✓
 E100 Deluxe	✗	28-34"	650	Included	✗	✗	✗	✗	✓
 Signature Spa Series Pedestal Deluxe Electric Table	✗	25-34"	650	Included	✗	✗	✗	✗	✗

What people are saying...

"The only tables I will buy in the future!! I have purchased 3 of the Hands Free models for my practice over the past couple years. The fact that you can raise and lower the table while standing anywhere around it is a big deal when your hands are always on the client. Since I have been using these tables, I have less fatigue, my back pain is gone and my clients comment on how professional they are! I also love it for elderly people getting on and off the table and also those in wheelchairs or with other disabilities. BEST tables you can buy!!"

Heather Rowell

**Hands Free Deluxe
Electric Table**



Electric Table FAQs

How will it be delivered?

We ship via freight with a service level of curbside/ liftgate notification. We are happy to provide a quote for additional services prior to shipment. Just contact us when you place your order!

Is assembly required?

Custom Craftworks Electric Massage Tables come fully assembled to your location.

Are accessories included?

We include a face cradle and cushion with all Basic and Lift Back Tables. Face cradle, cushion and swivel side arm extensions are included with all deluxe tables.

What options are available on each table? Which tables are ADA compliant?

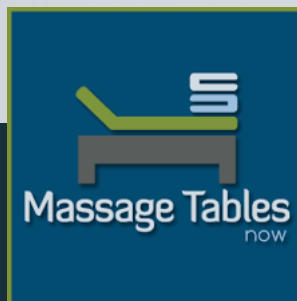
See our **"At a Glance" Table Buying Guide** on pg. 7.

I have more questions - who can help me?

You can reach us at:

888-515-0444

MassageTablesNow.com



**CUSTOM
CRAFTWORKS**
A Brand Of Pivotal Health Solutions

888-515-0444

www.MassageTablesNow.com

