

DESIGN STRATEGIES FOR THE COVID-19 PANDEMIC

RELOCATE, REPURPOSE, REORGANIZE

European Health Property Network / Ramboll & walkerproject

29.05.2020

Emergency Extension for Hospital del Mar, Barcelona



Before COVID-19

532 beds
+40 ICU beds

Required COVID-19

+190 ICU beds

Accomplished March 2020

196 ICU beds



Possible Scenarios

- Day-Hospital mutation
- Occupation of First Level
- Occupy Sport Facility close to Hospital
- Parking transformation

Emergency Extension for Hospital del Mar, Barcelona

Before COVID-19



From armchairs to beds (54)

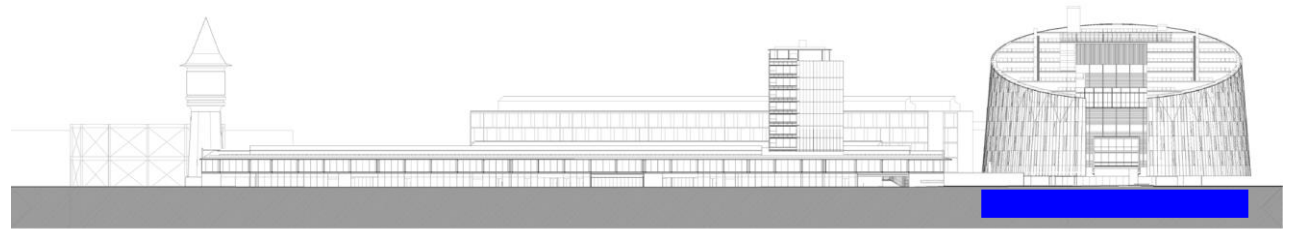


Occupation of First Level (70)

Emergency Extension for Hospital del Mar, Barcelona

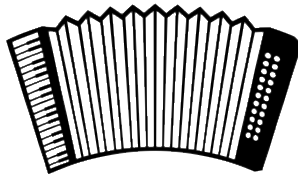


Occupation of Sport Facility (72)



The Future of
Hospital Design
[post-pandemia]

An Accordion Hospital



Spaces with large functional use:

- Waiting Rooms at Emergency Wards
- Large Halls

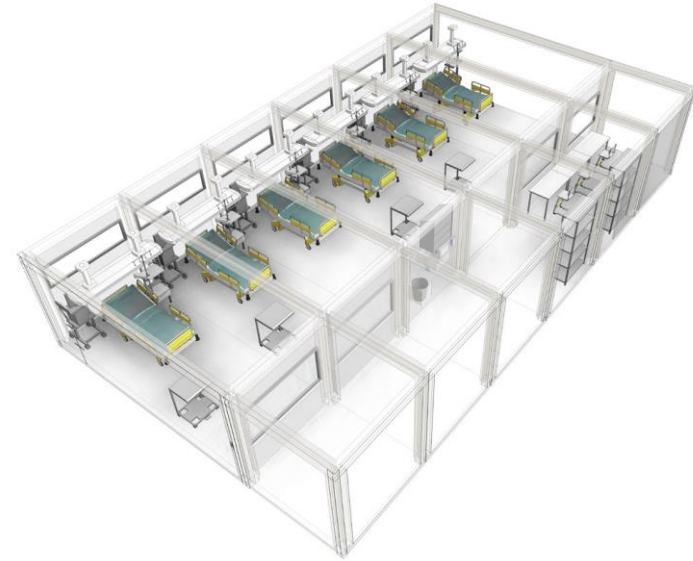
New circulations specifically dedicated to:

- Intensive Care: with a corridor dedicated to the patient's family

Layout in Serie:

- Linear and repeated arrangements, without crushing the space

CareBox [Arup & Pinearq]





Thanks

PINEARQ

pinearq.com

[@pinearq](https://www.instagram.com/pinearq)

[instagram.com/pinearq](https://www.instagram.com/pinearq)

[linkedin.com/company/pinearq](https://www.linkedin.com/company/pinearq)