



J-BAR INSTALLATION INSTRUCTIONS

RECOMMENDED TOOLS: Screw Driver or Drill

IF ONLY INSTALLING LOWER J-BAR:

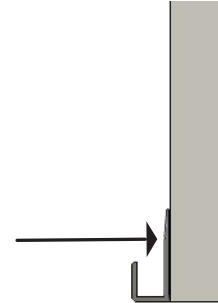
(If installing upper and lower J-Bar go to next page for directions)

1

Mount the J-Bar to the wall in desired position.

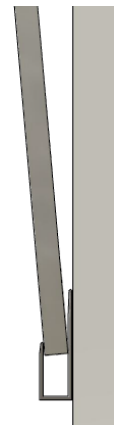
If using punched and slotted J-Bar, screws can be placed through pre-drilled holes.

If using standard J-Bar, screws must be drilled through the back of the J-Bar.



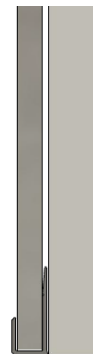
2

Apply adhesive if necessary to the back of infill. Slide infill into place inside the J-Bar



3

Ensure that the infill is flush against the back surface. Attach clips to sides and top if required.



**Contact Our Team Of Experts If You Have Any Questions Or
Need Additional Assistance At 800.325.7513**



IF INSTALLING UPPER AND LOWER J-BAR:

1

Mount the bottom J-Bar to the wall in desired position.

If using punched and slotted J-Bar, screws can be placed through pre-drilled holes.

If using standard J-Bar, screws must be drilled through the back of the J-Bar.

2

Mount the upper J-Bar to the wall in desired position.

If using punched and slotted J-Bar, screws can be placed through pre-drilled holes.

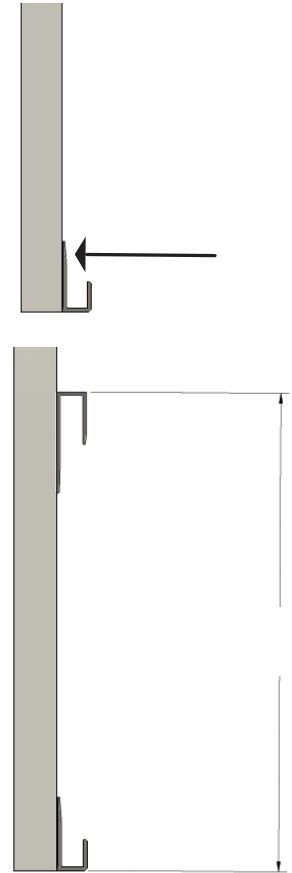
If using standard J-Bar, screws must be drilled through the back of the J-Bar.

IMPORTANT: Upper J-Bar should be located at a height that will allow for the infill to be slid into place, while still ensuring that the upper edge of the infill is captured by the upper J-Bar channel. At a minimum, this distance will be the height of the lower J-Bar front, plus the height of the infill.

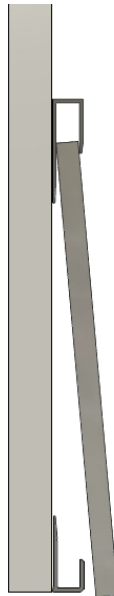
3

To mount the infill in the J-Bars:

1. Add adhesive to back of infill if necessary.
2. Slide the top of the infill into the upper J-Bar
3. Place the infill flush with the wall behind.
4. Drop infill into the channel of the bottom J-Bar.



Step 2



Step 3



Step 4



**Contact Our Team Of Experts If You Have Any Questions Or
Need Additional Assistance At 800.325.7513**