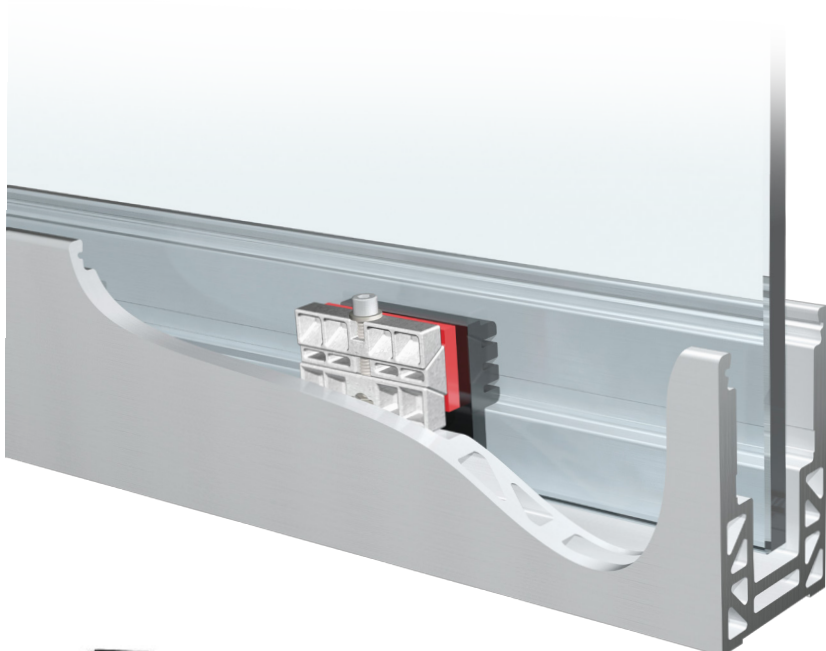
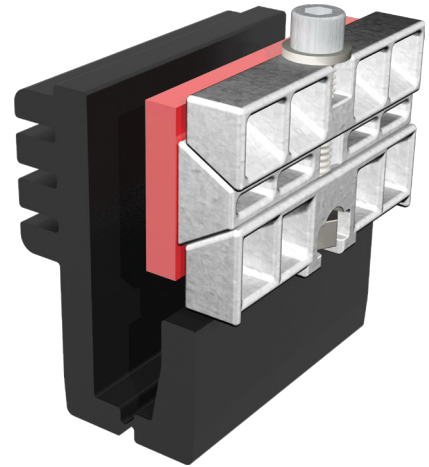


PANELGRIP®2

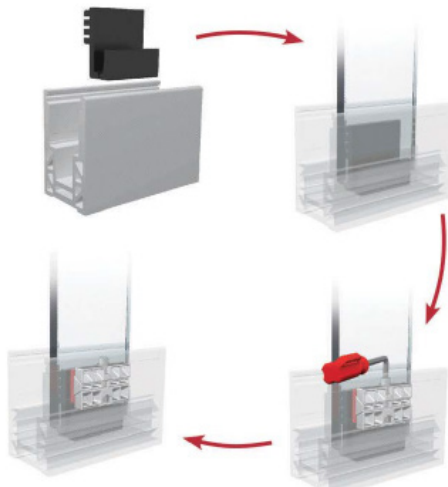
DRY GLAZE SYSTEM

THE LATEST IN GLASS RAILING TECHNOLOGY.

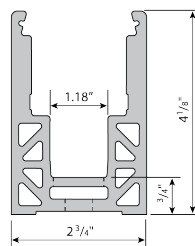
PanelGrip®2 facilitates the quick assembly of structural glass railing without messy fillers or special tools resulting in significant savings in labor and shipping costs.



- Reduce Labor Costs up to 80% - No setting blocks, no plumbing of glass, no multiple pours of cement, no waiting for cement to cure, no messy clean-up
- Broadest Grip Range of any Dry Glaze System – Made for range of 1/2" to 13/16" tempered and laminate glass (12.7mm to 21.5mm)
- No Special Tools Required – All you need is an Allen wrench for installation or removal
- No Mess – No mixing and pouring of expansion cement, no running of cement on incline



NEW



A42-0073
10' & 20' lengths
CB, SD & Undrilled

The PanelGrip®2 base shoe and mechanism are sold as a system and are subject to one or more of the following patents: US7730682, US8181405, NZ581456, CA2697162, EP2171180 and/or AU2008282693

CALL US
800.325.7513