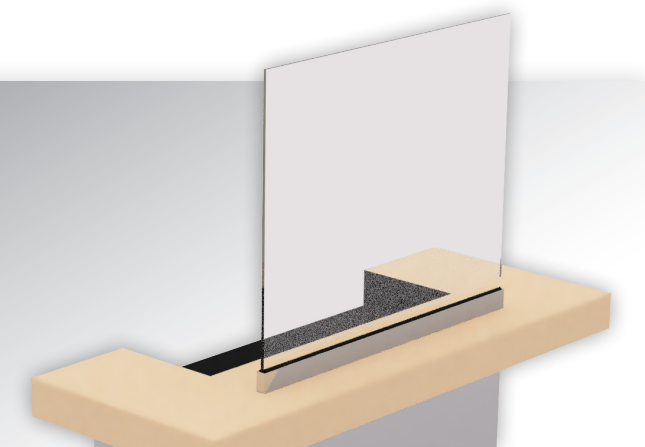




# EDGE-SUPPORTED SAFETY SHIELD SYSTEM

For 38 years, customers have relied on Morse Industries for top quality products and excellent customer service. Morse Industries is excited to supply Safety Shield Sneeze Guard Systems. These systems provide a clear barrier to keep both employees and customers safer in transactional environments. Now, more than ever, implementing additional safety measures proves to be essential for many businesses.

The Edge-Supported Safety Shield System is compatible with 3/8" to 1/2" plexiglass, tempered glass or polycarbonate infill. This solution provides a solid barrier and the systems are offered in a variety of materials and finishes. Please contact us for additional details.



## PRODUCT FEATURES:

- Compatible with tempered glass, plexiglass, polycarbonate and other infills
- Accommodates infill thicknesses of 3/8" to 1/2"
- Customizable length
- Hardware included
- Easy to install
- Recommended height up to 30"
- Available in a variety of finishes

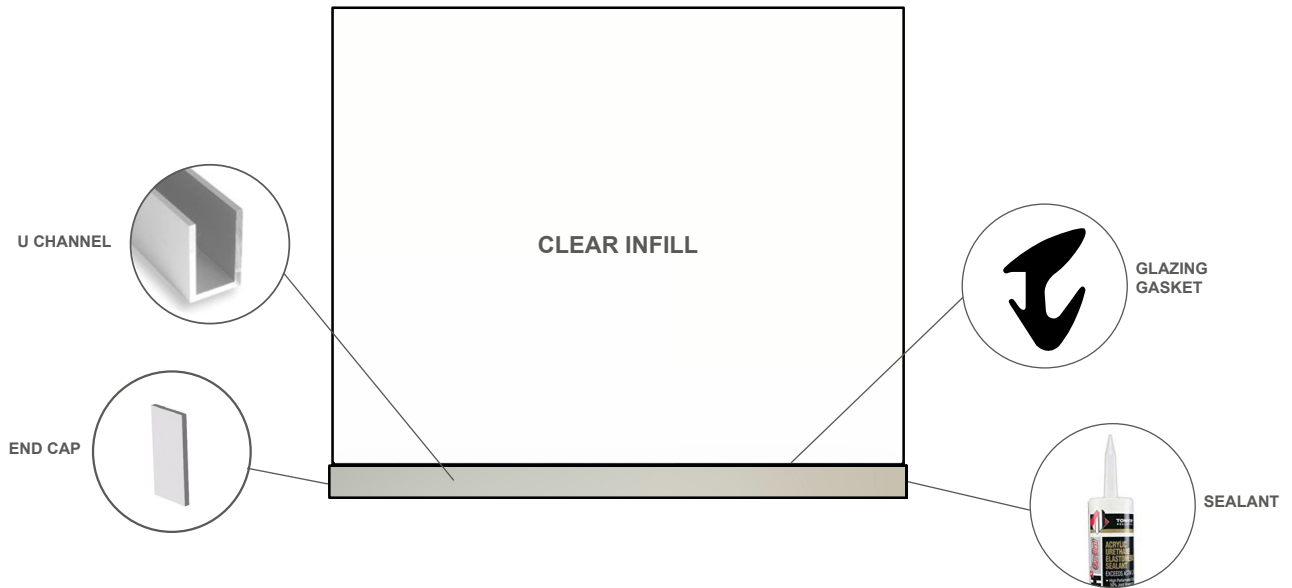
**KIT PART #: A54-5040**

**WWW.MORSEINDUSTRIES.COM | 800.325.7513**



# EDGE-SUPPORTED SAFETY SHIELD

The Edge-Supported Shield utilizes a U-Channel for support, and does not require vertical posts. This system provides a solid barrier with no gaps. Available in customizable lengths. The aluminum channel works with a variety of infill materials and accommodates thicknesses from 3/8" to 1/2". Multiple finishes and claddings are available.

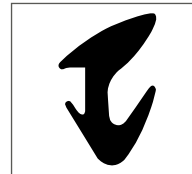


## KIT INCLUDES (Part #A54-5040)



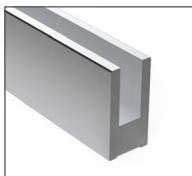
**TOWERTECH2 CLEAR ARCHITECTURAL SEALANT**  
(1) MODIFIED URETHANE ACRYLIC

Part #: G42-5950CLR



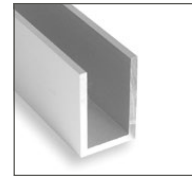
**GLAZING GASKET**  
(1) GASKET FOR 3/8" GLASS  
PLACE ON EACH SIDE OF GLASS

Part #: V50-0601BKA



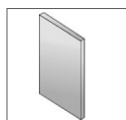
**LOW PROFILE BASE CHANNEL**  
(1) 2-3/4" X 1-3/8" CHANNEL  
MILL FINISH - CLADDING AVAILABLE IN SATIN SILVER OR BRUSHED STAINLESS  
CAN BE PAINTED OR POWDER COATED  
Part #: A42-0064AEY10C

OR



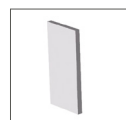
**ALUMINUM U CHANNEL**  
(1) 1" X 2" X .125" CHANNEL  
SATIN SILVER OR BRUSHED STAINLESS ANODIZED  
Part #: A40-1402BSA10

## OPTIONAL END CAPS:



(2) END CAP  
Part #: A17-0064

OR



(2) END CAP  
Part #: A17-1402

NOTE: For use with  
Part #: A42-0064AEY10C Only

NOTE: For use with  
Part #: A40-1402BSA10 Only

WWW.MORSEINDUSTRIES.COM | 800.325.7513



**Northwest Distribution Facility**  
Morse Industries Headquarters  
25811 74th Avenue South  
Kent, WA 98032

**Southwest Distribution Facility**  
Morse Industries  
3080 Enterprise Avenue, Suite A Brea,  
CA 92821

**Central U.S. Distribution Facility**  
Morse Industries  
4041 N. Santa Fe Ave.  
Oklahoma City, OK 73118

**Mid-Atlantic Distribution Facility**  
Morse Industries  
1630 Old Dunbar Road  
West Columbia, SC 29172