



# ROUND POST AND CLAMP SAFETY SHIELD KIT

For 38 years, customers have relied on Morse Industries for top quality products and excellent customer service. Morse Industries is excited to partner with installers to supply Safety Shield Systems. These systems provide a clear barrier to keep both employees and customers safer in transactional environments. Now, more than ever, implementing additional safety measures proves to be essential for many businesses.

Safety Shield Systems are compatible with 1/4" to 3/8" plexiglass, tempered glass or polycarbonate infill\*. We offer solutions that allow money and small items to pass underneath or provide a solid barrier. Systems are offered in a variety of materials and finishes. Please contact us for additional details.



**WWW.MORSEINDUSTRIES.COM | 800.325.7513**

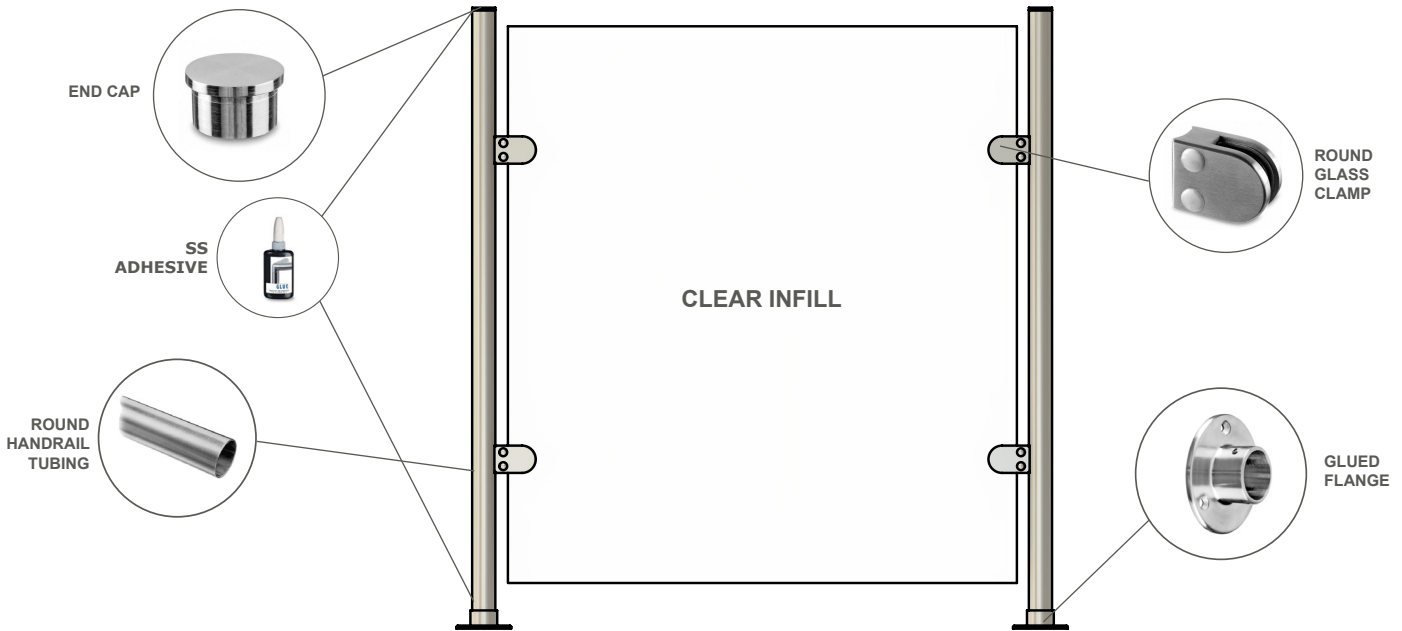
MORSE INDUSTRIES • WORKING SOLUTIONS IN RAILING, SHOWER & ARCHITECTURAL METALS • SINCE 1982

*\*Refer to individual product specifications for infill size details*



# ROUND POST SAFETY SHIELD KIT

The Round Post Shield provides the ability to pass money and small objects below the infill. The posts on this shield are made of stainless steel which creates a high end appearance. The Round Post Shield works with a variety of infill material, accommodating thicknesses from 1/4" to 3/8". Posts have 1 1/2" diameter and are 40" long. No fabrication is needed on the infill material for the clamps.

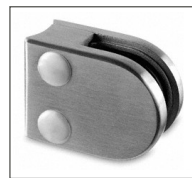


Kit Part #: S54-1040BS



**END CAP**  
(2) Ø1.5" GLUED CAP FOR TOP OF POSTS

Part #: M13-0732-038-12



**GLASS CLAMP**  
(4) ROUNDED GLASS CLAMPS

NOTE: (2) gaskets are required for each clamp

Part #: M13-2512-038-12



**ROUND POST**  
(2) Ø1.5" ROUND POSTS 40" LONG WITH .078" WALL THICKNESS, PREDRILLED  
304 Stainless Steel  
#4 Brushed Finish

Part #: M43-0900-038-12



**BASE FLANGE**  
(2) Ø1.5" GLUED BASE FLANGE FOR BOTTOM OF POSTS

Part #: M13-0505-038-12



**STAINLESS STEEL ADHESIVE GLUE**  
QUICK SETTING, HIGH STRENGTH, STAINLESS STEEL ADHESIVE

Part #: R19-1331-000-00 (Sold separately - Each bottle covers around 10 installations)

WWW.MORSEINDUSTRIES.COM | 800.325.7513



**Northwest Distribution Facility**  
Morse Industries Headquarters  
25811 74th Avenue South  
Kent, WA 98032

**Southwest Distribution Facility**  
Morse Industries  
3080 Enterprise Avenue, Suite A Brea,  
CA 92821

**Central U.S. Distribution Facility**  
Morse Industries  
4041 N. Santa Fe Ave.  
Oklahoma City, OK 73118

**Mid-Atlantic Distribution Facility**  
Morse Industries  
1630 Old Dunbar Road  
West Columbia, SC 29172