

# PRECISION LOCK ADJUSTABLE STAND-OFF SAFETY SHIELD

**ALL HORIZONTAL GLASS ADJUSTMENT CAN BE MADE WITH GLASS INSTALLED**

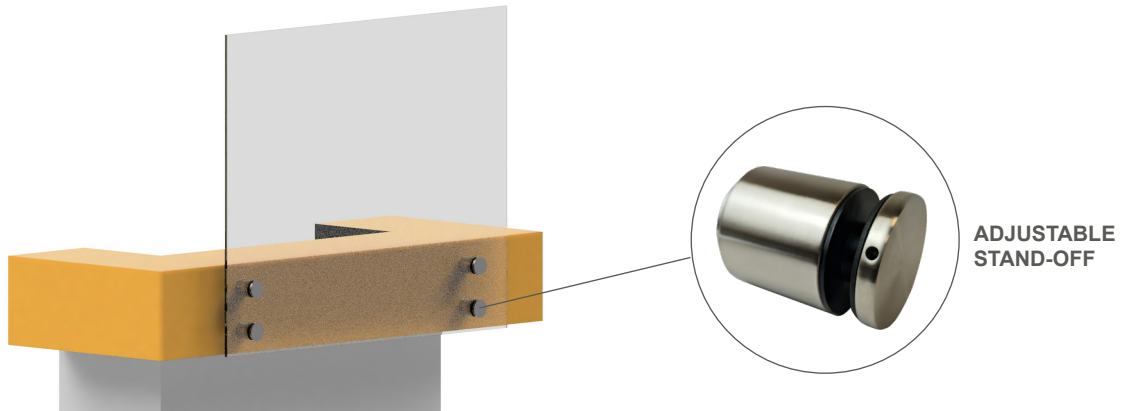


For 38 years, customers have relied on Morse Industries for top quality products and excellent customer service. Morse Industries is excited to supply Safety Shield Sneeze Guard Systems. These systems provide a clear barrier to keep both employees and customers safer in transactional environments. Now, more than ever, implementing additional safety measures proves to be essential for many businesses.

The Precision Lock Adjustable Stand-Off Shield System is quick and easy to install. The Stand-Offs are made of high strength stainless steel, and are adjustable even after glass is installed. Please contact us for additional details.



# PRECISION LOCK ADJUSTABLE STAND-OFF SAFETY SHIELD



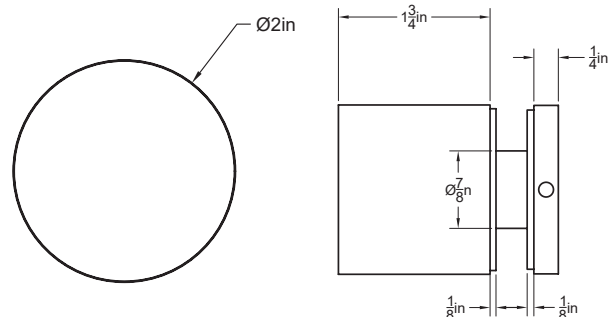
## PRODUCT FEATURES:

- Each Stand-Off adjustable by 3/8"
- Up to 1/2" multi-directional adjustment on wall before glass installed
- No need to access behind glass once fitted
- 2205 High Strength Ultra-Marine Stainless Steel
- Ultra-slim 1 piece head design



**ADJUSTABLE STAND-OFF**  
2" Dia. Standoff with  
Multi-Way Adjustable Base

PART #: S10-5045BS



For additional support call 800.325.7513 or visit our website [www.morseindustries.com](http://www.morseindustries.com)



**Northwest Distribution Facility**  
Morse Industries Headquarters  
25811 74th Avenue South  
Kent, WA 98032

**Southwest Distribution Facility**  
Morse Industries  
3080 Enterprise Avenue, Suite A  
Brea, CA 92821

**Central U.S. Distribution Facility**  
Morse Industries  
4041 N. Santa Fe Ave.  
Oklahoma City, OK 73118

**Mid-Atlantic Distribution Facility**  
Morse Industries  
1630 Old Dunbar Road  
West Columbia, SC 29172