



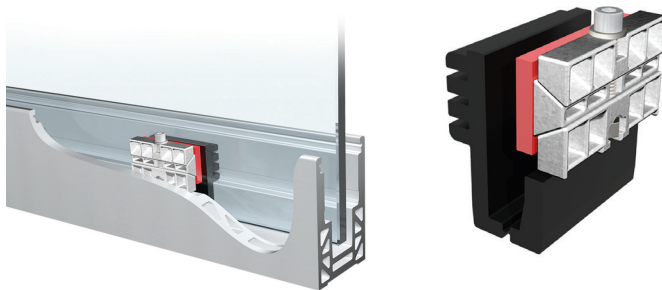
PANELGRIP® DRY GLAZE SYSTEM

THE LATEST IN GLASS RAILING TECHNOLOGY

Panelgrip® Dry Glaze System facilitates the quick assembly of structural glass railing without messy fillers or special tools resulting in significant savings in labor and shipping costs.



ICC-ES has the most widely accepted evaluation reports in North America



Select Panelgrip® Dry Glaze System components are ICC compliant when installed to the specifications in ICC ESR-3950*

ICC-ES IS:

- Reduce Labor Costs up to 80% - No setting blocks, no plumbing of glass, no multiple pours of cement, no waiting for cement to cure, no messy clean-up
- Broadest Grip Range of any Dry Glaze System*
- No Special Tools Required – All you need is an Allen wrench for installation or removal
- No Mess – No mixing and pouring of expansion cement, no running of cement on incline
- The leader in evaluating building products for code compliance and sustainable attributes
- Promoting safety and consistency in buildings across the globe
- The most trusted and widely accepted evaluation body with close to a century of experience in building product evaluation
- A leader in innovative product evaluations
- Accredited by the American National Standards Institute (ANSI)
- A founding member of the World Federal Technical Assessment Organization (WFTAO)

****Customers requiring ICC compliant material must consult with our technical department upon initial request***

For additional support call 800.325.7513 or visit our website www.morseindustries.com



Northwest Distribution Facility
Morse Industries Headquarters
25811 74th Avenue South
Kent, WA 98032

Southwest Distribution Facility
Morse Industries
3080 Enterprise Avenue, Suite A
Brea, CA 92821

Central U.S. Distribution Facility
Morse Industries
4041 N. Santa Fe Ave.
Oklahoma City, OK 73118

Mid-Atlantic Distribution Facility
Morse Industries
1630 Old Dunbar Road
West Columbia, SC 29172