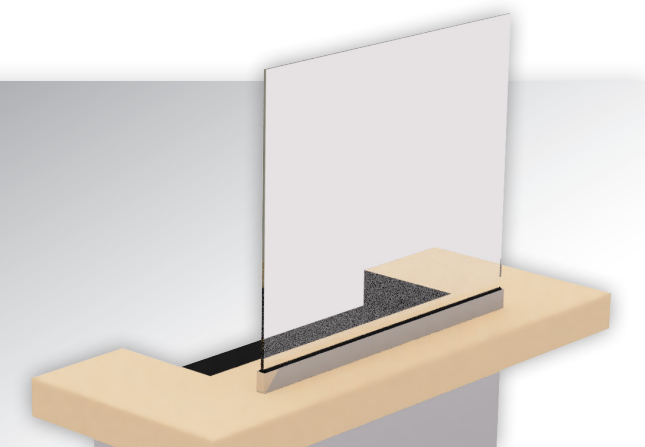




EDGE-SUPPORTED SAFETY SHIELD SYSTEM

For 38 years, customers have relied on Morse Industries for top quality products and excellent customer service. Morse Industries is excited to supply Safety Shield Sneeze Guard Systems. These systems provide a clear barrier to keep both employees and customers safer in transactional environments. Now, more than ever, implementing additional safety measures proves to be essential for many businesses.

The Edge-Supported Safety Shield System is compatible with 3/8" to 1/2" plexiglass, tempered glass or polycarbonate infill. This solution provides a solid barrier and the systems are offered in a variety of materials and finishes. Please contact us for additional details.



PRODUCT FEATURES:

- Compatible with tempered glass, plexiglass, polycarbonate and other infills
- Accommodates infill thicknesses of 3/8" to 1/2"
- Customizable length
- Hardware included
- Easy to install
- Recommended height up to 30"
- Available in a variety of finishes

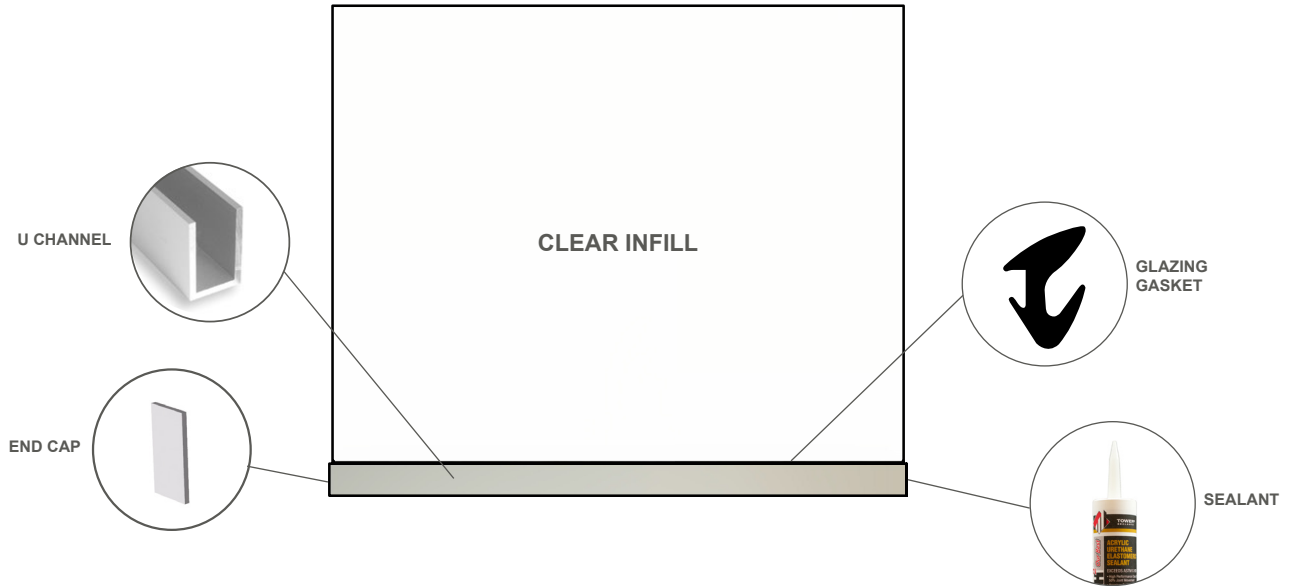
KIT PART #: A54-5040

WWW.MORSEINDUSTRIES.COM | 800.325.7513



EDGE-SUPPORTED SAFETY SHIELD

The Edge-Supported Shield utilizes a U-Channel for support, and does not require vertical posts. This system provides a solid barrier with no gaps. Available in customizable lengths. The aluminum channel works with a variety of infill materials and accommodates thicknesses from 3/8" to 1/2". Multiple finishes and claddings are available.

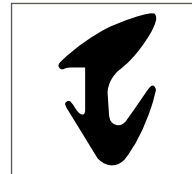


KIT INCLUDES (Part #A54-5040)



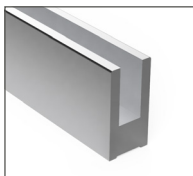
TOWERTECH2 CLEAR ARCHITECTURAL SEALANT
(1) MODIFIED URETHANE ACRYLIC

Part #: G42-5950CLR



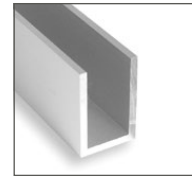
GLAZING GASKET
(1) GASKET FOR 3/8" GLASS
PLACE ON EACH SIDE OF GLASS

Part #: V50-0601BKA



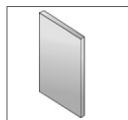
LOW PROFILE BASE CHANNEL
(1) 2-3/4" X 1-3/8" CHANNEL
MILL FINISH - CLADDING AVAILABLE IN SATIN SILVER OR BRUSHED STAINLESS
CAN BE PAINTED OR POWDER COATED
Part #: A42-0064AEY10C

OR



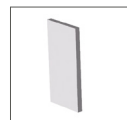
ALUMINUM U CHANNEL
(1) 1" X 2" X .125" CHANNEL
SATIN SILVER OR BRUSHED STAINLESS ANODIZED
Part #: A40-1402BSA10

OPTIONAL END CAPS:



(2) END CAP
Part #: A17-0064

OR



(2) END CAP
Part #: A17-1402

NOTE: For use with
Part #: A42-0064AEY10C Only

NOTE: For use with
Part #: A40-1402BSA10 Only

WWW.MORSEINDUSTRIES.COM | 800.325.7513



Northwest Distribution Facility
Morse Industries Headquarters
25811 74th Avenue South
Kent, WA 98032

Southwest Distribution Facility
Morse Industries
3080 Enterprise Avenue, Suite A Brea,
CA 92821

Central U.S. Distribution Facility
Morse Industries
4041 N. Santa Fe Ave.
Oklahoma City, OK 73118

Mid-Atlantic Distribution Facility
Morse Industries
1630 Old Dunbar Road
West Columbia, SC 29172