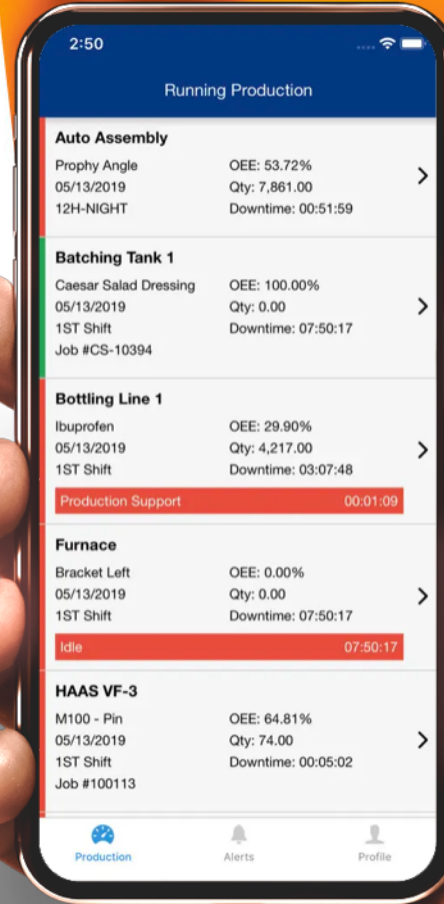




System Updates Training

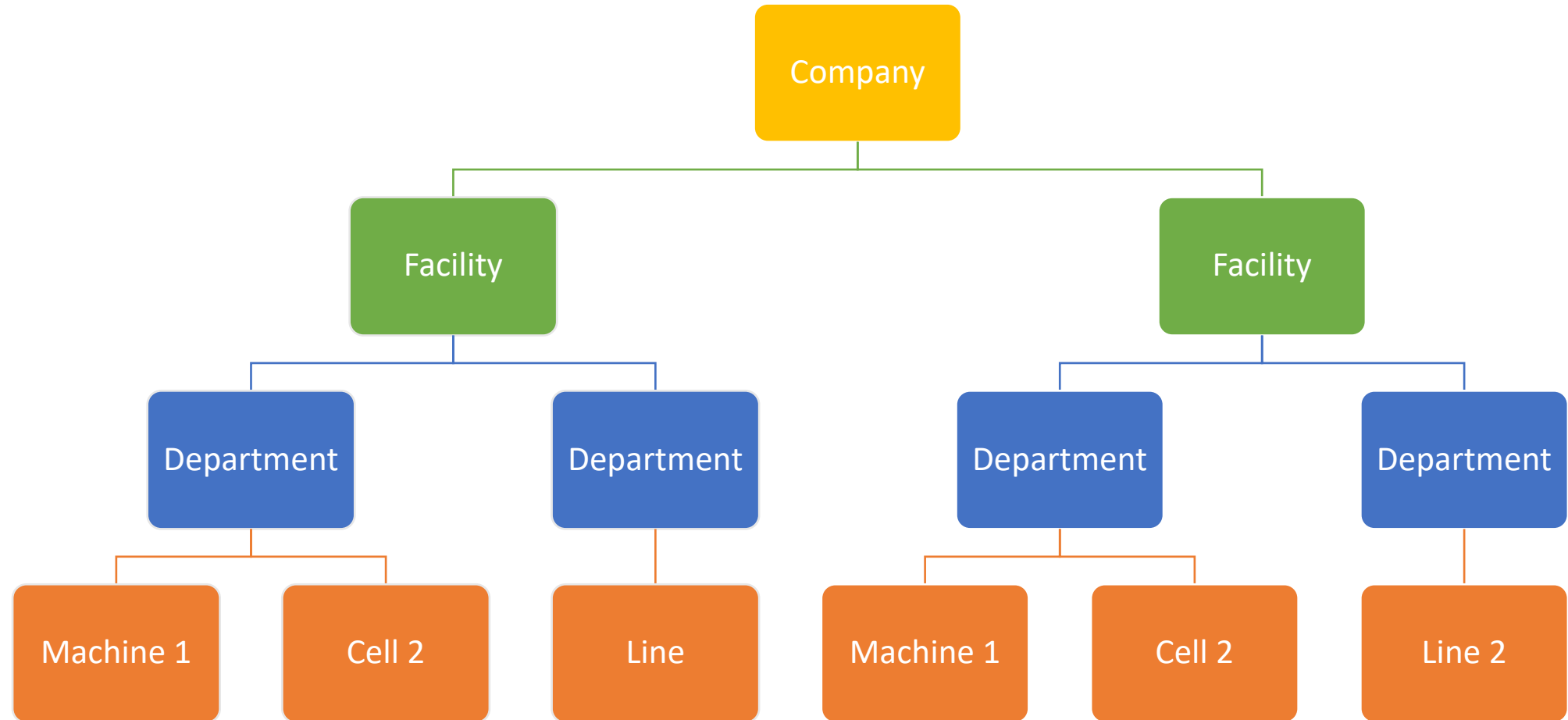


***If you can't measure it,
you can't improve it."***
- Lord Kelvin

Overview

- Downtime reasons are now color coded on the scoreboard.
- The backend database infrastructure has been updated to support better analytics coming later this year.
- As an added feature, you can scale cycle times by headcount.
- You will now be able to import and export cells/machines.

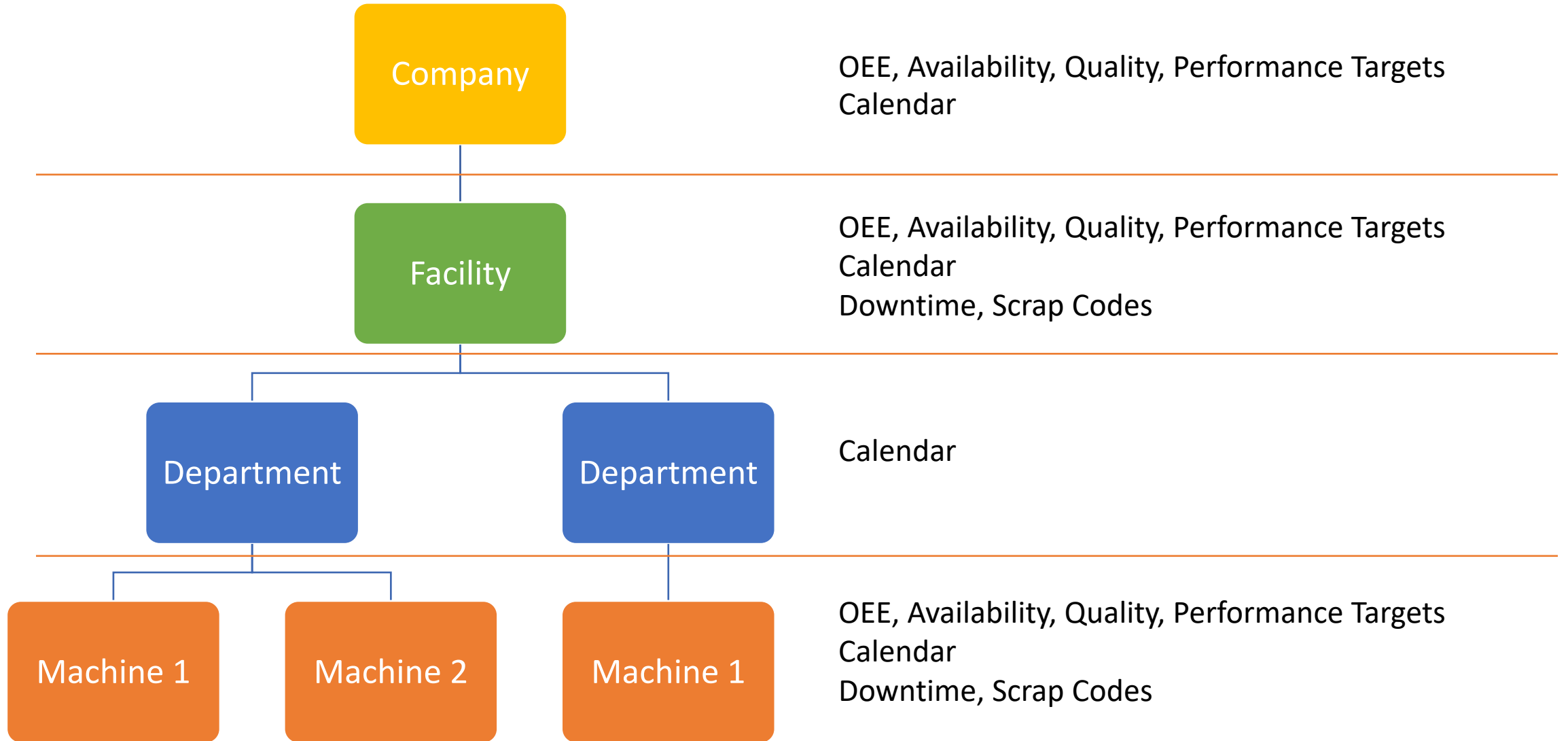
Company Hierarchy



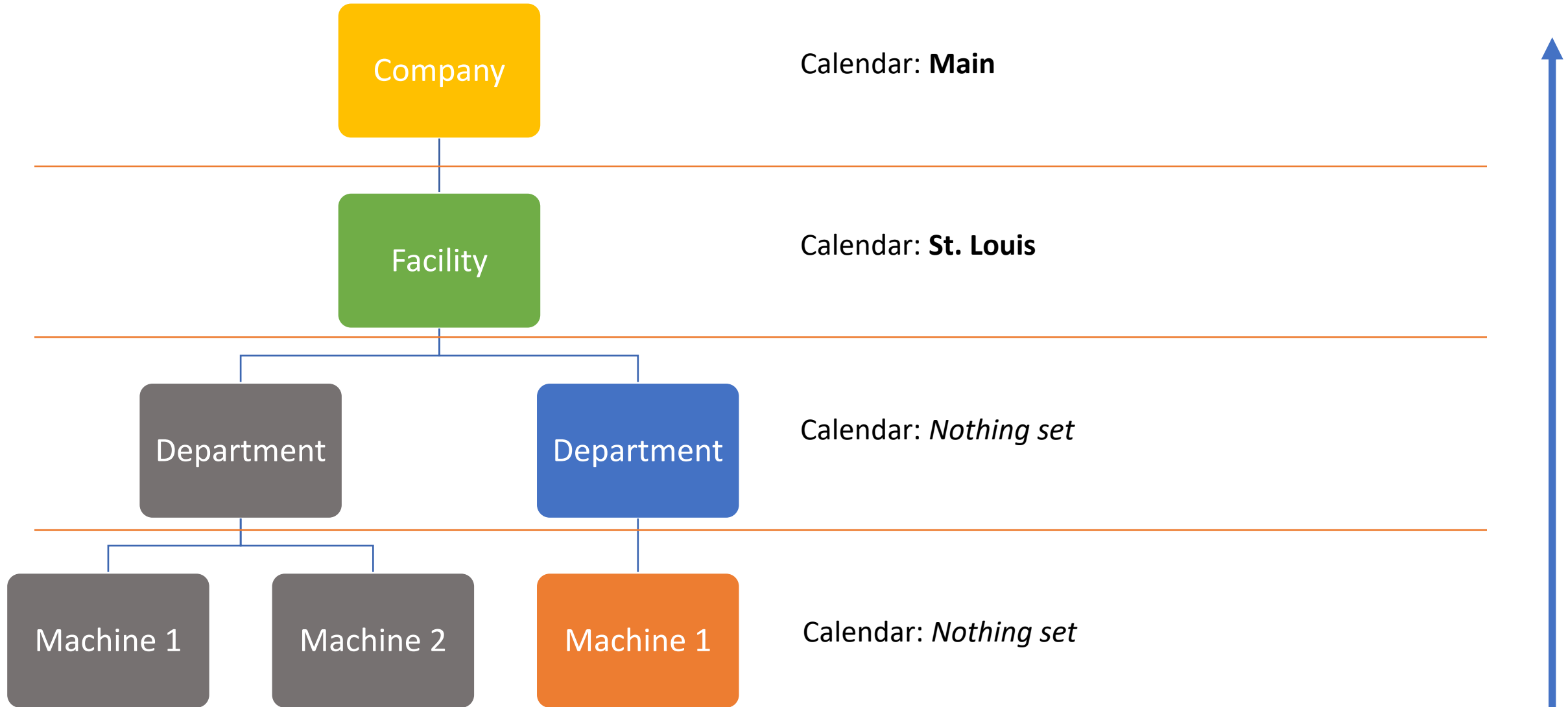
Machine Hierarchy Concepts

- Each level has the following settings that you can override
 - Metrics
 - OEE, Availability, Performance & Quality Targets
 - Downtime Reasons
 - Designed to limit the number of options shown to an operator
 - Scrap Reasons
 - Designed to limit the number of options shown to an operator
 - Calendar
 - For facilities, departments and machines that may not have the same schedule as the company.

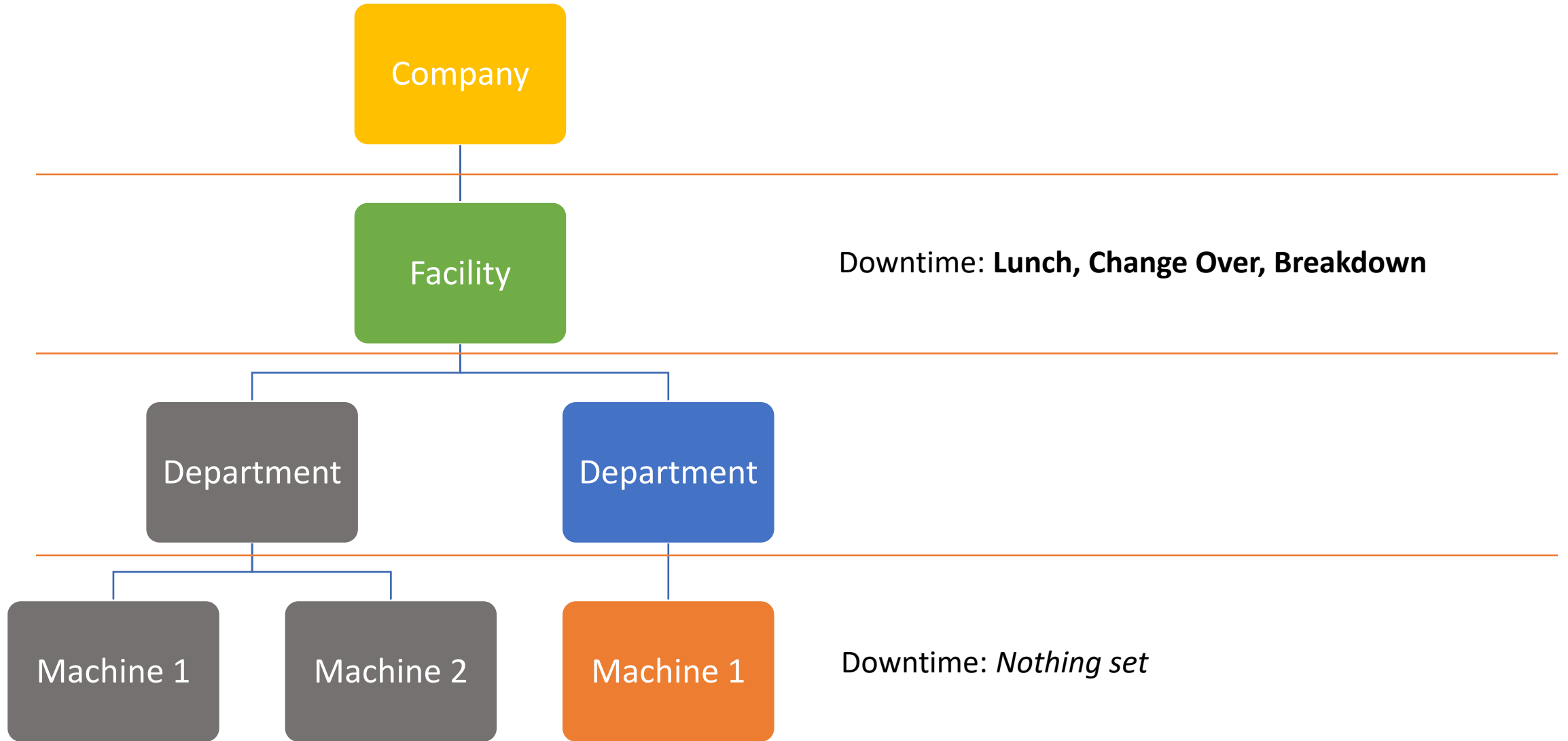
Example



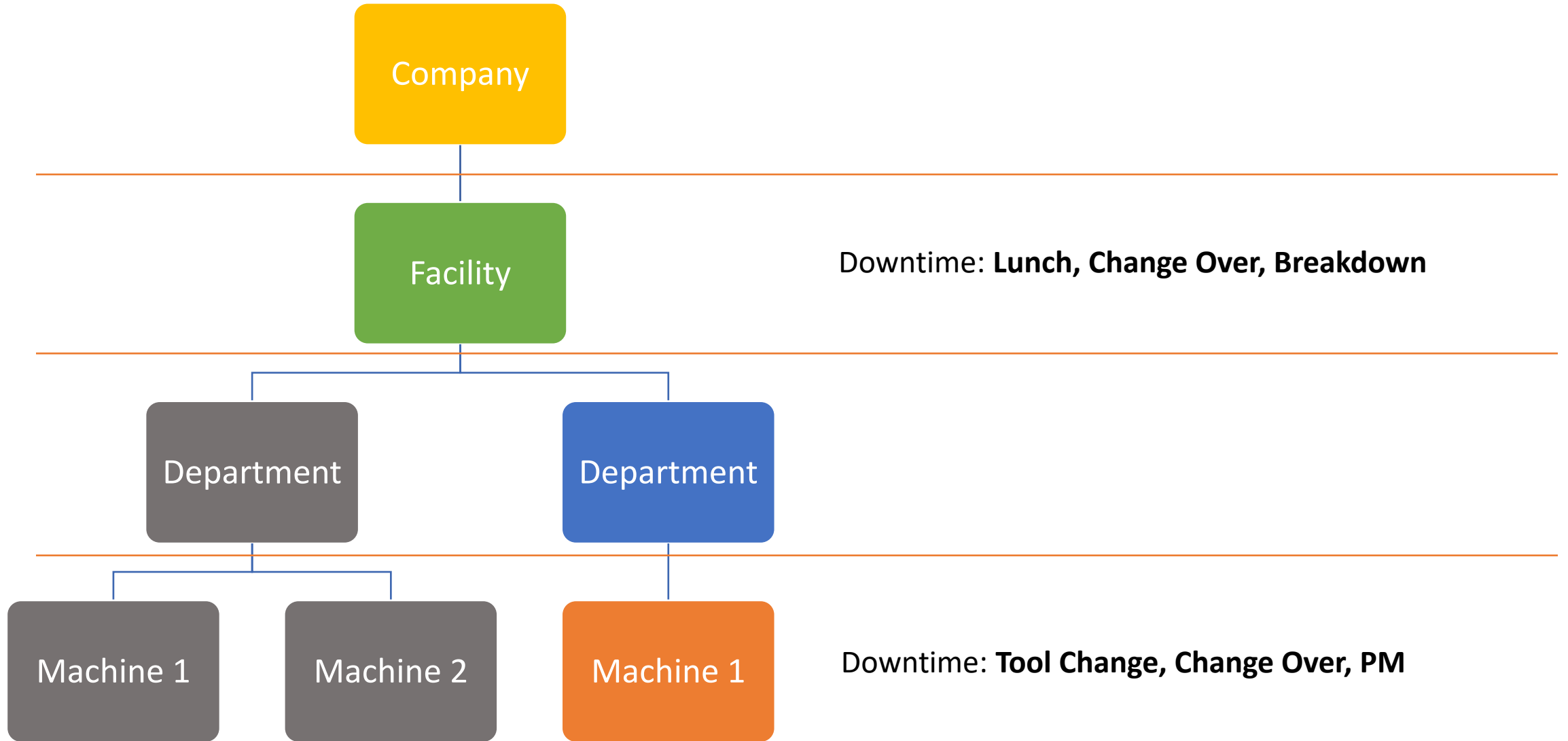
Calendar Example



Downtime Example



Downtime Example



Questions?

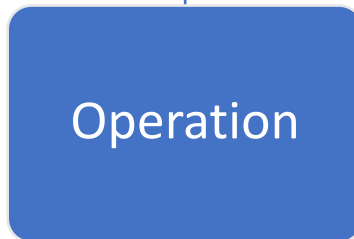
Cycle Time Hierarchy



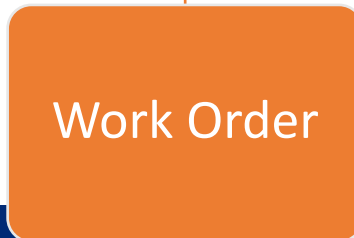
Default Cycle Time for Machine



Default Cycle Time for Part



Cycle Time for Part Running on Specific Machine



Cycle Time for a Single Work Order



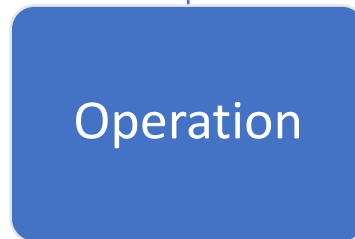
Cycle Time Hierarchy



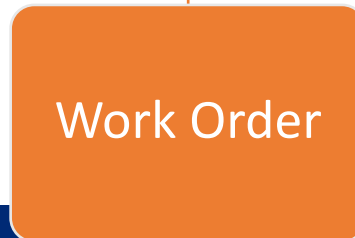
Default Cycle Time for Machine



Default Cycle Time for Part



Cycle Time for Part Running on Specific Machine



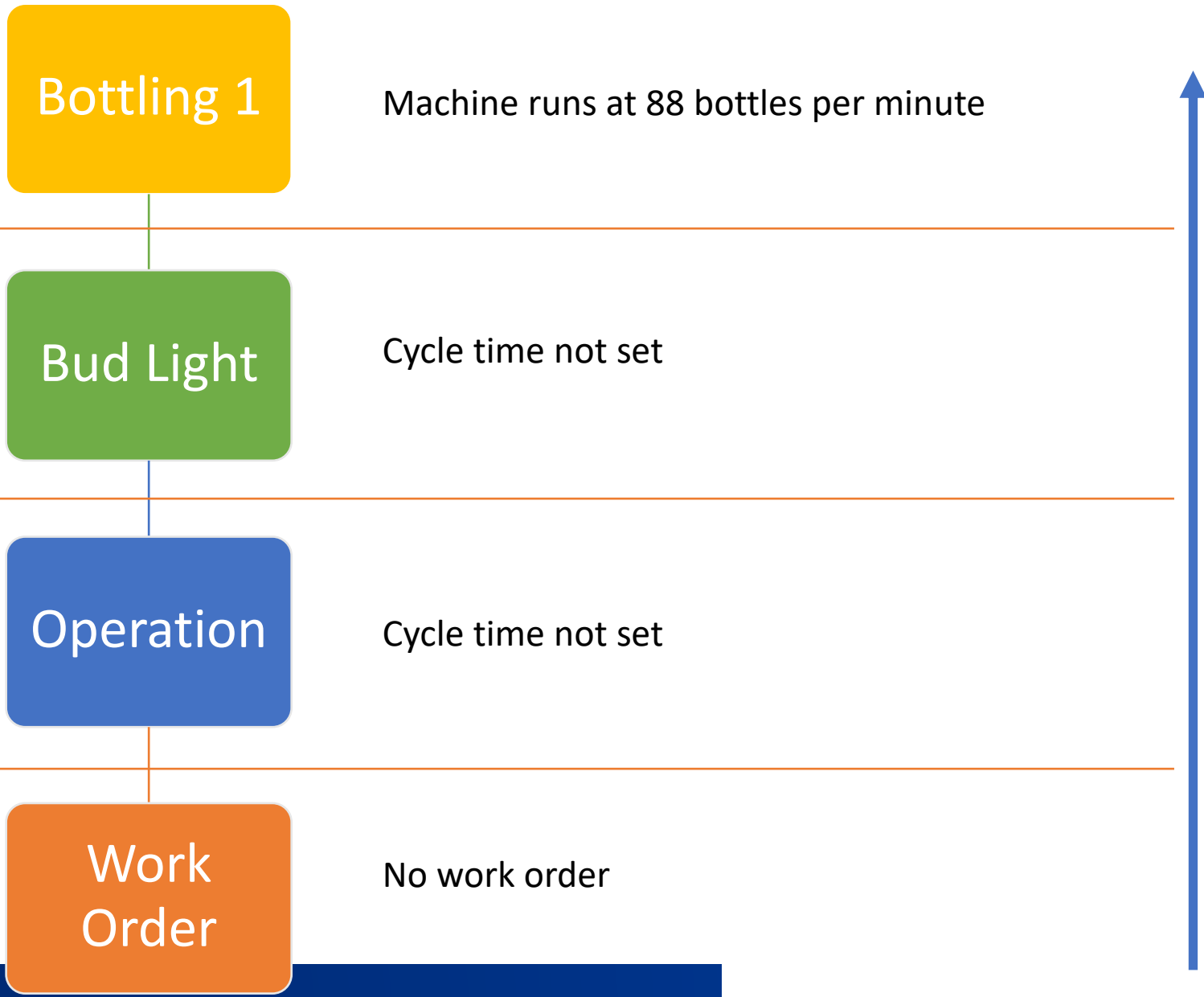
Cycle Time for a Single Work Order



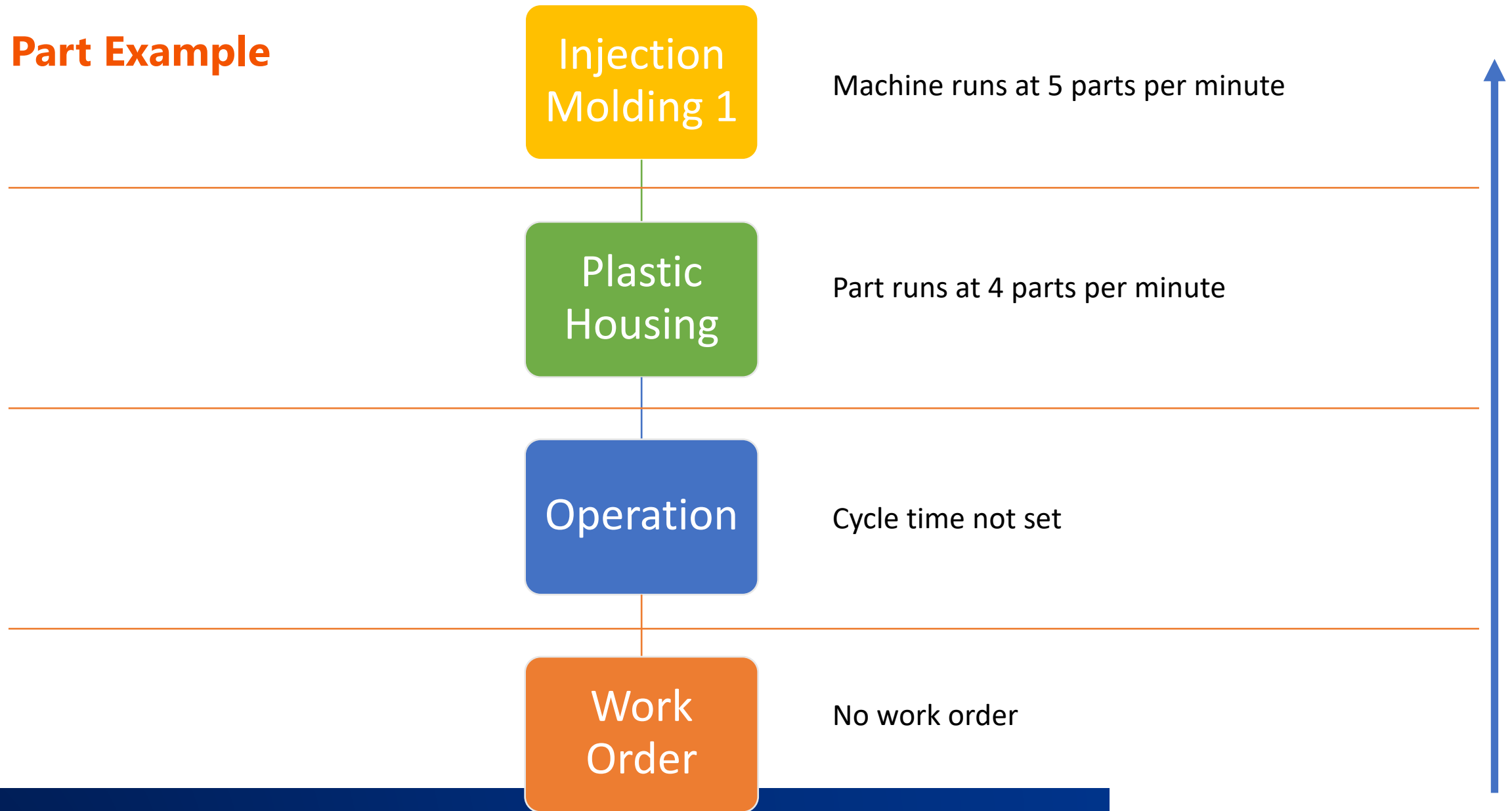
Machine Hierarchy Concepts

- Searches from bottom to top
- Each level is optional
- Reduces the amount of data you need to manage and enter

Machine Example



Part Example



Operation Example

Injection Molding 3

Plug

Operation

Work Order

Part runs at 34 parts per minute

On Injection Molding 3, Plug runs at 20 parts per min

No work order



Work Order Example

Injection Molding 3

Plug

Operation

Work Order

Part runs at 34 parts per minute

On Injection Molding 3, Plug runs at 20 parts per min

Work Order 93 has cycle time of 15 parts per minute



Operation Example

Mazak
Lathe

Flange

Operation

Work
Order

Work Order 93 has cycle time of 1 parts per hour

More Questions?