



Buyer's Guide for **SAP** Transportation Management

WHY A TMS IS CRITICAL FOR
YOUR BUSINESS



Q3 2022

TABLE OF CONTENTS

- Why a TMS is Critical for Your Business 04
- Key Factors & Misconceptions of TMS Adoption 05
- What is SAP TM? 09
- Capabilities & Benefits 14
- Building Your Business Case 20
- Summary 21
- Novigo Overview 22
- Packaged Solutions & Benefits 24
- Innovation at Novigo 25
- Next Steps 26



Foreword

Digitalization is the future of global supply chains. The onset of the global pandemic COVID-19 in 2020 significantly impacted the global economy as supply chains worldwide were hit by unprecedented disruption and uncertainty. Circumstances such as these have time and again emphasized the need for agile systems to manage disruptions proactively and build resilient supply chains across industries. Many Companies like Cisco & Boeing utilized Supply Chain Risk Management Systems after Tōhoku tsunami in 2011 devastated logistics supply chains. More and more organizations have turned towards implementing robust Supply Chain Risk Management Systems to manage disruptions. Adopting the correct Transportation Management System (TMS) that matches your business needs is a primary step towards effective supply chain risk management.

A TMS can respond to an immediate change effectively in several ways. TMS can improve end-to-end visibility on a complete supply chain network supported by data and establish standardized logistics processes and operations. This visibility and standard operating procedure can deliver flexible reporting tools to access real-time insights on the internal and external environment and accelerate decision-making. TMS can be beneficial to plan anticipated events and create new opportunities for improvement and enable optimal resource use. With this guide, we will explore few topics that will help build business cases for TMS.

Why a TMS is Critical for Your Business

The movement of goods across a supply chain happens in two courses - the physical movement of goods and its execution on a digital platform. Businesses globally are experiencing a paradigm shift in how supply chains function with greater emphasis on digitization and building resilience into the supply chain. With the physical movement of goods becoming more complicated due to current supply chain disruptions, changing consumer behavior, and the accelerated need for digitalizing supply chain operations, a Transportation Management System (TMS) is a must.

Transportation Management System helps businesses streamline the logistics processes in a supply chain. Transportation Management Systems are becoming increasingly sophisticated instruments, building resilient organizations that seamlessly thrive in expanding markets. They can effectively manage ongoing supply chain disruptions such as pandemics, natural calamities, political unrest, production hazards, cyber threats, abnormal consumer demand, and unexplained changes in consumer behavior.



TMS are game-changers. Not only do they transform the way freight gets from point A to point B, they also give supply chains a competitive advantage in the market.

Even before the pandemic by COVID-19, global supply chains were facing challenges to meet customers' requirements. The disruptions in the supply chain environment and the challenges led companies to revisit digital transformation in existing supply chain models. The COVID-19 crisis has been a catalyst for accelerated digital transformations in the supply chain.



Economic downturns are impossible to predict and sure as the sunrise. Build resilience now, because when the sun comes up, you'd better be moving.

Bubbles pop, downturns stop by McKinsey & Company



Key Factors & Misconceptions of TMS Adoption

The supply chain is a dynamic function that depends largely on external and internal factors. Just as the physical flow of goods is affected by these conditions the central system must also adapt to the internal and external changes. Some of these factors are:

Immediate effects of the pandemic

- Need for Supply Chain Resilience - E2E Visibility & Autonomous event management
- Accelerated Supply Chain Digitization initiatives
- Change in business dynamics e.g. switching to a remote workforce with the help of cloud-based solutions

Key External Factors

- Disruptions in the supply chain ecosystem
- Capacity fluctuations
- Significant growth in e-commerce
- Faster ROI in times of value acceleration
- Scalability to seamlessly integrate across multiple environments
- Changing consumer behavior
- Digitalization initiatives of competitors
- Customer Experience - Visibility on Tracking and Trace & ETAs
- Machine Learning
- Digital Freight Platforms

Key Internal Factors

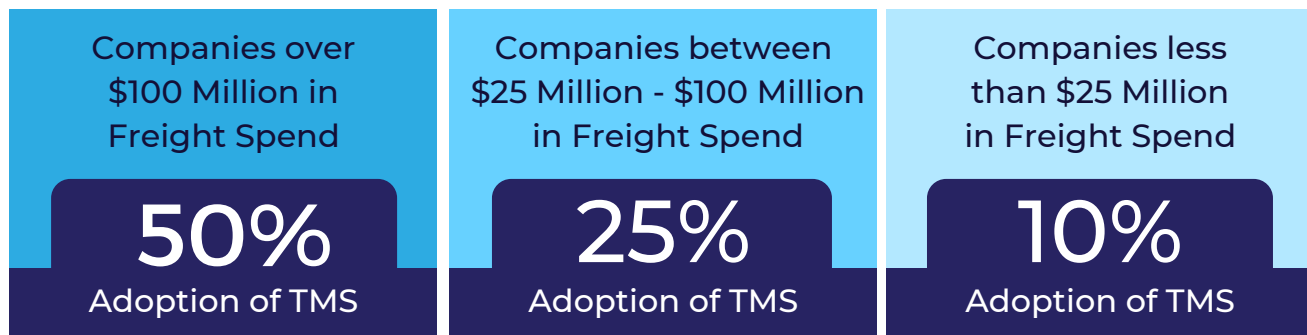
- Standard Operations Manual after Merger & Acquisition
- Growth in organization and supply chain networks
- Cost Optimization

TMS Technology is on the Rise

Gartner's Magic Quadrant for Transportation Management Systems, states that the latest Gartner forecast on TMS, worldwide, estimates that the market is expected to grow from \$1.32 billion to \$2.11 billion (from 2019 through 2024). That is a growth of 60% over a five-year period. In another report, Gartner has clearly stated that the yearly savings on TMS can be expected to be between 5% to 15%. Despite the driving factors above and the reports on savings on transportation spend, a recent survey conducted by Gartner states that the TMS adoption rate is only at 35% to 40%.

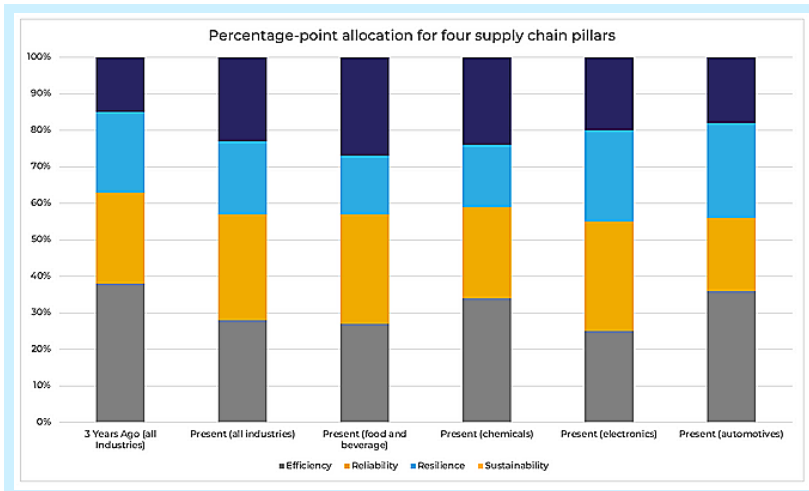


It further states that based on freight spend the following rates of TMS adoption apply to these companies



“ The most resilient logistics players are using this difficult environment to position themselves for future growth while remaining flexible enough to respond to shifting conditions. ”

Lessons from growth outperformers in logistics by McKinsey & Company



Source: Supply Chain Traceability Survey, July 2020,

N=131 (food and beverage n=33, chemicals n=30, electronics n=26, automotive n=27)

The TMS has evolved from a stand-alone internal software managed by the freight department into a more collaborative system connected to internal & external systems. A TMS can streamline supply chain operations, as products are converted from raw materials to finished goods through to the last mile of delivery to the final customer.



Choosing the right TMS will secure a holistic view over the supply chain and provide an overall reduction of transportation costs while improving service-level logistics patterns

Choosing the best TMS will allow you to better manage your business data, automate your business processes, empower your brand strategy while solving countless challenges and save time to build efficient system-to-system communication.

Factors Driving the Adoption of TMS	Capabilities enabled by TMS
Tedious manual processes	Digitalization in supply chains
Need for agile processes	Standardization that enables better adoption among businesses
The need for autonomous decision making	The application of AI and ML within TMS can enable enhanced decision making
Need for resilience in logistics	E2E Visibility & Autonomous Event Management
Convenience	Cloud Offerings enable a more remote workforce, being able to operate a TMS from anywhere and respond proactively to any crisis.

Common Misconceptions to implementing TMS



High cost of ownership

TMS implementations have for long been perceived as a capital-intensive exercise. But cloud solutions have reduced significant entry fees in the last five years and improved the cost-value ratio. This lowered entry fee has further removed barriers for small companies to adopt TMS.



Time to Value

TMS implementations can take significant time, but solutions like the Instant TM, a project accelerator by Novigo, enabled complete implementation within weeks or months. Novigo is the first company to complete SAP TM implementation within 12 weeks.



Usability Difficulty

TMS allows automation of processes that have effectively removed manual activities such as updating Excel files for shipment status, emails, and documentation management for real-time visibility and traceability.

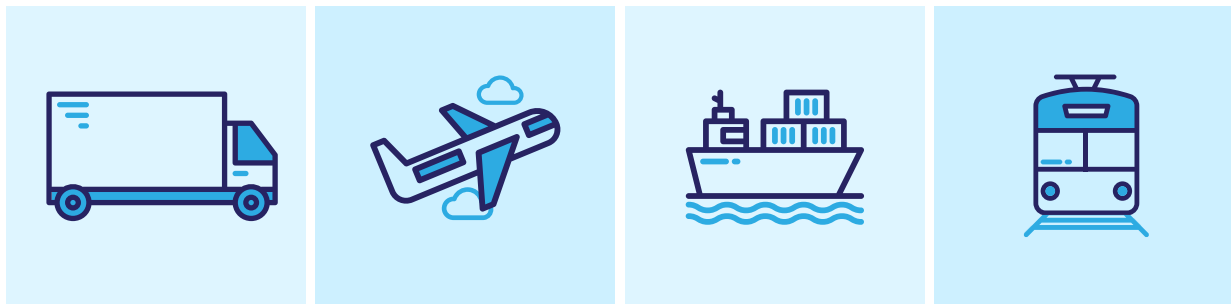
The industry is still mired in manual processes. Logistics & transportation teams still rely heavily on spreadsheets to run most of the operations manually. While digitization within the industry has caught up pace in the past few years and there has been evident advancement of innovative tech solutions to address business challenges, the pandemic seemed to accelerate digitalization efforts across the industry.

A recent survey by Bain & Company with the World Economic Forum shows that a new balance of priorities is emerging across industries and supply chain resilience and sustainability are increasingly becoming a priority among businesses. There is an evident shift from cost optimization and customer service holding primary importance towards building digitalized supply chains that are resilient, agile, transparent, and sustainable.

It is here that a TMS comes into play helping businesses transform from archaic processes to more efficient, sustainable, and advanced processes.

What is SAP TM?

SAP Transportation Management (TM) is a state-of-the-art, holistic transportation management solution that helps shippers, carriers, freight forwarders, and 3PLs, to plan, execute, manage, and optimize transportation-related activities.



- SAP TM is built to handle any mode of transportation including Road-LTL/FTL/Parcel, Air, Ocean, and Rail
- SAP TM offers business-relevant features and functionalities to cover any transportation scenario such as inbound, outbound, distribution, customer returns, milk runs, last-mile delivery, and more
- SAP TM can be hosted on-premise or on Cloud as a part of SAP's Digital Supply Chain Management landscape via SAP S/4HANA
- Seamless integration capabilities of SAP TM with your existing third-party service providers and legacy systems to build a connected TMS ecosystem around business preferences and needs

Core Areas Covered by SAP TM



Strategic Freight Management



Order Management



Transportation Planning



Transportation Execution



Freight Settlement



Analytics & Reporting



Order Management

- Manage transportation demand with real-time order-to-cash via Sales Orders and procure-to-pay processes via Purchase Orders.
- Seamless integration with Stock Transfer Orders, Scheduling Agreements, and Deliveries.
- ERP agnostic / can connect to multiple ERP systems

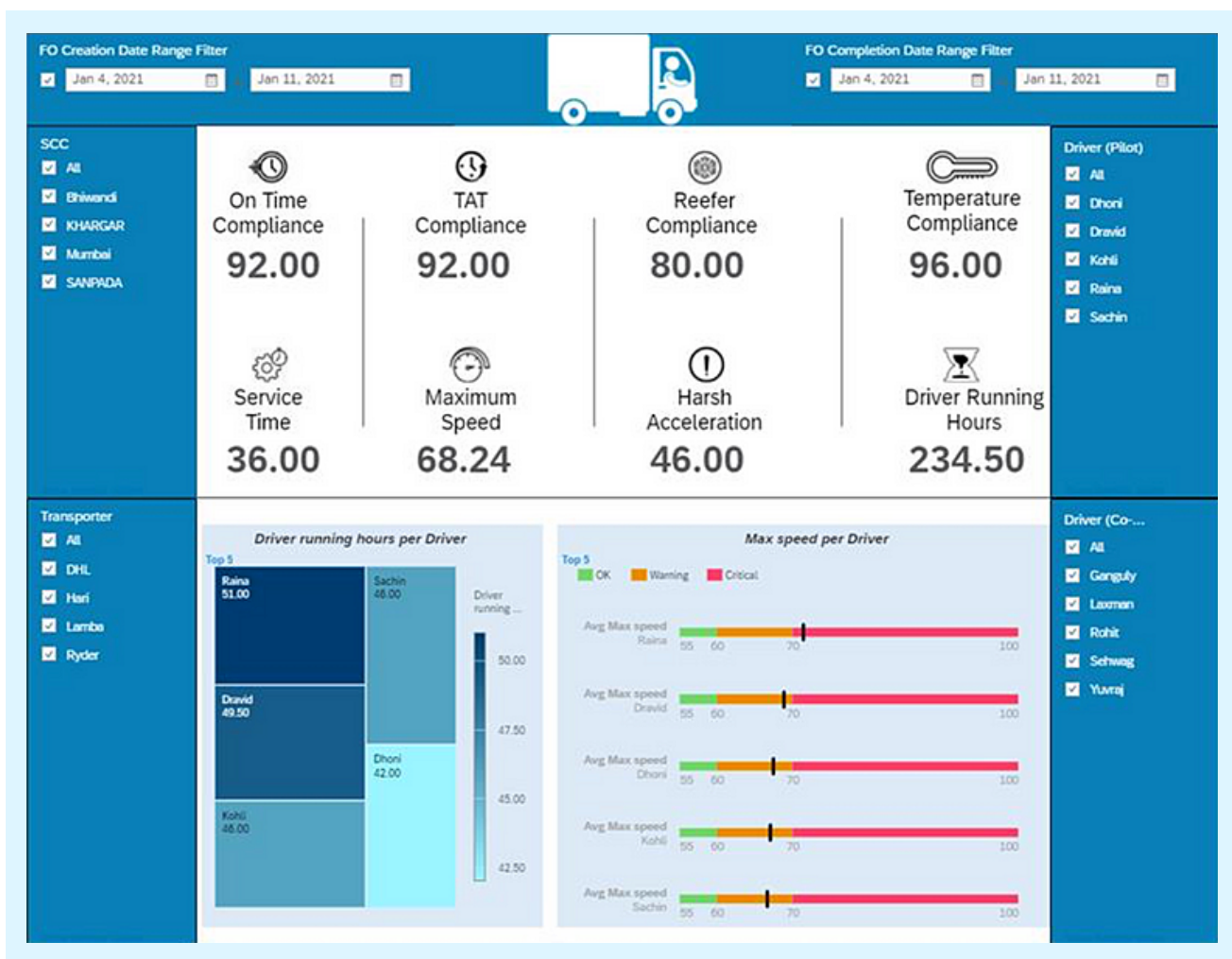
Transportation Planning & Optimization

- SAP TM's Planning & Optimization capabilities allow optimal routing by handling various products/schedules/incompatibilities to meet business requirements.
- It can plan fleet/resources and transports handed over to a carrier.
- It is visually backed by:
 - Load Planning to monitor vehicle utilization and loading strategies
 - Maps for planning and detailed understanding of routes taken by transportation resources.



Tendering and Carrier Collaboration

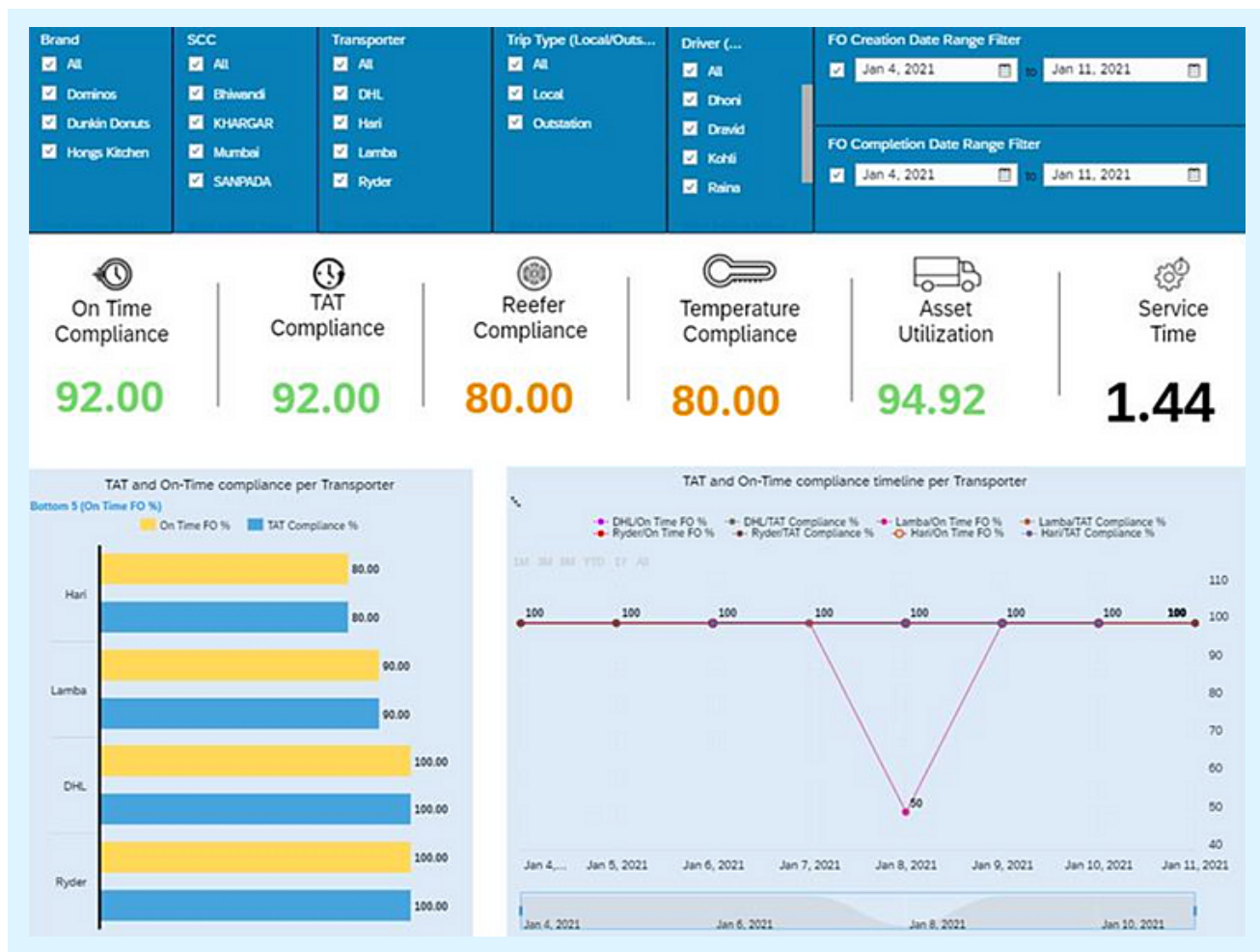
- Handles peer-to-peer (tendering to carriers one at a time) or broadcast (tendering to multiple carriers at once) tendering with customizable visibility of information.
- Enables communication with external partners/carriers in necessary formats such as emails, SMS, and other notification forms as desired.





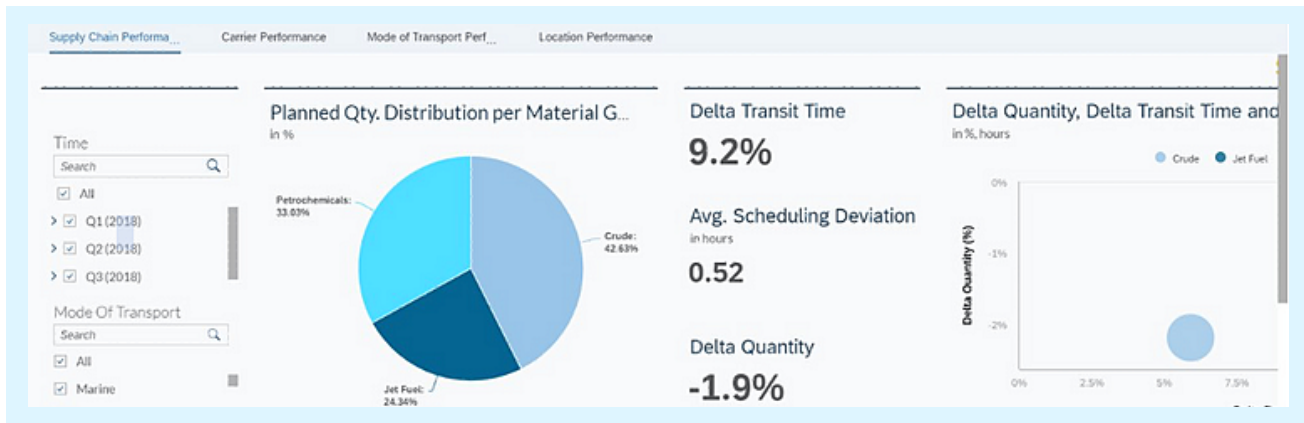
Execution

- SAP TM allows manual and automated Tracking & Tracing of shipments by monitoring and reporting events in real-time.
- SAP TM can trigger actions/alerts based on reported events. It makes use of telematics integration to keep track of the shipments as needed.
- Seamless integration with Extended Warehouse Management (EWM) allows businesses to integrate warehouse processes with transportation processes.



Strategic Freight Management

- SAP Transportation Management helps business partners (Shippers/Logistics Service Providers) to request rate quotations, evaluate responses, and award business to carriers.



Analytics

- Analytics within SAP TM provides businesses with real-time, precise, and actionable insights that significantly aid critical decision-making.
- It is powered by Machine Learning that provides automated insights to help identify key business drivers.
- Real-time collaboration with data insights using SAP Digital Boardroom.



Capabilities & Benefits

Cost Reduction & Enhanced Operational Performance

Strategic Freight Management	Order Management	Transportation Planning	Transportation Execution	Charge Calculation & Settlement
<ul style="list-style-type: none"> Carrier Collaboration Freight procurement Award and manage carrier 	<ul style="list-style-type: none"> Multi system Integration SO/PO/STO Freight Unit Building Package building 	<ul style="list-style-type: none"> Optimized Planning Automatic Carrier Selection 3D Load Planning 	<ul style="list-style-type: none"> Transport Documents Tracking & Tracing Event based 	<ul style="list-style-type: none"> Charge Calculation Settlement integration Cost Distribution

Business Benefits

<p>Optimal Procurement of freight capacity for multiple modes</p> <p>Save on their transportation budget using sophisticated freight procurement solution</p> <p>Measure Compliance on Agreements</p>	<p>Improve the efficiency of order and process management</p> <p>Generate dynamically optimized routing proposals based on business rules</p> <p>Minimize freight costs</p> <p>Enhance customer service</p>	<p>Improve resource utilization and carrier selection to reduce transportation costs</p> <p>Handle huge volumes of data with automated planning processes</p> <p>On the fly drag and drop planning</p> <p>Select the most cost-effective modality easily</p> <p>Combine decentralized local business views to identify synergies</p>	<p>Improve cargo handling</p> <p>Achieve faster, more dynamic, and responsive logistics execution</p> <p>Reduce shipping costs with a streamlined process and maximized efficiency</p>	<p>Improve accuracy and transparency with automatic transportation cost calculation</p> <p>Integrate transportation management and billing</p> <p>Increase invoice accuracy</p>
-------------------------------------------------------------------------------------------------------------------------------------------------------------------------------------------------------	-------------------------------------------------------------------------------------------------------------------------------------------------------------------------------------------------------------	--------------------------------------------------------------------------------------------------------------------------------------------------------------------------------------------------------------------------------------------------------------------------------------------------------------------------------------	----------------------------------------------------------------------------------------------------------------------------------------------------------------------------------------	---------------------------------------------------------------------------------------------------------------------------------------------------------------------------------

Total Freight Spend	Human Effort (Savings in FTE%)	Qualitative improvements																				
<table border="0"> <tr><td>Freight procurement</td><td>5 - 25%</td></tr> <tr><td>Shipment consolidation</td><td>5 - 20%</td></tr> <tr><td>Network optimization</td><td>3 - 12%</td></tr> <tr><td>Invoice verification</td><td>2 - 6%</td></tr> <tr><td>Analytics</td><td>2 - 10%</td></tr> <tr><td>Risk avoidance</td><td>2 - 5%</td></tr> </table>	Freight procurement	5 - 25%	Shipment consolidation	5 - 20%	Network optimization	3 - 12%	Invoice verification	2 - 6%	Analytics	2 - 10%	Risk avoidance	2 - 5%	<table border="0"> <tr><td>Transport planning</td><td>5 - 20%</td></tr> <tr><td>Visibility</td><td>5 - 10%</td></tr> <tr><td>Invoice verification</td><td>10 - 70%</td></tr> <tr><td>Analytics</td><td>5 - 20%</td></tr> </table>	Transport planning	5 - 20%	Visibility	5 - 10%	Invoice verification	10 - 70%	Analytics	5 - 20%	<ul style="list-style-type: none"> Customer satisfaction Risk avoidance Compliance Reduced inventory Improved cash flow
Freight procurement	5 - 25%																					
Shipment consolidation	5 - 20%																					
Network optimization	3 - 12%																					
Invoice verification	2 - 6%																					
Analytics	2 - 10%																					
Risk avoidance	2 - 5%																					
Transport planning	5 - 20%																					
Visibility	5 - 10%																					
Invoice verification	10 - 70%																					
Analytics	5 - 20%																					



Mode and Route Optimization

Transportation costs account for a significant share of total logistics costs within supply chains. Therefore, businesses must reduce overall transportation spend while enhancing process efficiency and transparency. SAP TM's Vehicle Scheduling and Routing (VSR) optimizer engine help companies realize these objectives through optimized shipment planning while considering the gamut of constraints applicable to transportation. In a survey by ARC Advisory Group, respondents indicated freight savings of approximately 8% using a TMS application. The VSR optimizer can help customers realize significant cost savings through shipment consolidation and optimized freight capacity planning, resulting in a more substantial ROI.

Optimizer Benefits:



Reduces freight cost & helps in optimal capacity utilization



Reduces transportation distance through VSR (Vehicle Scheduling & Routing) Optimizer



Carrier Selection - Carrier ranking considering costs, business shares & allocations

Real-time Tracking and Tracing Capabilities

Visibility in a supply chain is of paramount importance. Therefore, robust shipment tracking and tracing capabilities are essential to delivering excellent service levels. Throughout a shipment lifecycle, starting from the shipment pick-up from origin to delivery at the destination, SAP TM guarantees visibility into different shipment events. Through tight integration with SAP Event Management (EM), customers/carriers can report shipment events and set up alerts for events if they don't receive alerts within a stipulated time. Thus, the system alerts decision-makers automatically to avoid any disruption.

SAP EM can communicate with external formats such as EDI, idocs, and XMLs, making SAP TM more flexible in receiving and updating events in real-time.



By utilizing SAP Event Management and the cloud offering - Global Track & Trace (GTT) option within SAP Logistics Business Network (LBN), customers can get real-time transparency of their transportation processes. Tracking products and process documents such as sales orders, purchase orders, outbound and inbound deliveries via GTT make it easier for customers to understand how their execution processes function. Real-time insights into the availability of materials significantly reduce supply chain risks & can be shared with relevant stakeholders depending on the specific business needs. The tight integration of SAP TM with SAP EM and SAP GTT (in the roadmap) provides granular supply chain visibility that businesses need.

Automation of Transportation Processes and Efficiency Gains

Supply chain businesses grapple with obsolete processes and siloed platforms leading to increased inefficiencies. SAP TM allows automation of business processes that enable connected supply chain networks with increased business productivity, improved end-to-end visibility, and reduced errors creating greater cost savings across the value chain.

Here are several ways that SAP TM automates the business processes:

- **Automated Carrier Selection:** Based on the transportation network, the planners can see different carriers and decide on carrier selection.
- **Batch Jobs:** A batch job is a program to process large volumes of data scheduled to run in the background without any user intervention.
- **Output Management:** With SAP TM, businesses can automate shipping document creation for House Bill of Lading, Master Bill of Lading, labels, etc.
- **IoT (Internet of Things):** IoT further enhances SAP TM efficiency by seamlessly integrating IoT sensors' data that allows fleet managers to have visibility into the exact truck locations and environmental conditions, i.e., cold-storage, etc. Such real-time visibility data equips businesses to make data-driven decisions in cargo management.
- Fleet managers can monitor drivers' routes, check idle times, and take actions if necessary.

Seamless integration with Third-Party Platforms

With the new cloud offering SAP Logistics Business Network (LBN) and its seamless integration with SAP TM, the different supply chain players - shippers, carriers, freight forwarders, customers, etc. are unified on a single platform for logistics collaboration. With the data flowing seamlessly between SAP TM and LBN, shippers and carriers can engage in tendering, negotiating on the rates. The carriers can also report different events from LBN, with those events then flowing back to SAP TM, allowing shippers to have a consolidated view of the reported events, and take actions if necessary. At Novigo we have partnered with the best global supply chain visibility providers:



project44 is a global leader in supply chain visibility, offering powerful and secure API integrations that connect 3PLs and shippers with carriers in real-time, to enhance and optimize visibility across supply chains globally.



UberFreight is an advanced platform that brings together shippers and carriers. The connection between SAP TM and Uber Freight via LBN allows wide access to different carriers and their associated rates.



SMC3 has more than 85 years of experience supporting the complex niche of LTL transportation, SMC3's best-in-class suite of solutions fuels TMS applications with unrivaled LTL analytical capabilities and shipment visibility data.



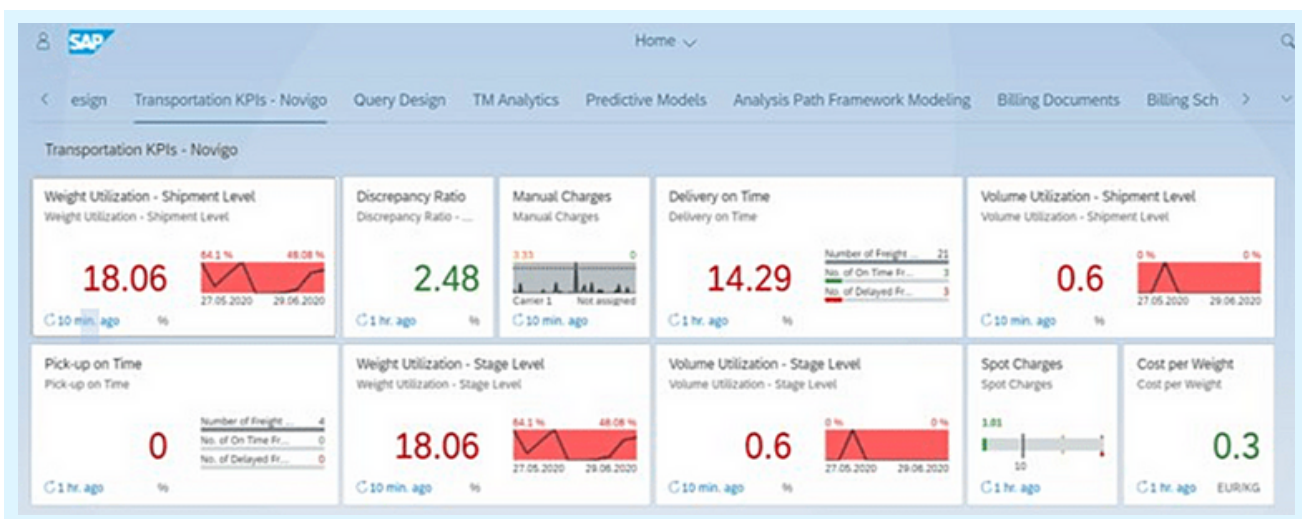
Sleek Technologies, the leader in freight procurement automation, helps shippers uncover resilience, sustainability, and cost reduction opportunities to always deliver goods on time, and at fair market price. With seamless SAP integration, loads are dynamically matched to compliant carriers through an AI-powered, self-regulated freight marketplace that eliminates the need for brokers and RFPs. And with 100% transparency, shippers are empowered to make smarter, data-driven decisions when it comes to optimizing their carrier network resulting in an average of 17% truckload savings and 97%+ average on time delivery.

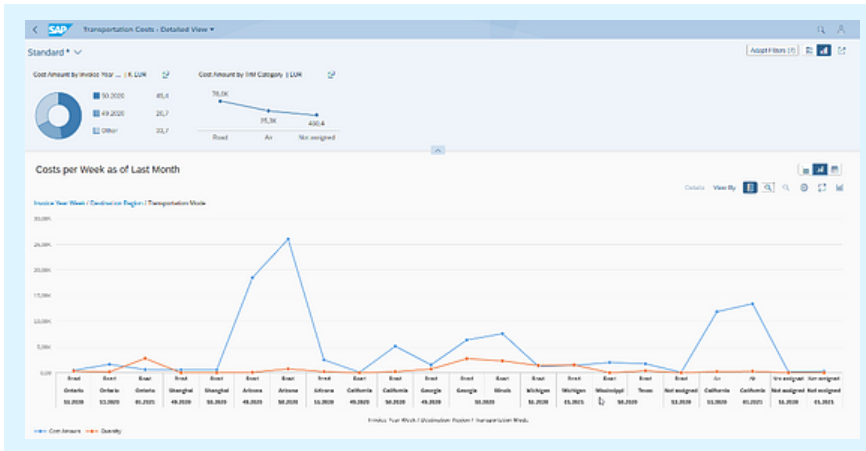
Data-driven decision-making through Analytics and Reporting Capabilities of S/4HANA

The superior analytical capabilities of S/4HANA allow using out-of-the-box Fiori applications for analytics. These applications help the customers keep a check on the pulse of the business. Customers can view the results within each of the applications to gain insights into process health and performance. Some of the analytical applications include:

- Order Execution Monitoring
- Business Share Analysis
- Tendering Analysis
- Order Quantity Analysis

Analysis can be a high-level one or at a granular level. One such example is below, where we see the gross weight transported during different weeks of the year.





More TM Highlights

SAP TM allows planners to visualize the results of loading shipments into vehicles during the planning of shipments. This provides a 3-D view of resources & allows planners to visualize the loading and stacking inside vehicles. SAP TM allows customization of load planning such as changing the product's dimensions, dimensions of the truck, the arrangement of packages inside the truck, etc.

Planners can also leverage the incompatibilities in SAP TM by defining it on multiple levels. For example, temperature-sensitive products or perishables should only be transported in reefer trucks/containers. It is possible to define incompatibilities such as not transporting edible items with hazardous products on a product-by-product level. This enables smarter planning in SAP TM.

SAP TM capabilities include package building that allows planners to build packages while creating shipments and schedule integration with third parties such as OAG, allowing planners to consider the availability of different air carriers during planning shipments.



Holistic Approach to Building a Business Case

A business case provides the foundation to ensure your implementation will deliver real value to your business operations. To do so requires a comprehensive understanding of your challenges of today and how the solution will solve problems with current operations. A successful business case will address current needs and measure the value against defined metrics.

Define Requirements



Use an interdisciplinary change management team to review operations and determine business requirements and KPIs at the project's onset

Identify Gaps



Identify gaps and pain points in existing processes and define a viable solution

Quantify Savings

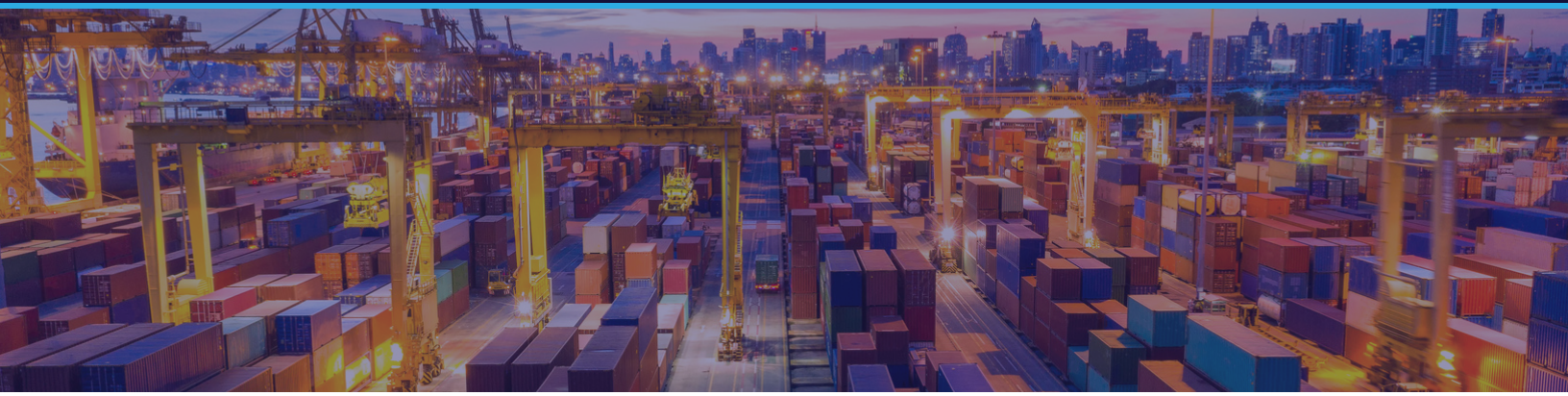


Quantify direct savings & ROI as well as indirect benefits

Engaged Team



Build consensus and buy-in. Strong collaboration from business stakeholders enables high engagement and a better business outcome



Summary

Whether your company is tackling manual contract negotiations, needs accurate shipment visibility, or is struggling to reduce freight spend, a TMS is a comprehensive solution.

It will :

- integrate your company processes,
- assure complete control over your logistics execution operations
- reduce transportation complexity,
- increase productivity,
- improve end-to-end visibility, and
- maximize return on your transportation spend.

Relying on manual spreadsheets and obsolete systems might put your company at risk. Leaders of logistics and supply chain are standardizing their processes and operations, allowing them to accelerate decision-making with real-time insights and increasing competitive advantage.

Digital Transformation requires an expert backing up your efforts in implementing a complete digital supply chain. As global leaders of SAP Digital Supply Chain implementations (SAP TM, EM, LBN, EWM & GTT), we have enabled businesses worldwide to derive exceptional customer experience through streamlined business processes accelerating their digitization efforts.

By providing leading supply chain domain expertise, we ensure the most effective approach to meet your business objectives. We validate business processes and carefully analyze your requirements to guarantee a successful and smooth implementation. We assure efficient coordination, facilitating the identification of risks with well-structured training and support.

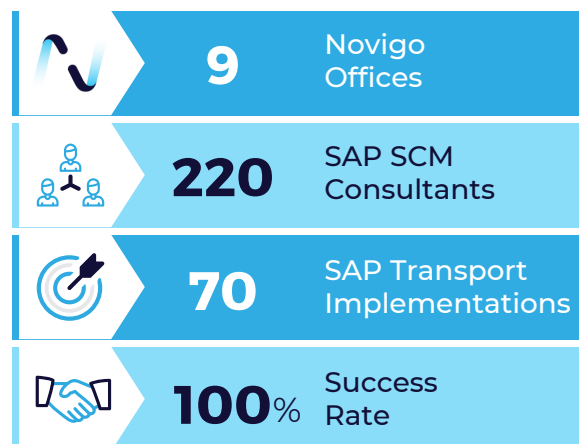
For a discovery session and more details on how Novigo can transform your supply chain, [CLICK HERE](#).



Novigo Overview

Novigo is a global leader for supply chain execution consulting services enabling clients globally to uncover the benefits of SAP's Digital Supply Chain Platform. As global leaders of SAP DigitalSupply Chain implementations (SAP TM, EM, LBN, EWM & GTT) through offices in North America, EMEA, Asia, and Australia, Novigo has delivered the most SAP Supply Chain Execution / TM Implementation Projects among all SAP service partners. Novigo has a proven track record of being the first Company to implement SAP TM within 12 Weeks and the first Company to implement SAP GlobalTrack & Trace (SAP GTT).

- Established in 2008
- Sole focus on SAP SCM Application Consulting Services
- Pioneers in SAP Transportation domain
- Leader for SAP SCE (TM, EWM, EM, LBN, GTT) implementations
- Prime partner for shippers & LSPs
- More SAP TM/EM engagements worldwide than other partners
- Global Service Delivery capability
- Local presence in North America, Europe, Australia, & India



Our value-driven approach towards Digital Transformation Services and our track record of **100% successful project delivery** make Novigo the partner of choice. Novigo is committed to delivering exceptional service and support to its customers to ensure supply chain agility and better preparedness for the future. Novigo's focus remains on identifying new ways of running smarter supply chains by uncovering the potential in business process improvement, enabled by SAP Digital SCM Technology, and delivered by empowered and enabled people. For more information, please [CLICK HERE](#).

Novigo Industry Project Highlights

<p>Fast Moving Consumer Goods</p>	<p>Chemical & Energy</p>	
<p>Logistic Service Providers</p>	<p>Manufacturing & Construction</p>	<p>Electronics & Consumer goods</p>
<p>Automotive</p>	<p>Pharma</p>	<p>Steel</p>

Novigo and SAP enable the world's leading enterprises to digital maturity.

- We can help your organization assess its digital supply chain maturity compared to others in your industry.
- We identify advantages and opportunities leveraging our best practices and domain expertise.
- We guide our clients with technology solutions to support your business of today and your vision of tomorrow for an intelligent, sustainable, and resilient supply chain.

We can build your organization a business case starting with a discovery workshop and ROI calculation report. Contact us today, [CLICK HERE](#).

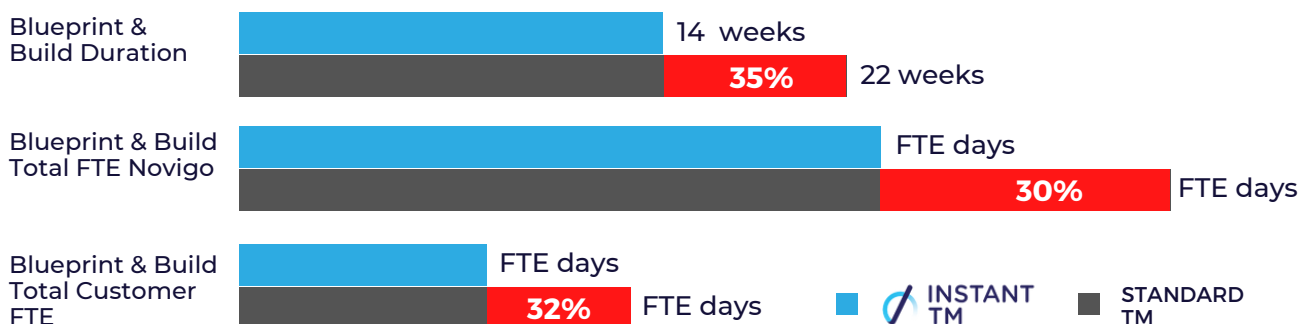
Integration of the newest technologies such as:

<p>Telematic & Visibility Integration</p>	<p>Rate Providers</p>	<p>GIS Integration Distance, Duration, Route & Map</p>
<p>Customs Filings</p>	<p>Middleware</p>	
<p>Sustainability</p>	<p>Blockchain & IoT</p>	
<p>AI Chatbot</p>		

Novigo Packaged Solutions

In the past, implementations may have taken a significant amount of time to complete. However, the Instant TM Project Accelerator by Novigo has enabled complete implementation within weeks or months. **We are the first company to complete an SAP TM implementation within 12 weeks.**

Real-life implementation example | Instant TM vs. Standard TM



Packaged Offerings Solutions

Instant TM value-add to your TM implementation while assuring quality and reducing time & materials.



Best Practices

Leveraging process improvements from over 70 implementations



Less Risk

Using predefined test scripts, documentation and lessons learned of previous implementation



Optimized use of Resources

Shorter implementation and prepared templates results in fewer resources needed



Reduced Costs

Overall savings of implementation costs up to 25%



Quicker Go-Live

Shorter preparation, blueprinting and build by implementing pre-defined scenario



Faster ROI Realization

Gain a faster Return on Investment due to quicker go-live and lower costs

Innovation at Novigo

The transition to the digital core brings complex challenges for any business but great rewards for those that adapt. Whether it is logistics planning, transportation, risk management, visibility, analytics, or anything in between, we can help you design, implement, and own a solution that elevates your digital supply chain. The word Novigo means innovation in the auxiliary language Esperanto. Innovation marks a cornerstone of our philosophy. Embedded into a holistic approach to drive business benefits realization, we deliver deeper solutions and services for SAP customers to address today's challenging supply chain problems. Some of our latest innovations and tools are summarized below. These aim at enhancing and potentiate SAP TM core functions and much more.



Smart Track App

Fiori based easy Shipment Tracking App on personal Smart Device



Instant TM

A pre-configured, flexible SAP TM template solution enabling acceleration while reducing cost and risk



Transportation Portal

A single point of entry for shippers, suppliers, customer service representatives, and carriers



Tendering App

An SAP TM FIORI solution for awarding the tender to the best carrier, after the evaluation of all responses



Carrier Ranking Report

A tool that ranks carriers based on business preference and cost



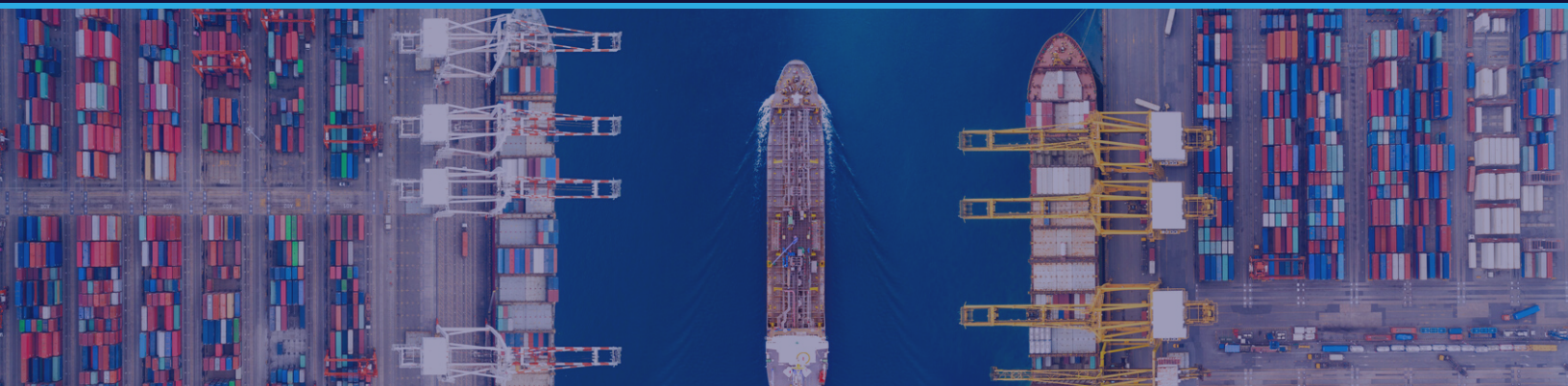
Novigo Last-Mile Suite

Role-based apps, control tower, and dashboards provide complete planning, inventory management, and visibility for last-mile delivery



Novigo Carbon Management Solution

Calculate and produce accredited CO2e reports of the transportation process from SAP TM



Next Steps

To further explore if SAP TM is the right solution for your business. Please reach out for a consultation session with a Novigo expert.

We can help you build a business case starting with a discovery workshop, ROI analysis, and solution demo to fulfill your digital supply chain transformation needs.

[Register Here](#) or reach out using the contact info below.

USA

Novigo Inc.
3 E 3rd Avenue, Suite 200,
San Mateo, CA 94401

Contact
+ 1 650 249 3200

Germany

Novigo GmbH
Altrottstr. 31
69190 Walldorf

Contact
+ 49 6227 733580

Australia

Novigo Pty Ltd
300 Queen Street Level 20
Brisbane, QLD 4000

Contact
+ 1 650 249 3200

Canada

Novigo Consulting
Canada Inc.
3 Place Ville Marie Suite
400, Montréal (Québec)
QC H3B 2E3

Contact
+ 1 650 249 3200

Spain

Novigo Iberia S.L.
Paseo de la Castellana
43, Oficina 1-120
28046 Madrid

Contact
+ 34 673 006 089

India

Novigo Partners Private
Limited
WeWork Salarpuria
Magnificia, Tin Factory,
78, Old Madras Road,
Mahadevapura, 560016

Contact
+ 91 636 489 6059