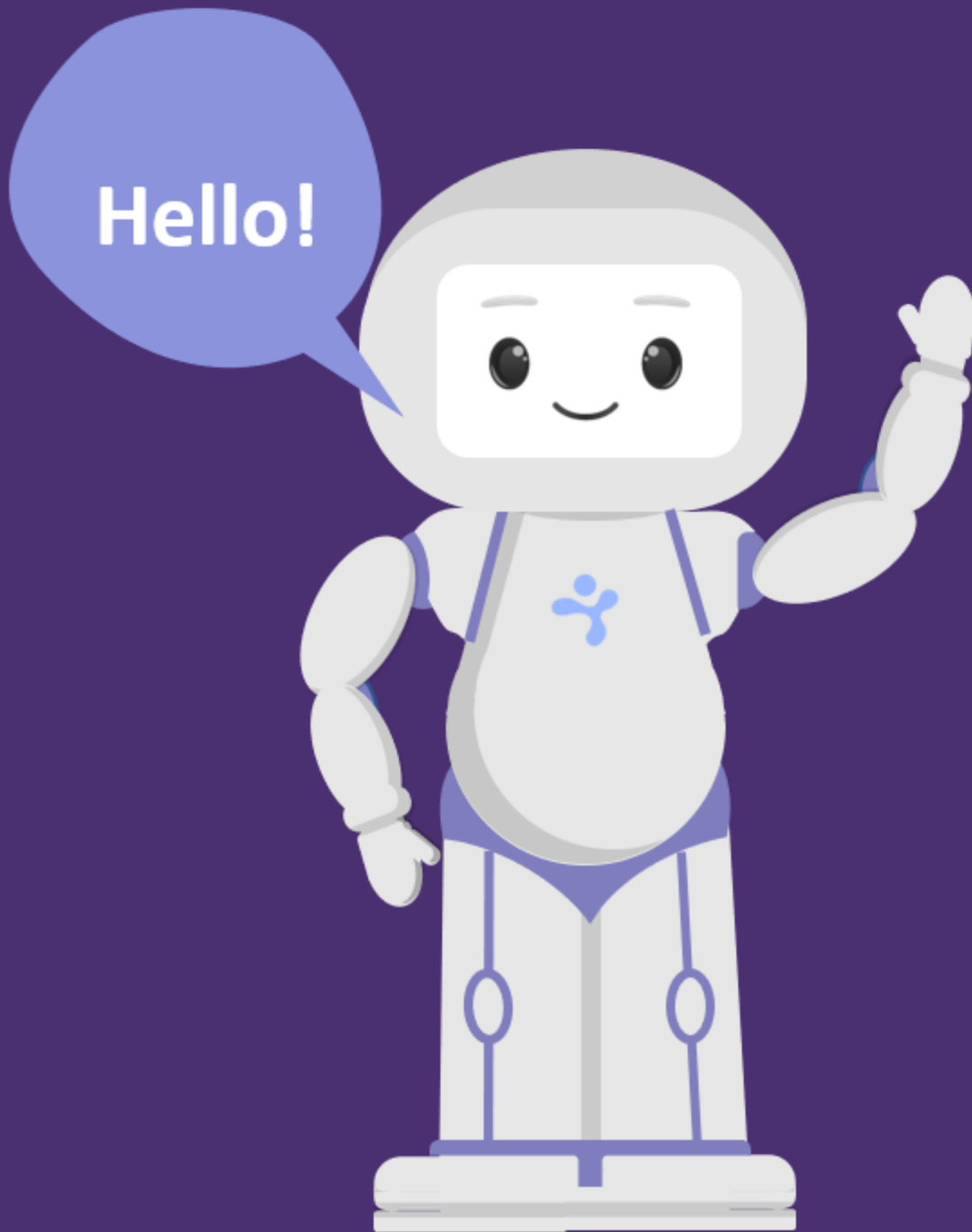


When to greet

Adapted book



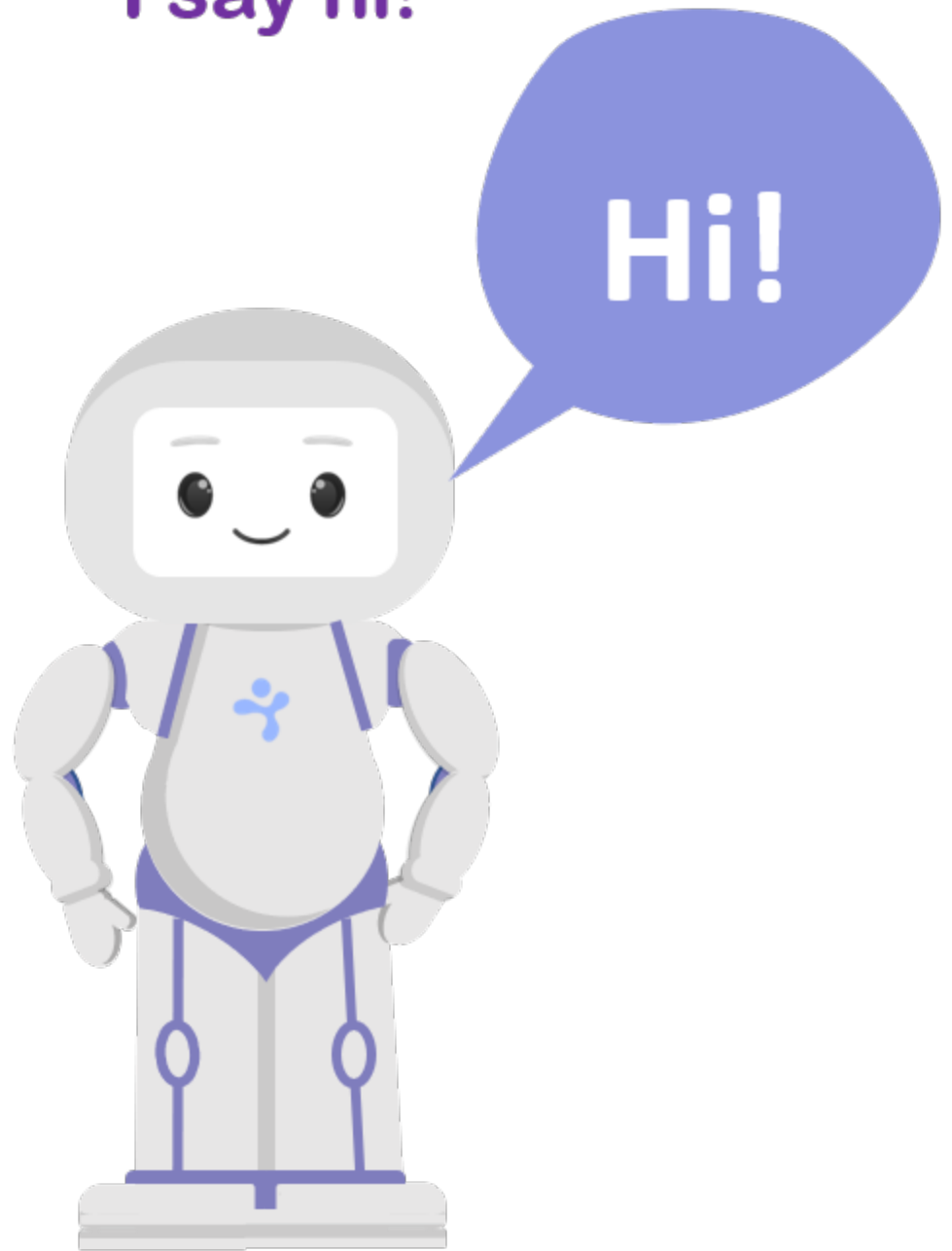
Teaching greeting to learners with autism

www.luxai.com

Set up instruction:

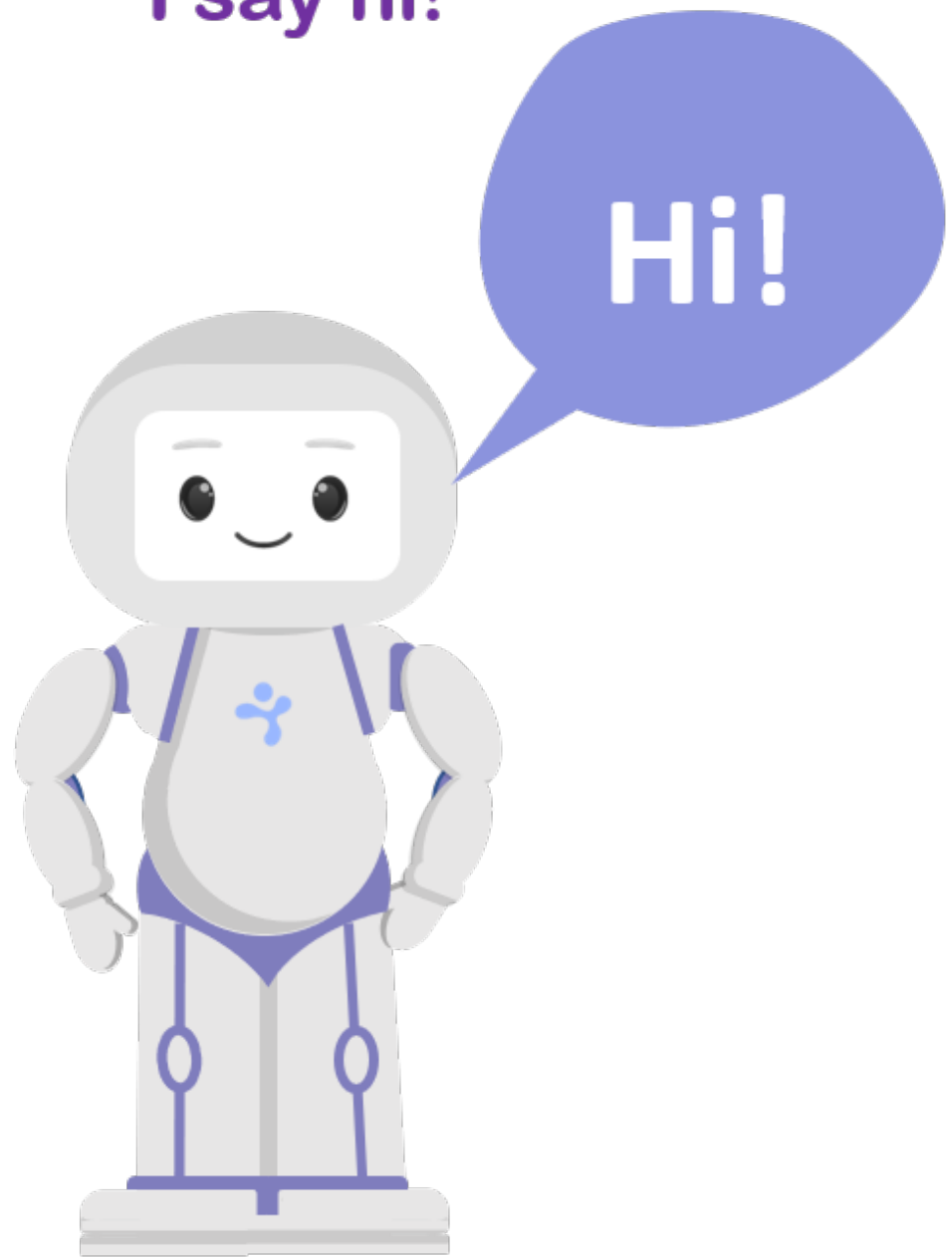
1. Copy the pages
2. Cut the correct/wrong and yes/no cards
3. Ask the learner to help the robot to find the correct answer.
4. Read the situations and ask the learner to choose one answer and match the answer card with the blank space.

when I see my teacher for the first
time in the day,
I say hi!



Correct or
wrong

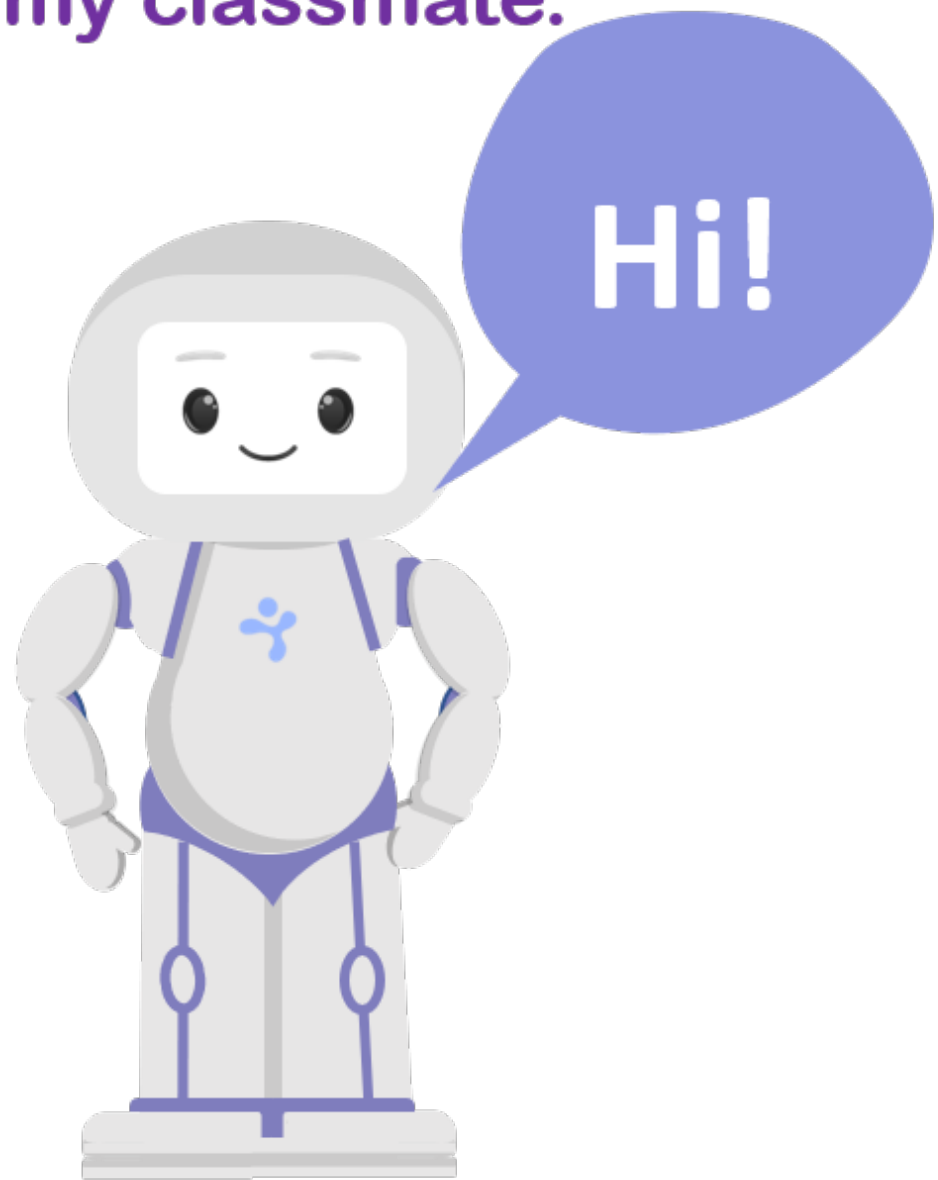
When I see my classmate for the first
time in the day,
I say hi!



Correct or
wrong

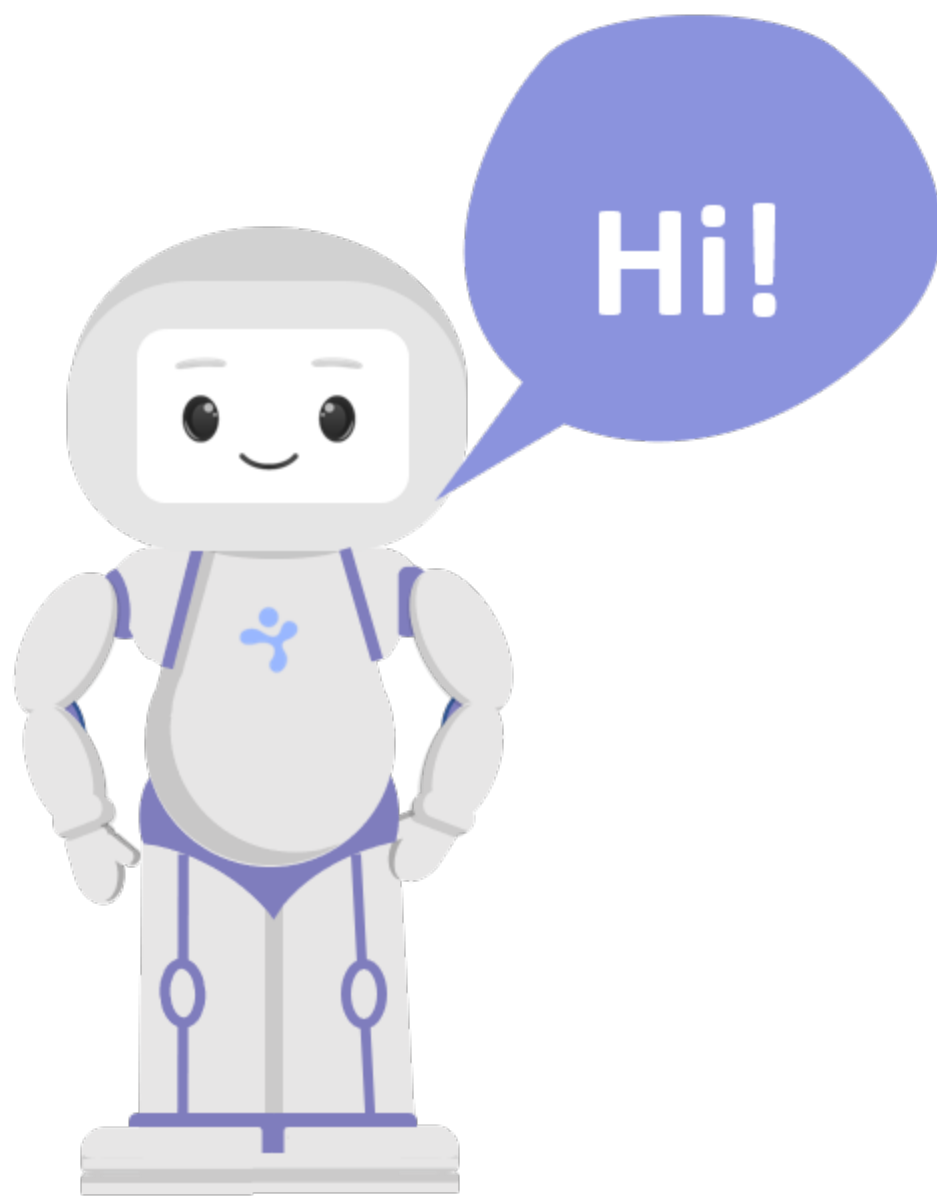
I go out of the classroom to go to the bathroom.

When I come back, I say hi again to my classmate.



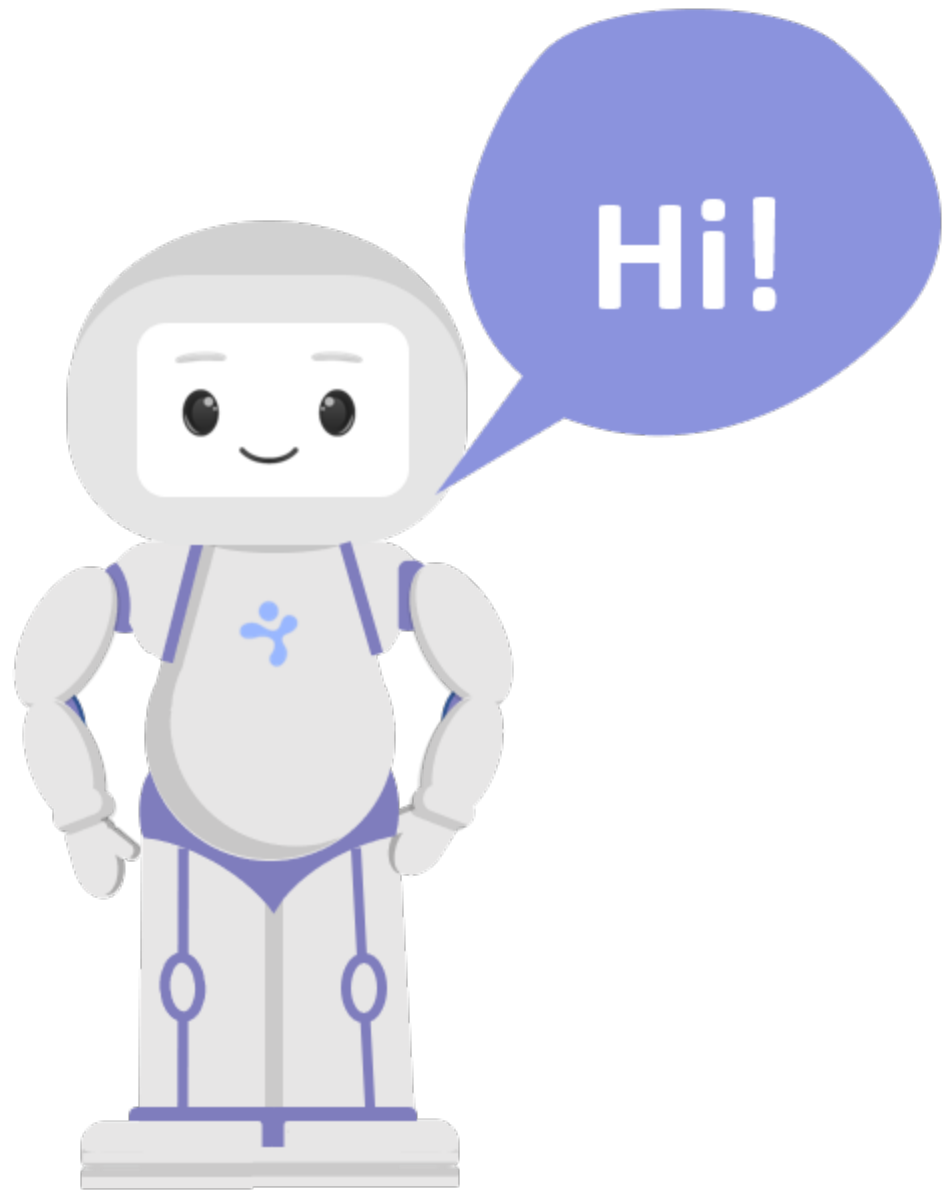
Correct or
wrong

I go to the playground and I see a neighbor there. I say Hi.



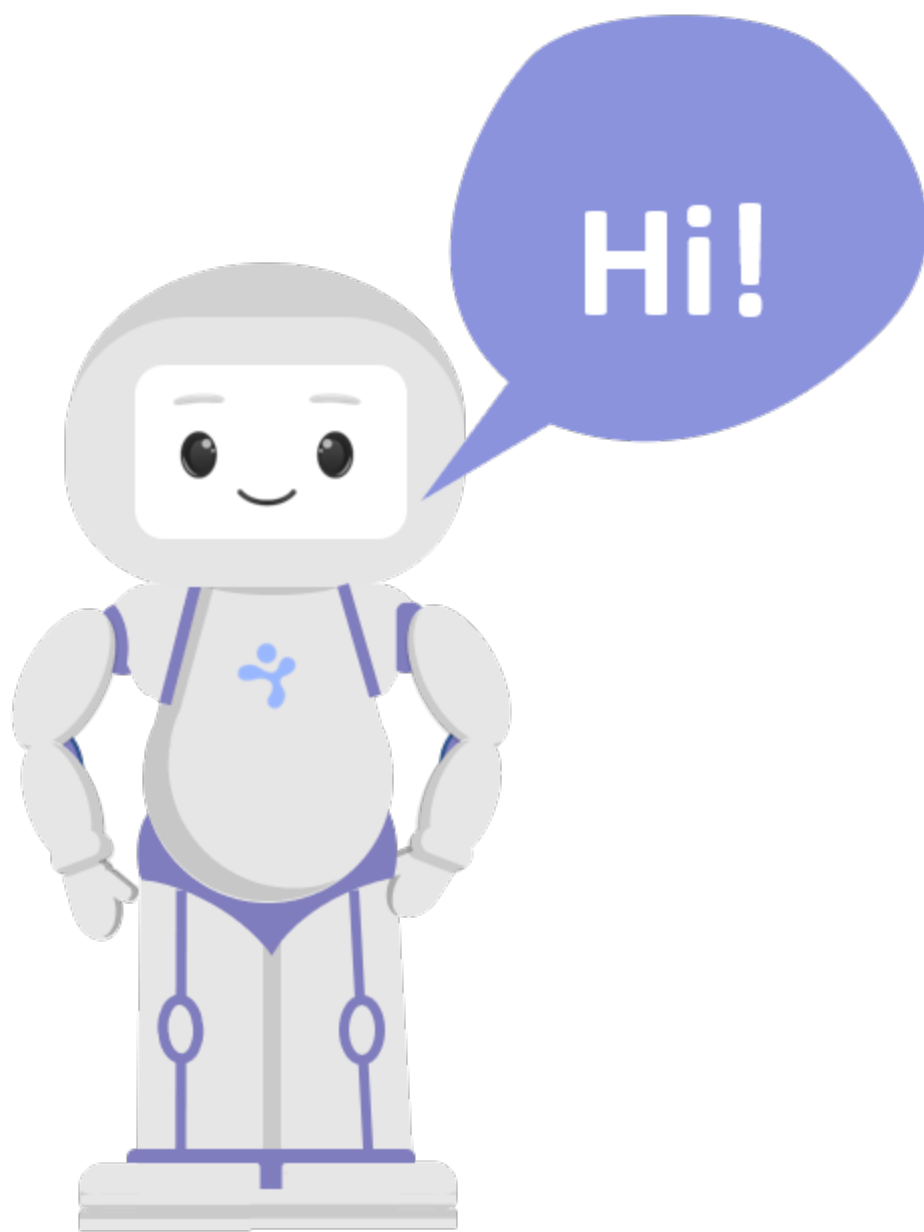
Correct or
wrong

I go to a shop with my parents.
I say hi to the person working in the
shop.



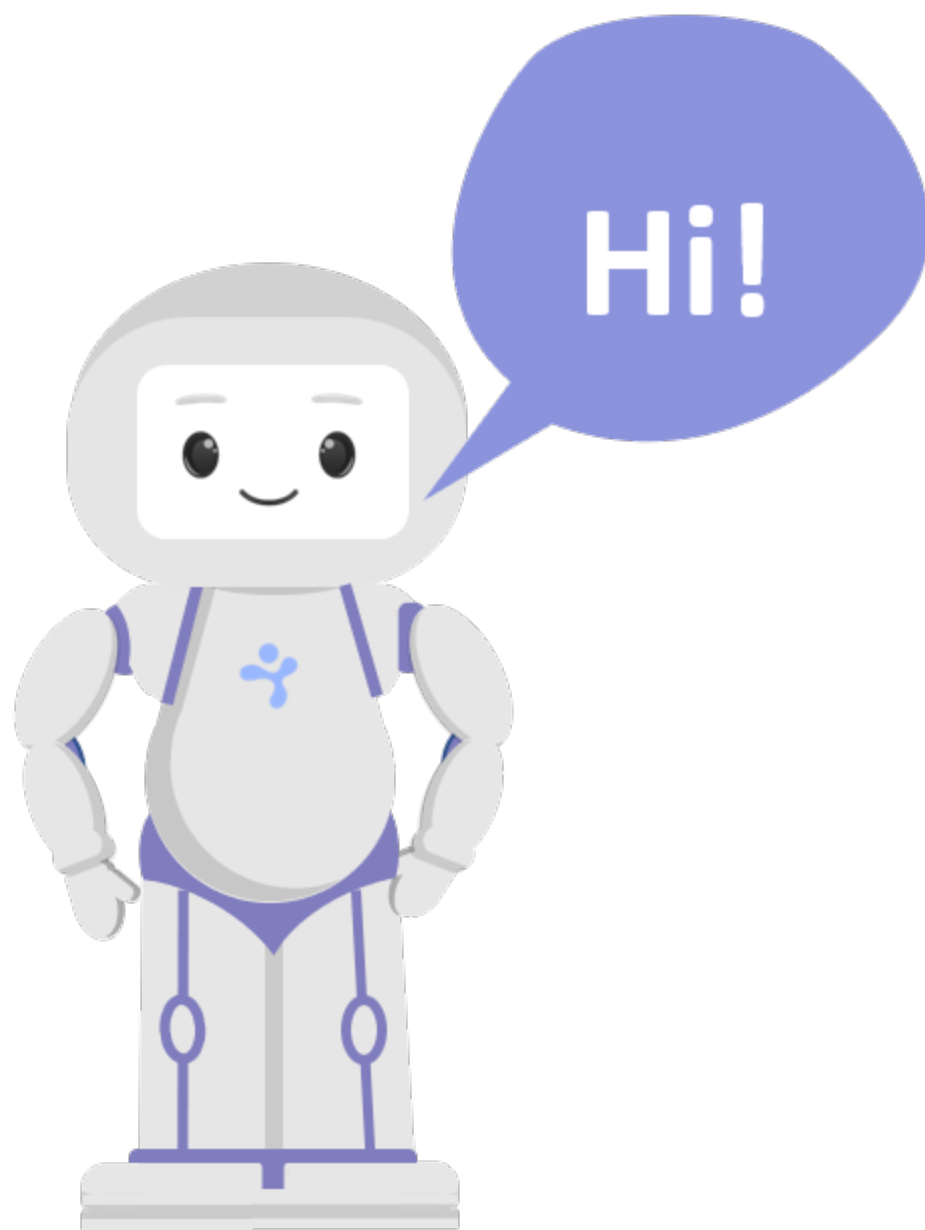
Correct or
wrong

**My teacher is talking to a parent.
Do I say hi?**



Yes or No

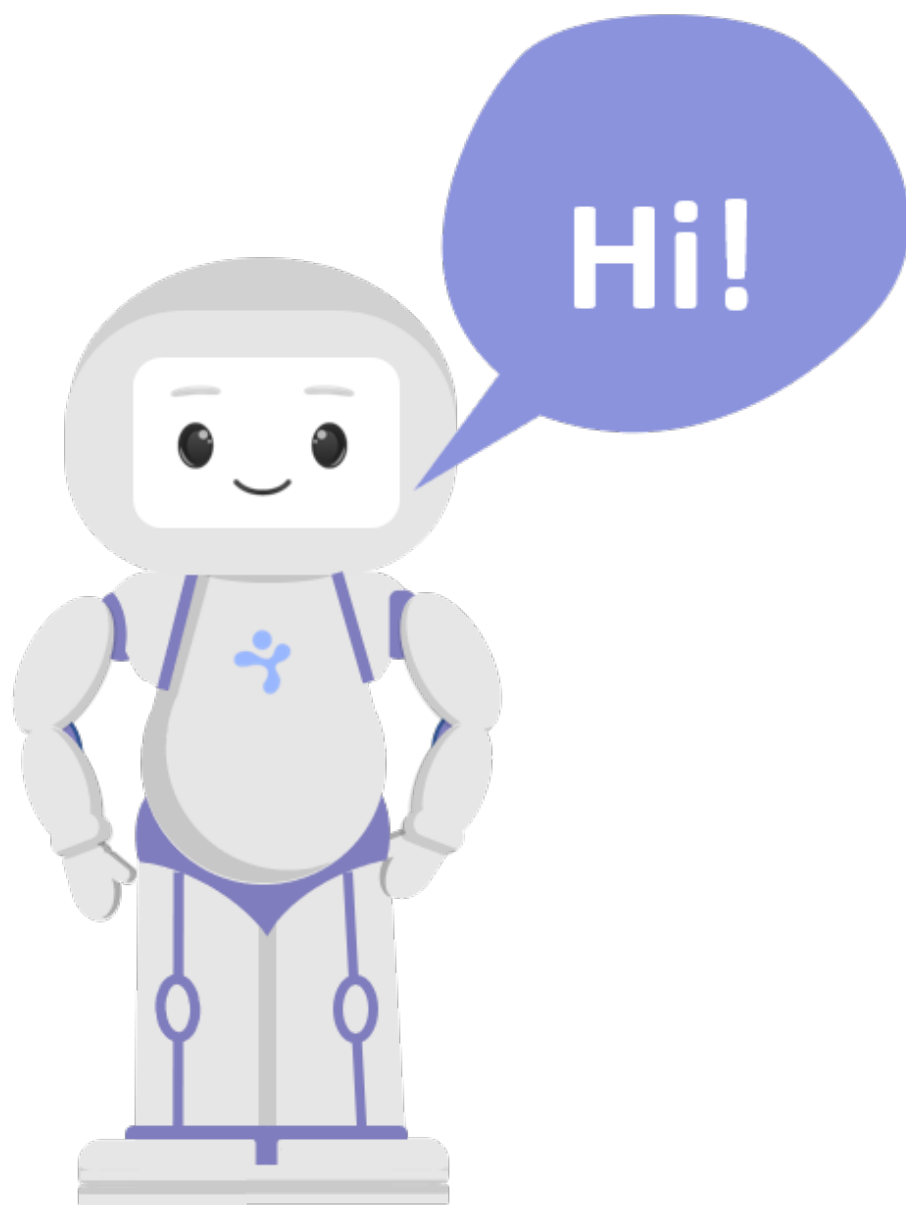
**My father is on the phone.
Do I say hi?**



Yes or No

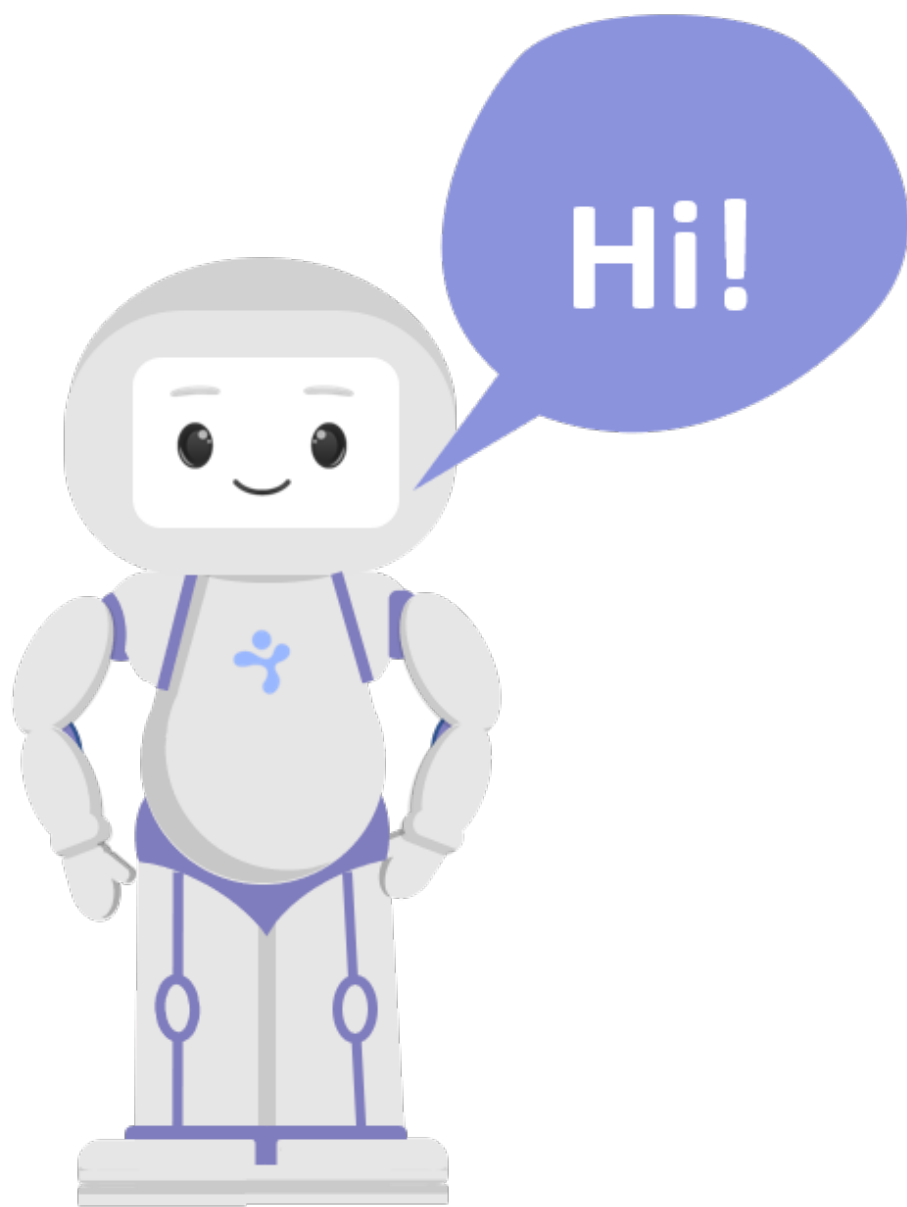
**My teacher enters the classroom and
says hi to everyone.**

Do I say hi?



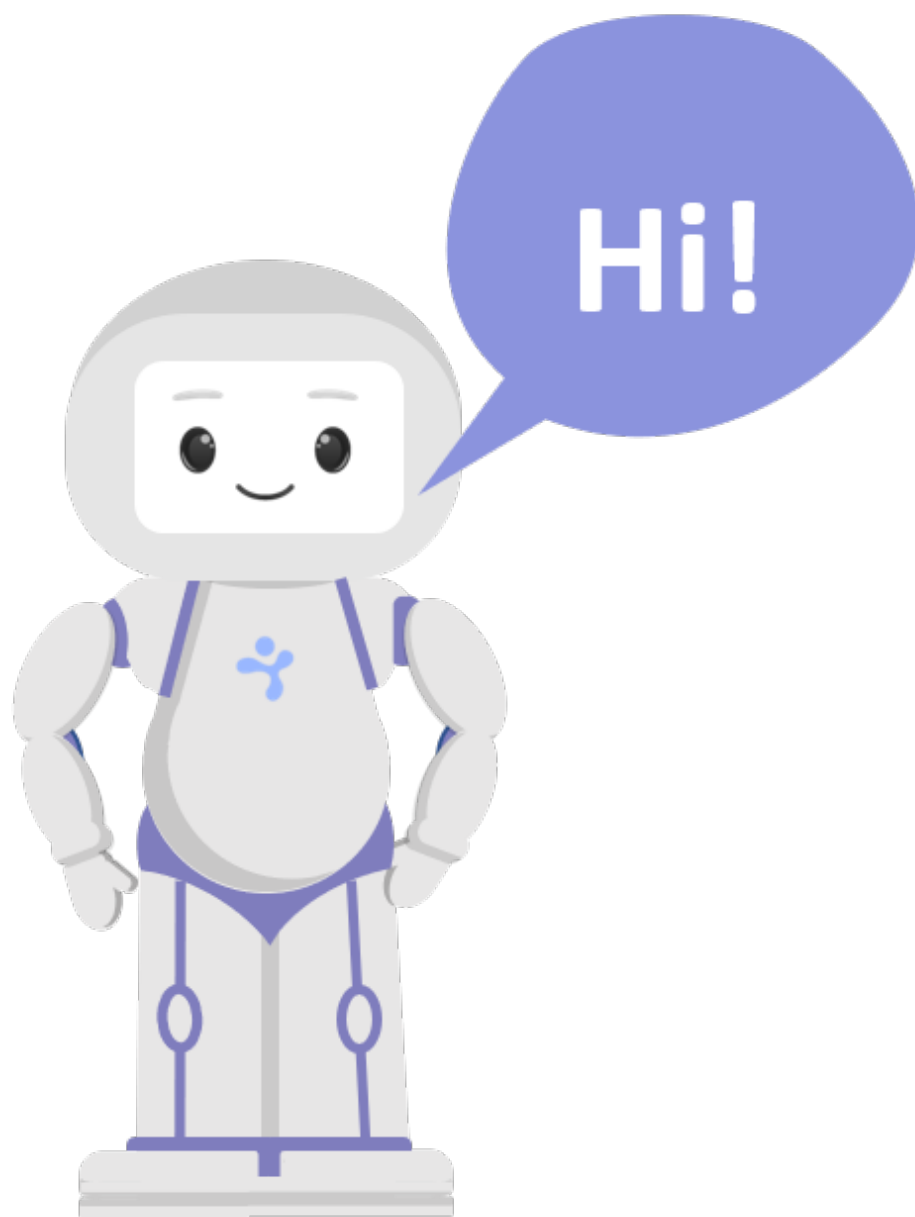
Yes or No

I see my friend for the first time in the
day.
Do I say hi?



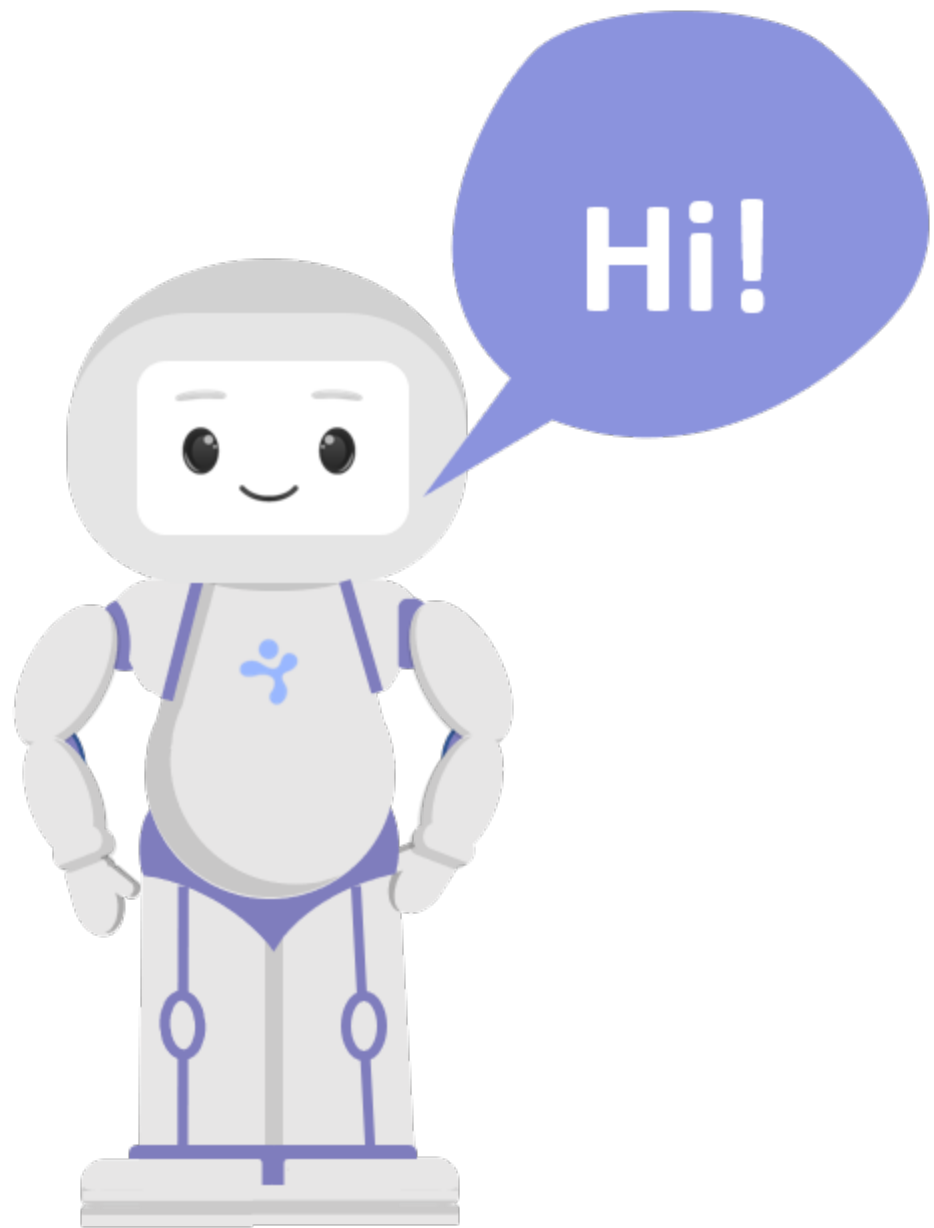
Yes or No

I see my friend for the second time in
a day.
Do I say hi?



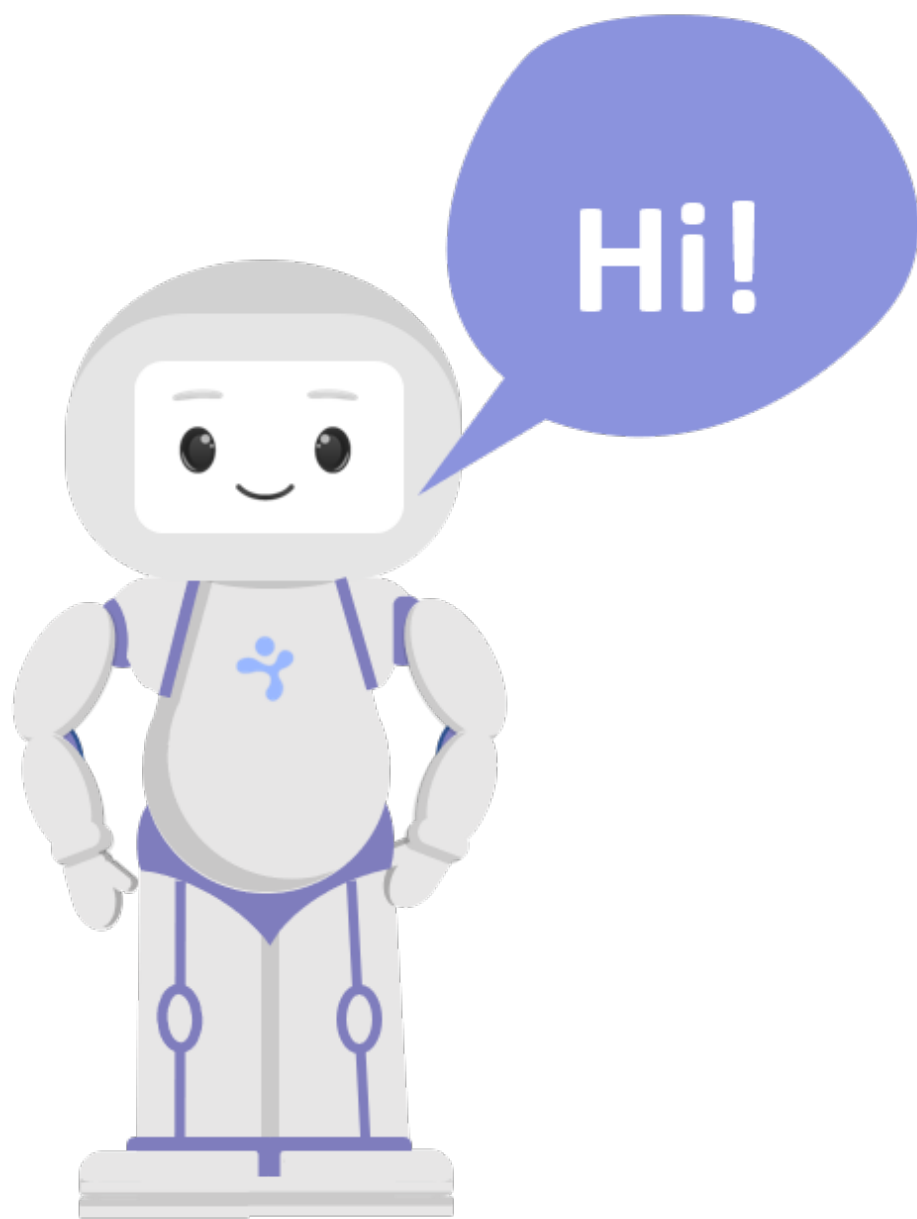
Yes or No

I see the bus driver for the first time
in the day.
Do I say hi?



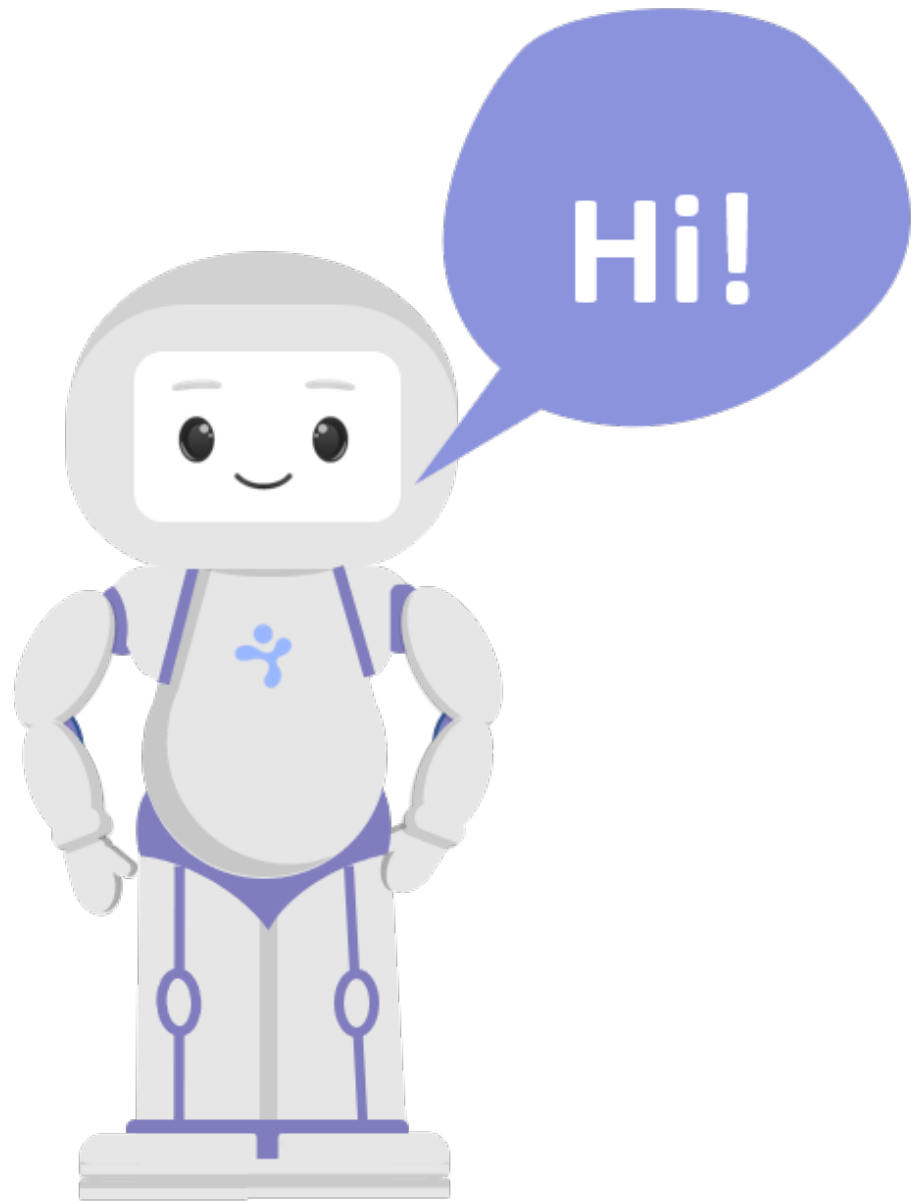
Yes or No

I enter a shop. I see the shop keeper.
Do I say hi?



Yes or No

I go back home from the school. I see
my mom.
Do I say hi?



Yes or No





Correct



Correct



Correct



Wrong



Correct



Wrong