

Guide to: Connect External HACCP probe (P4)

Compiled by: Aki Ainetdin

Date: 12.11.2020

This guide is for units that has factory pre-installed P4 external HACCP probe. Probe is Class A PT-100 (DIN EN 60751). Probe is installed on the front side of the kettle, next to the food temperature probe (P2), see image 1.

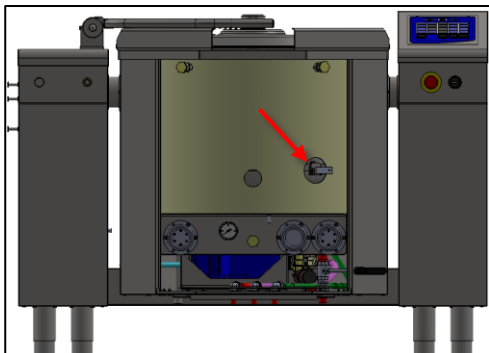


Image 1

Connection points for external HACCP probe P4 is inside the electrical box, see image 2. Connect your wires to terminals 5 and 6. Note, we recommend to use secured (shielded) cable.

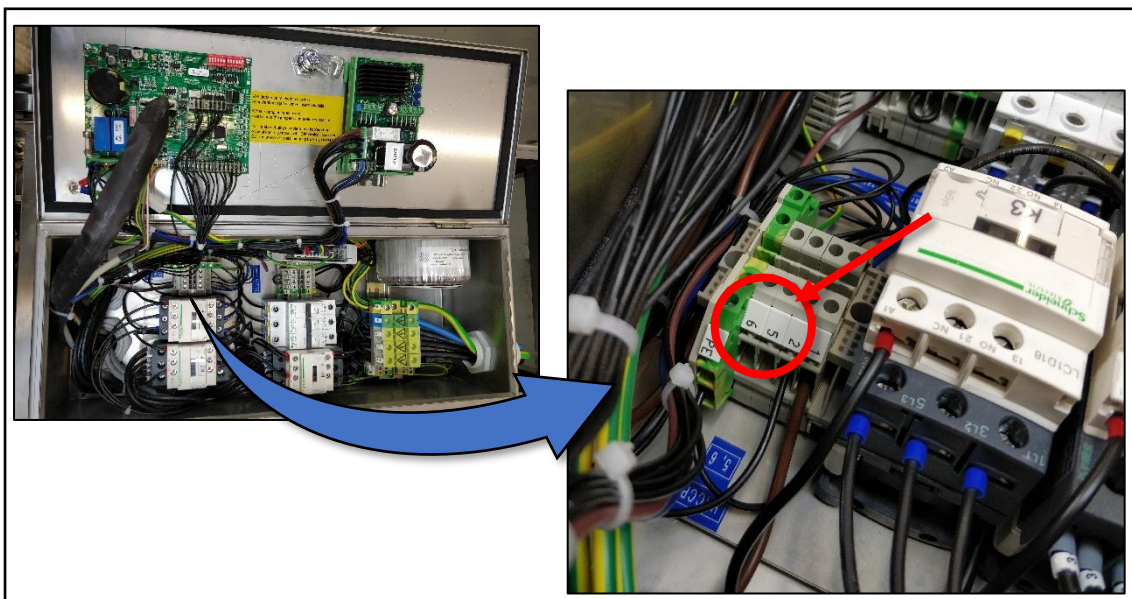


Image 2

