

Guide to: Remove mixer drive shaft by using shaft pusher tool

Compiled by: Aki Ainettin

Date: 20.01.2020 (updated)

Description: Pusher tool can be used for removing mixer drive shaft if bearing, sealing or mixer motor needs to be replaced.

There are two sizes of tools available:

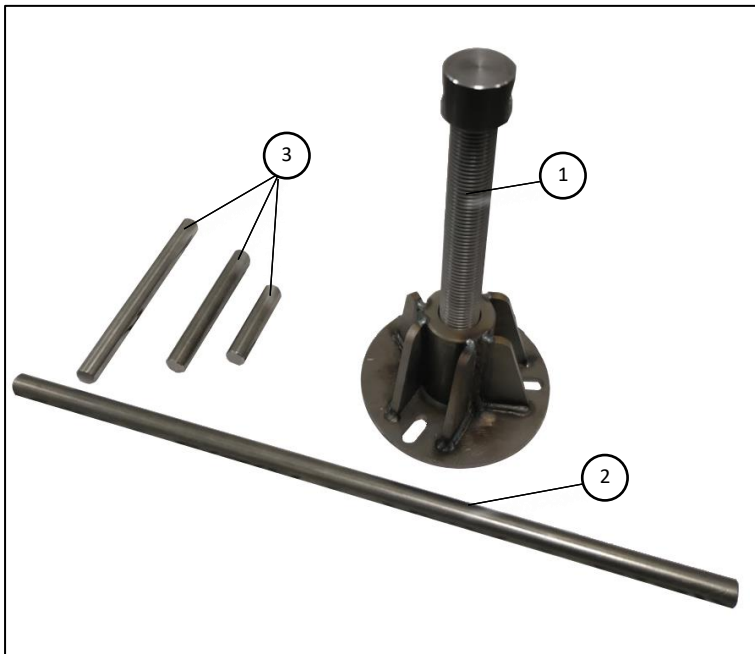


- 54992 for 40-100n



- 54991 fo 100-470L

Tools is delivered with following parts:

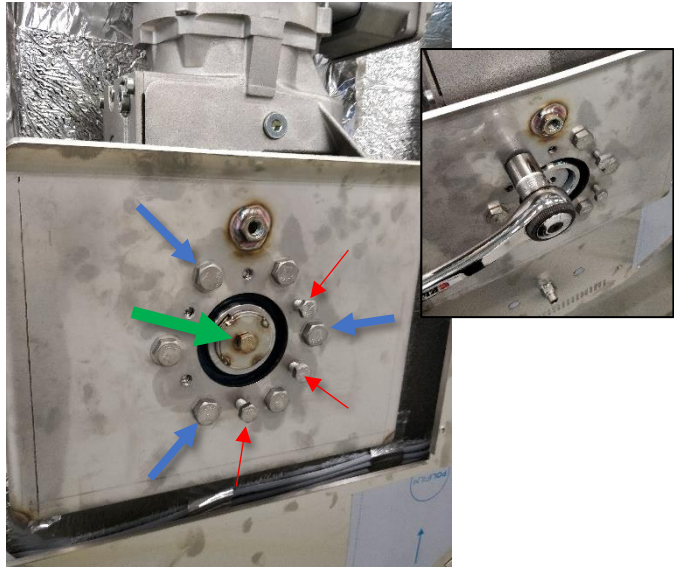


1	Pusher tool
2	Torsion bar
3	Pushrods

Preparation: Tilt the kettle and open remove bottom cover

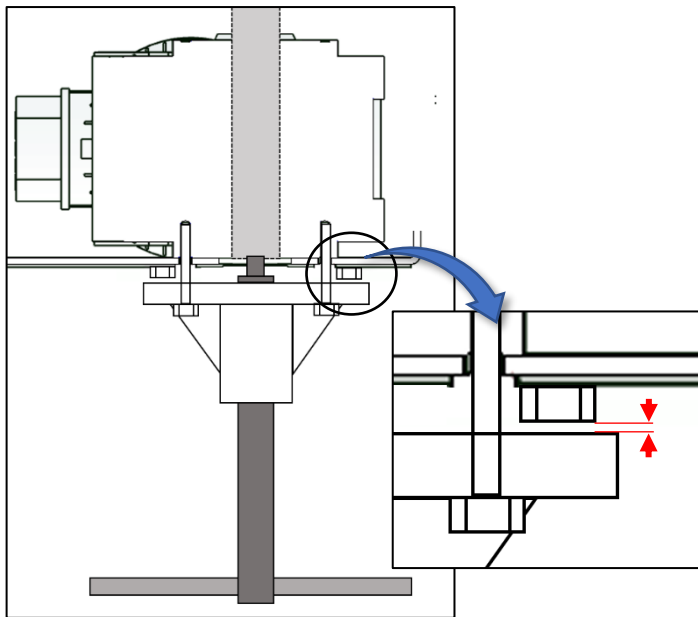
1. Remove **only three** 10 mm bolts (blue arrows) for attaching the tool. Do not open the 8 mm alignment bolts (red arrows)
2. Remove shaft holder bolt (green arrow)

Note! That shaft holder bolt is glued with thread locking glue.

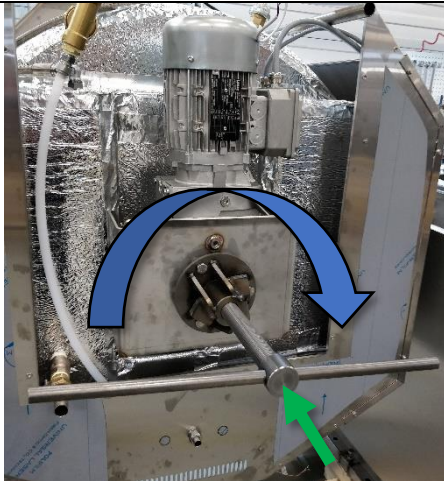


3. Install the pusher tool with three 10 mm bolt.

Note! Do not tighten the tool directly against the motor bed. Leave a small gap between pusher tool and the motor bed as shown on the image.



4. Start to push mixer shaft by rotating the torsion bar clockwise until the mixer shaft will come off. If mixer shaft is stuck, it can be helped by hitting the tool end (green arrow) with a sharp hit and rotate it at the same time.



5. Remove the mixer shaft by pulling it away from the kettle.

