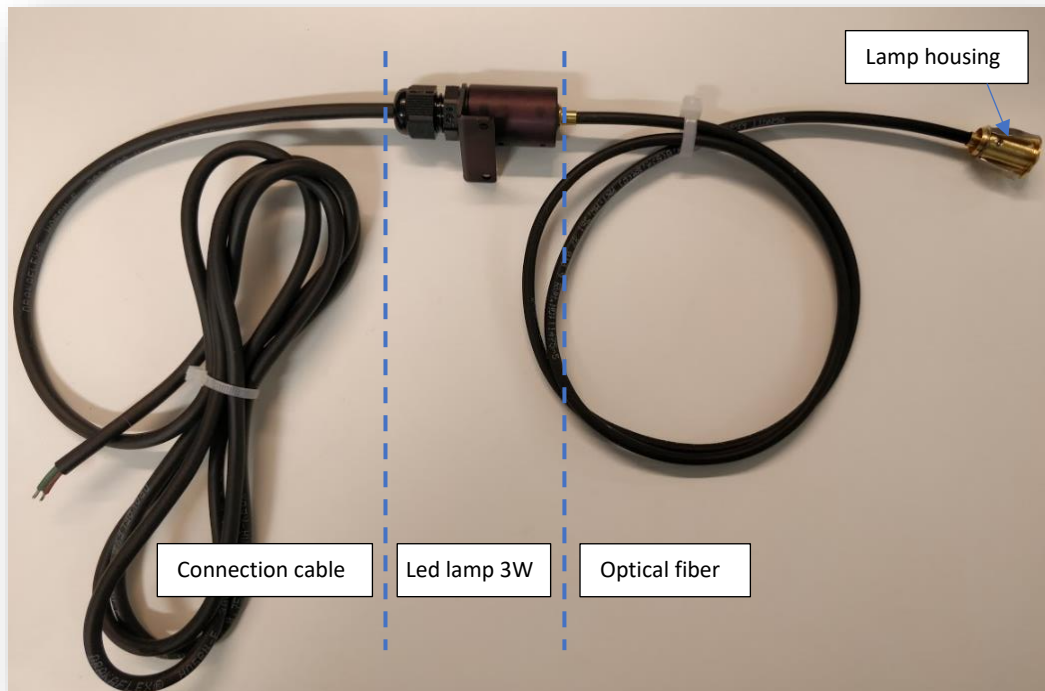


Guide to: Replacing Nozzle light LED-assy. (Led lamp with optical fiber cable)

Compiled by: Aki Ainetdin

Date: 27.5.2019



Repreparation: Power down the unit and remove the kettle back cover.

Tools: Normal hand tools.

Quick guide:

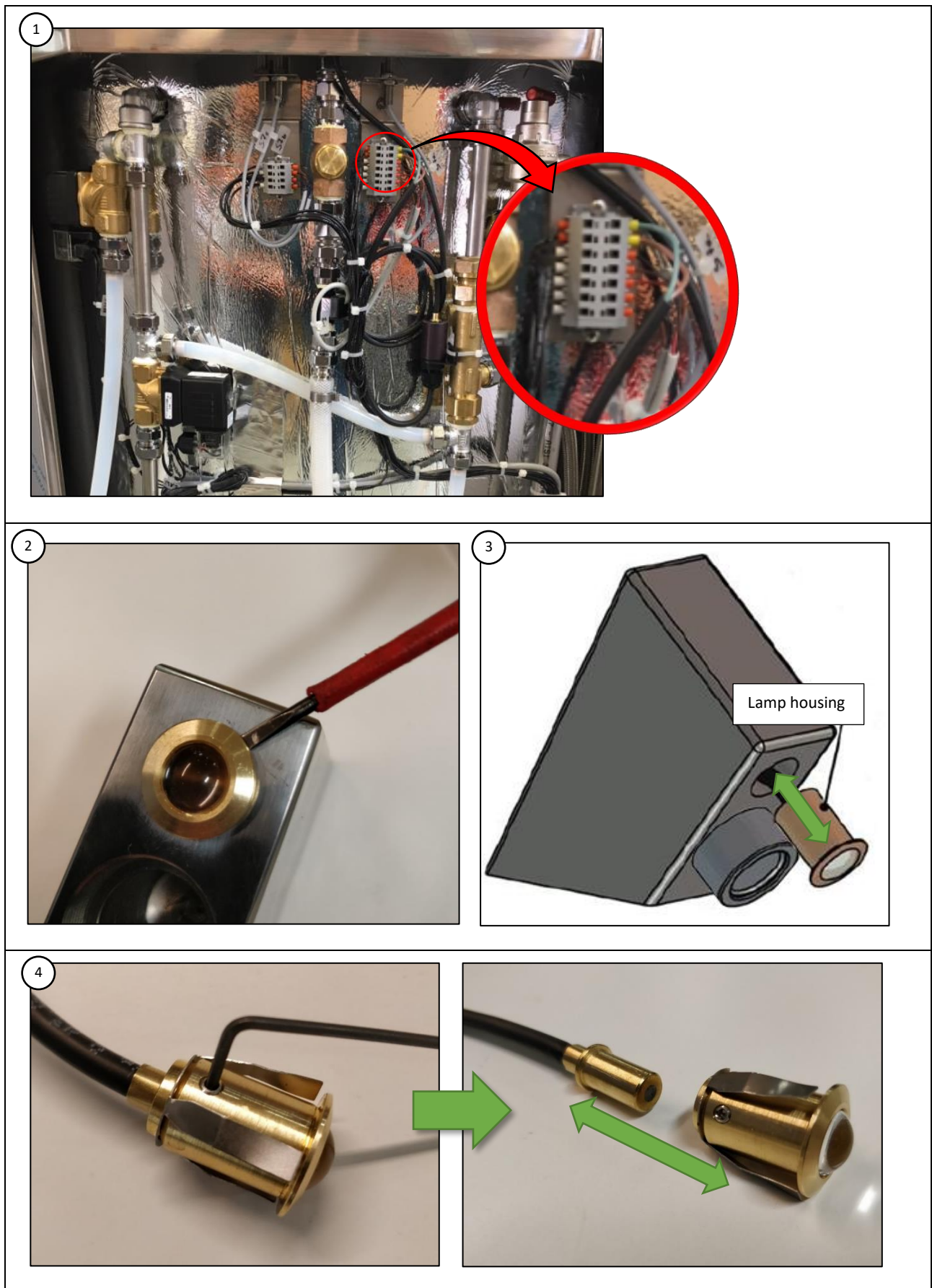
1. Disconnect led connection cables form terminals located back side of the kettle (Image 1)
2. Pull out gently the lamp housing from the nozzle by using tiny screwdriver or knife etc. (Image 2)
3. Pull out the lamp housing completely (image 3).
4. Loose the holder screw with hex key (1,5mm) and detach the lamp housing from the optical fiber (Image 4)
5. Remove the optical fiber cable by pulling it out from the back side of the kettle and guiding it same time from the nozzle side.
6. Cut cable ties so that led lamp and cables can be removed completely.
7. Install new light by pushing the optical fiber cable inside the nozzle from the back side until it stops. Use a "lasso" made for example cable tie to lift and guide the optical cable through the corner (Image 5).
8. Pull out optical fiber cable end and install new lamp housing and fasten the holder screw (Image 6).
9. Push the lamp housing to its place (guide the optical cable from the back side for easier installation).
10. Fasten the led unit, connect the wires and fasten cables with cable ties



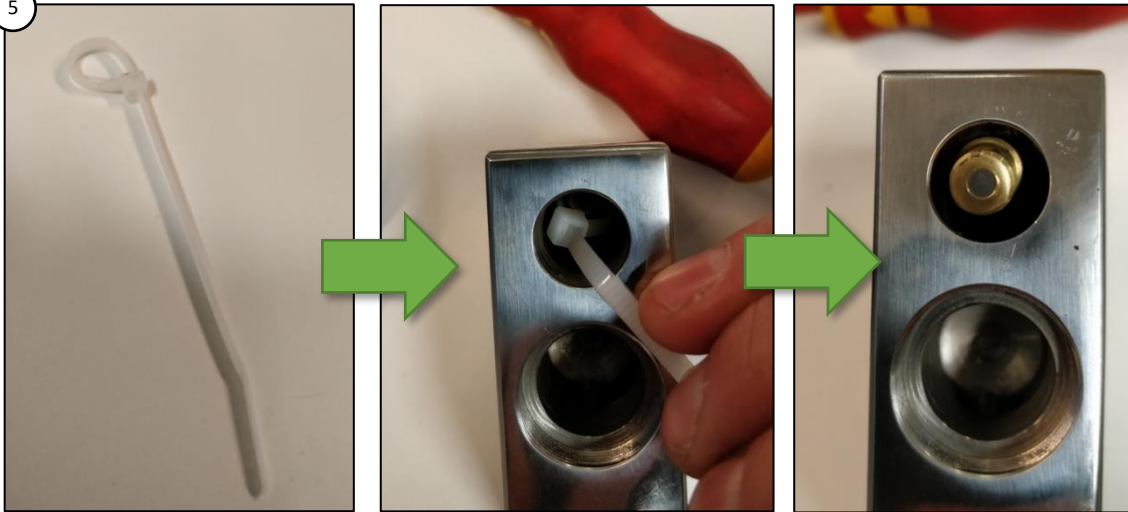
⚠ NOTICE

Do not cut or overbend the optical fiber.

Check connection before reconnecting power back to the unit (Check +/- are correct).



5



6

