

*For Immediate Release*

## Arts Commons Presents: RBC Emerging Visual Artist Program exhibition has virtual unveiling

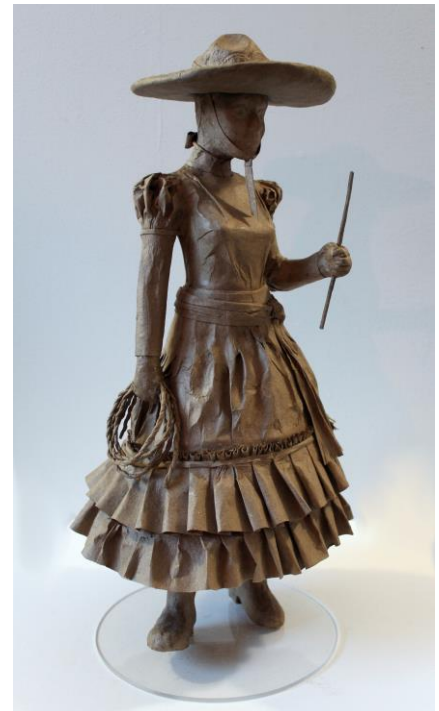
**CALGARY** – Energizing the gallery spaces at Arts Commons, RBC Emerging Visual Artists unveil their spring exhibitions - in the virtual landscape. Using immersive 3D imaging technology, Arts Commons shares the work of 28 artists featured in the Lightbox Studio, and +15 and Window Galleries - free to view from **now through to July 15, 2021 at [artscommons.ca](https://artscommons.ca)**.

The RBC Emerging Visual Artists Program provides key mentoring, exhibition, and networking opportunities for artists looking to establish their careers in the Calgary arts community.

[\*Almas de la Tierra / Souls of the Land\*](#) in the +15 Galleries is presented by SpanicArts, an organization that supports Hispanic artists and artists that are inspired by the Hispanic culture to express their creativity with passion as well as contribute to the artistic growth of the city and their own communities. Working through the mediums of painting, sculpture, photography, and fibre art, *Almas de la Tierra* showcases the work of 22 artists inspired by the common theme of Hispanic culture.

[\*STRESS IS A MONSTER THAT EATS ME ALIVE\*](#) in the Lightbox Gallery is the work of multi-disciplinary artist Darryl Sinclair. Using both pen and pencil as well as fabric art, Darryl focuses closely on mental illness and navigating her own relationship with herself. Darryl's hugely imaginative creations evoke a child-like whimsy that help to create a space for self-discovery and exploration.

[\*Works Created in Isolation, Where the Forest is Thickest \(& Portrait after Four Seasons\), UnBelonging in my Fatherland, and Soul of the Rockies\*](#) are four exhibitions featured in the Window Galleries by artists Amy Webber, Christopher Savage, Nabila Walji, and Nicole Kurceba in the mediums of paint and photography. Their work explores personal relationships to our natural surroundings, cultural roots, and the people around us.



*"Even though our emotions may not always feel beautiful - they can be painful, overwhelming, and complex - I believe there is beauty in the fact that as humans, we can feel such a wide range and depth of emotion,"* says Amy Webber, whose exhibition *Works Created in Isolation* is featured in the Window Galleries.

**This virtual exhibition is free to the public. Visit [artscommons.ca](https://artscommons.ca) to learn more.**

-##-

# MEDIA RELEASE



For media inquiries, high resolution images, or more information contact:  
Alex Bonyun, Communications Manager  
403-294-7429 [abonyun@artscommons.ca](mailto:abonyun@artscommons.ca)

**RBC EMERGING VISUAL  
ARTISTS PROGRAM**

FOUNDATION PARTNER



Foundation