

Q-Specials

3rd Quarter 2021

Weidmuller Ltd.
10 Spy Court
Markham, ON L3R 5H6



Weidmuller Canada Infoline: 1-800-268-4080
Weidmuller Canada Fax: 1-905-475-2798
support@weidmuller.ca ISO 9001:2015 Registered

QUOTATION #Q3-2021

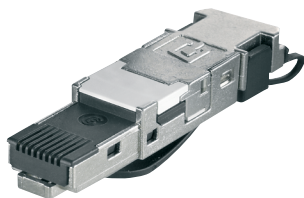
This number must appear on purchase order to receive special prices.

Valid from July 1 to September 30, 2021

Weidmüller

Tool-less RJ45 Gigabit Connector

Special Price of \$19.50



RJ45 plug-in connector (tool-less) according to IEC 60603-7-51 for wire outer diameters up to 1.6 mm

- Reliable and long-lasting for industrial applications thanks to use of die-cast zinc
- Cat. 6_A 10Gbit/s System Class E_A
- Suitable for 22-24 AWG solid wires
- Operating temperature of -40°C to 70°C
- cULus Listed (E316369)

Catalog #	Description	Regular Price	Special Price
1963600000	IE-PS-RJ45-FH-BK	\$30.18 ea.	\$19.50 ea.

Ethernet and USB Rail Mountable Couplers

Special Price from \$21.00



- 8946920000: RJ45, 8 wire, CAT 6a coupler for TS35 mounting, straight
- 8946960000: USB type AF to type AF coupler for TS35 mounting, straight
- 1438180000: USB type AF to type BF (printer) coupler for TS35 mounting, straight

Catalog #	Description	Regular Price	Special Price
8946920000	IE-T0-RJ45-C	\$42.23 ea.	\$29.00 ea.
8946960000	IE-T0-USB	\$32.86 ea.	\$25.00 ea.
1438180000	IE-T0-USB-AB	\$26.99 ea.	\$21.00 ea.

Q-Specials



FrontCom Micro IP65 Panel Interfaces

Special Price from \$19.00

Rated IP65 when closed, Weidmüller's FrontCom Micro is your best choice when you need a connection at the control panel, electrical cabinet or distribution board. All housings are made from robust black PA material; UL 94V-0 rated. All rated 750 plugging cycles according to IEC 60603-7.

- 1018790000: RJ45 Coupler rated Cat. 6A
- 1018840000: USB-A to USB-A Coupler


Catalog #	Description	Regular Price	Special Price
1018790000	IE-FCM-RJ45-C	\$29.05 ea.	\$25.00 ea.
1018840000	IE-FCM-USB-A	\$25.75 ea.	\$19.00 ea.

PROinsta Power Supplies

Special Price from \$22.00

Our PROinsta switch-mode power supply units feature a compact design, high efficiency and are extremely easy to maintain. Thanks to temperature protection, short-circuit and overload resistance they can be universally used in all applications.

- Wide power spectrum and compact design
- International approvals including CE, cCSAus, Hazardous area approvals, Class 2
- Temperature ranges from -25°C to +70°C
- Wide voltage input range



Catalog #	Description	Regular Price	Special Price
2580180000	PRO INSTA 16W 24V 0.7A	\$29.80 ea.	\$22.00 ea.
2580190000	PRO INSTA 30W 24V 1.3A	\$43.40 ea.	\$32.50 ea.
2580230000	PRO INSTA 60W 24V 2.5A	\$56.60 ea.	\$42.75 ea.
2580250000	PRO INSTA 90W 24V 3.8A	\$69.80 ea.	\$52.00 ea.

WIL Standard LED Light

Special Price from \$150.00

WIL STANDARD is a new IP67 LED light by Weidmüller

- The LED light incorporates three rows of LEDs (3 x 14 LEDs)
- Arranged in a trapezium shape at 20-degree angles; allowing for an ultra-wide beam angle and a broad illuminated area
- Flush direct mount or magnet mount at just 8mm high
- cULus Listed
- Also available with a magnetic strip



Catalog #	Description	Regular Price	Special Price
2527960000	WIL-STANDARD-cable end open	\$179.37 ea.	\$150.00 ea.
2436210000	WIL-STANDARD (with M12 connector)	\$194.05 ea.	\$150.00 ea.


Cable Sheath Strippers

Special Price from \$45.00

The AM 25 and AM 35 are perfect for stripping the outer cable jacketing.

- AM 25: Ø 6-25mm; AM 35: Ø 25-36mm
- With the pivoting blade and the metal retaining clip, your round, longitudinal or spiral cuts work every time.

The AM 16 has an improved cutting depth setting, even processing of different insulation thicknesses with extremely thin-walled cable sheathing is no problem. The practical readout helps to fine set the blade depth.



Catalog #	Description	Regular Price	Special Price
9001540000	AM-25	\$68.25 ea.	\$45.00 ea.
9001080000	AM-35	\$83.06 ea.	\$60.00 ea.
9204190000	AM-16	\$103.32 ea.	\$52.00 ea.

CONDITIONS: Prices valid from July 1st to September 30th, 2021. Orders must be received by Weidmüller by this date. Orders must be sent to an authorized Weidmüller distributor. Orders must reference quotation number Q3-2021. Please note that all prices (Regular Price and Special Price) are suggested prices in CAD valid for Canada only. Image is for illustrative purposes only, please refer to product description. We reserve the right to make technical changes.

Fast and efficient marking

Consistent labelling with SlimFix MultiMark

WORKPLACE
SOLUTIONS

Let's Connect.

Marking processes should be characterised by efficiency, safety, and flexibility in order to achieve maximum benefit at low overall costs.

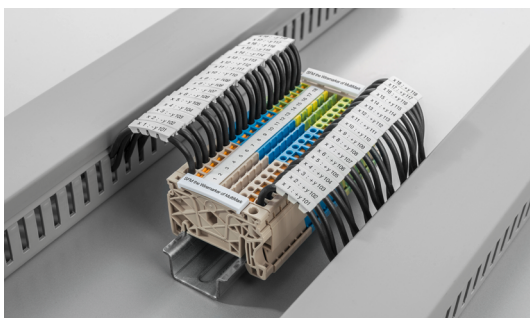
With the comprehensive MultiMark product family, you can achieve optimally structured and sustainable marking in every control cabinet. An example of this is our new SlimFix wire marker, which can be printed and snapped on particularly quickly. At the same time, they meet the highest requirements for vibration and shock resistance. The wire markers have an open design and can be easily and quickly installed before or after the wiring process.

Your advantages at a glance:

- Best material properties and clear print image
- In order to reduce set-up time at the printer for high print volumes, we offer particularly large rolls with a high number of markers
- The clever composite material ensures perfect handling
- Temp.: - 50°C to + 90°C
- Material: TPU, PC-ABS halogen free; UL-94 flammability: V2




New!




- Support the bending radius of the wire allowing cable ducts to be placed closer to the terminal rail.
- Wire markers are visible at a glance as they are designed slim and always in the pitch of the component
- The solid plastic foot contour ensures reliable locking
- Installation is possible after wiring
- Increased flexibility with systemized solution: M-Print PRO software interfaces to CAE or Excel

SFM 2

Order No.	Type	Pieces per Roll	Platten Roller	Marker length
2719120000	SFM 2/12 1.8-2.5 MM GE	1400		12mm
2719090000	SFM 2/12 1.8-2.5 MM WS	1400		
2719130000	SFM 2/18 1.8-2.5 MM GE	900		18mm
2719100000	SFM 2/18 1.8-2.5 MM WS	900		
2719140000	SFM 2/24 1.8-2.5 MM GE	700		24mm
2719110000	SFM 2/24 1.8-2.5 MM WS	700		

SFM 3

Order No.	Type	Pieces per Roll	Platten Roller	Ribbon
2719150000	SFM 3/12 2.5-3.3 MM WS	1400		2005090000
2719180000	SFM 3/12 2.5-3.3 MM GE	1400		
2719160000	SFM 3/18 2.5-3.3 MM WS	1200		
2719190000	SFM 3/18 2.5-3.3 MM GE	1200		
2719170000	SFM 3/24 2.5-3.3 MM WS	900		
2719200000	SFM 3/24 2.5-3.3 MM GE	900		



Weidmüller 

Master your challenges without compromise

Klippon® Connect – Application-optimized solutions

Our answer to your panel building challenges

Panel builders have to master various tasks depending on the application. However varied the challenges may be, our answer is incredibly simple: Klippon® Connect combines all the requirements placed on the relevant industries now and in the future of Industry 4.0 production plants. The wide range of tailor-made applications and universal terminal blocks in combination with our future-proof connection technologies offer the right answer to your cabinet building challenges



www.weidmuller.ca